

FLOS

FA54000230 Black

Kirk 2 NEW

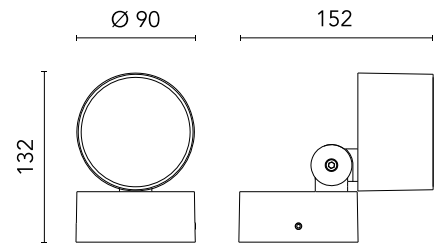
Designed by FLOS Outdoor



LED source included. LED module configured to work directly on the mains 220-230V ON/OFF. Fixing bracket included. IP68 connector for 6mm\varnothing8mm rubber cable. To ensure the tightness of the cable guide it's recommended to use flexible electric cables suitable for exterior use. Ground spike to be ordered separately.

Are you a professional and your project needs consulting and support?

[BOOK AN APPOINTMENT](#)



Main specifications

| | |
|------------------|-----------------------|
| Mounting | Ceiling, Wall, Ground |
| Environment | Outdoor wet location |
| LED type | LED array |
| Number of heads | 1 |
| Power (W) | 10 |
| System power (W) | 12 |
| Source flux (lm) | 951 |
| System flux (lm) | 713 |

Physical

| | |
|--------------------------|------------|
| Colour | Black |
| Orientation | Adjustable |
| Longitudinal tilting (°) | 135 |
| IP internal | 65 |

Download

Mounting instructions [↓ ZIP](#)

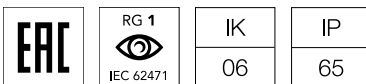
Photometric Files

LDT / IES [↓ ZIP](#)

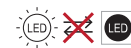
Technical Drawings

2D [↓ ZIP](#)

3D [↓ ZIP](#)

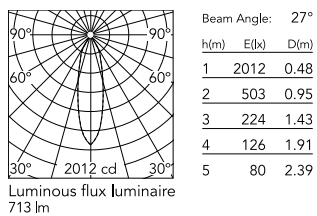


Ecodesign and Energy Labelling



Non-replaceable light source

Schematic light drawing



Photometric

| | |
|------------------------|-----------|
| Lighting type | Direct |
| Light distribution | Symmetric |
| CCT (K) | 3000 |
| CRI> | 80 |
| Beam angle C0-180 (°) | 30 |
| Beam angle C90-270 (°) | 30 |

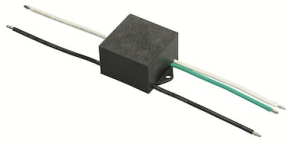
Electrical

| | |
|--------------------|--------------|
| Insulation class | I |
| Frequency (Hz) | 50-60 |
| Main voltage (Vac) | 220-230 |
| Dimmable | No |
| Dimming type | Non Dimmable |
| Emergency type | No |

Notes

Please check with your referent person in our Front Office if a code modification is needed to meet the required certification compliance

Accessories & Power Supply



OPTIONAL
Accessory

F990E00A000

S.P.D. (SURGE PROTECTION
DEVICE)



OPTIONAL
Accessory

FA266

Ground Spike Kirk 2