

FLOS

F3311030 Black

Kelvin Led Base

Designed by Antonio Citterio/assistant Toan Nguyen, 2009

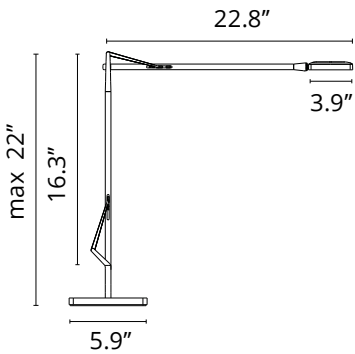
8W - 285lm - 3000K



Part of the popular Kelvin LED family, the Kelvin LED F floor lamp features the collection's signature square head and utilizes the latest technology to provide precise customization of output. The three-step on/off switch utilizes Soft Touch technology, and the base cover is injection-printed PC (polycarbonate). The head is directional, the counterweight is an iron cut painted through a process of cataphoresis. The base separates from the lamp body, held in place with a safety-locking pin. Inspiration behind the design: Inspired by a love of industrial design, creators Antonio Citterio and Toan Nguyen developed the Kelvin family to blend seemingly simple structures with the most innovative technologies and materials.

Are you a professional and your project needs consulting and support?

BOOK AN APPOINTMENT



Main specifications

Mounting	Table
Environments	Indoor dry location
Light Source Type	LED
Light sources included	Yes
LED type	LED Module
Power (W)	8
System flux (lm)	285

Physical

Color	Black
Length (in)	22.87
Cord color	Black
Cord length (in)	70.866
Net weight (lb)	8.6
Package volume (in)	1419.48
IP internal	20

Download

Mounting instructions	PDF
Mounting instructions	PDF
Mounting instructions	PDF

Photometric Files

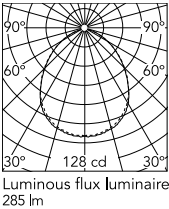
LDT / IES	LDT
-----------	-----

Technical Drawings

2D	ZIP
3D	ZIP



Schematic light drawing



Photometric




Lighting type	Direct
Light distribution	Symmetric
CCT (K)	3000
Extreme cut off	No

Electrical




Insulation class	III
Frequency (Hz)	50/60
Main voltage (Vac)	100-240
Driver	Remote included
Dimmable	Yes
Dimming type	Electronic 24V
Dimming interface	Dimmer Integrated
Plug type	Type G, Type A, Type C
Batteries inside	No

Ecodesign and Energy Labelling

This product contains a light source of energy efficiency class F



Replaceable (LED only) light source by a professional



Replaceable control gear by an end-user

Spare Parts

01.

Black plug assembly kit & 24V driver

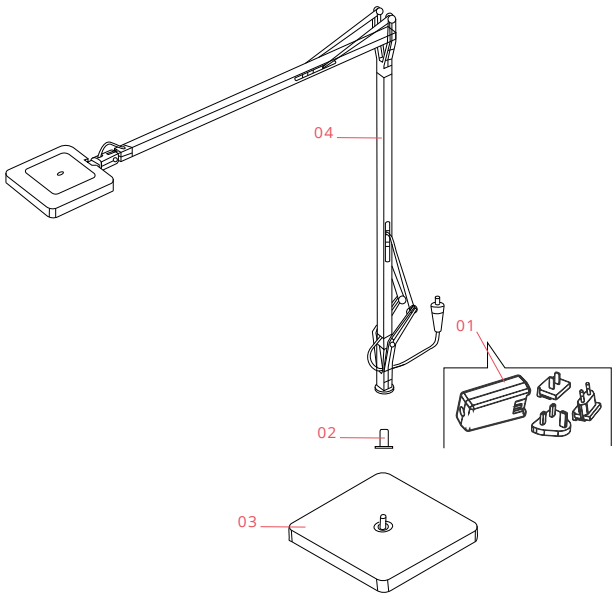
RF6600230
02.

Kelvin Led Black insert for lamp base

RF18764
03.

Kelvin led gm black base

F3322030A





RF6600230

Black plug assembly kit & 24V driver



RF18764

Kelvin Led Black insert for lamp base



F3322030A

Kelvin led gm black base