

## Kap 80 Square Fixed Optic Medium

Designed by FLOS Architectural, 2016



Recessed luminaire with LED light source. Power supply not included.

Are you a professional and your project needs consulting and support?

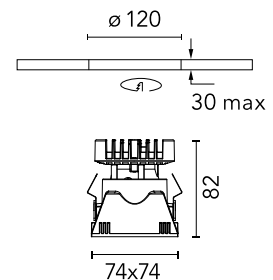
[BOOK AN APPOINTMENT](#)

### Main specifications

Mounting	Ceiling recessed
Environments	Indoor dry location
Light source type	LED
Light sources included	Yes
LED type	LED array
Lamp category	LED
Number of lamps	1
Power (W)	9.2
System power (W)	9.2
Source flux (lm)	957
Lumen Output (lm)	624
Efficacy (lm/W)	67

### Physical

Colour	Gold
Trim	No
Orientation	Fixed
Recessed depth (mm)	93
Spot diameter (mm)	74
Length (mm)	74
Net weight (kg)	0.24
Package height (mm)	90
Package width (mm)	140
Package length (mm)	105
IP internal	20
IP external	54



### Download

[Mounting instructions](#) [↓ PDF](#)

[Item information](#) [↓ JPG](#)

### Photometric Files

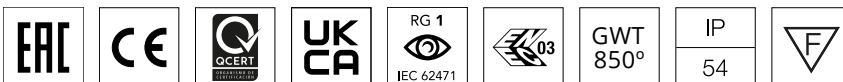
[LDT / IES](#) [↓ ZIP](#)

### Technical Drawings

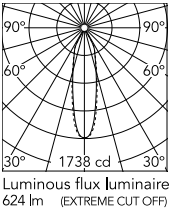
[2D](#) [↓ ZIP](#)

[3D](#) [↓ ZIP](#)

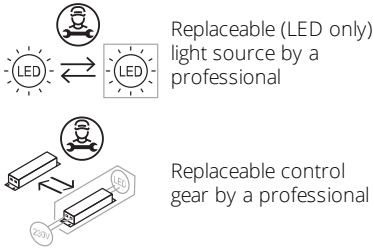
[Bim](#) [↓ ZIP](#)



## Schematic light drawing



## Ecodesign and Energy Labelling



## Photometric

Lighting type	Direct
Light distribution	Symmetric
CCT (K)	3000
CRI>	90
McAdam steps (SDCM)	3
LED Life / Failure Ratio	L80B50 > 50.000h (Tc=85°C)
Beam angle C0-180 (°)	25
Beam angle C90-270 (°)	25
UGR <sub>L</sub>	<16

## Electrical

Insulation class	III
Frequency (Hz)	0
Forward voltage (V)	17.8
LED current (mA)	500
Power supply	Remote excluded
Dimmable	Yes
Power supply type	Non Dimmable, Dimmable DALI 2, Dimmable 0-10V, Dimmable Casambi, Dimmable 1-10V, Dimmable DALI 1, Mains Cut Dimming

## Notes

Diffusing lens included.

Accessories & Power Supply



REQUIRED  
Power supply

Electrical

60.9188

Continuous current power supply of 13-20W, 110\*/240V - 50/60Hz with current selected through adjustable 200 mA - 13W / 300 mA - 15W / 350 mA - 18W / 400 / 450 / 500 / 550 / 600 / 650 / 700 / 750 / 800 / 850 / 900 mA - 20W. switch. 0/1-10V or push.



REQUIRED  
Power supply

Electrical

60.9768

Non dimmable continuous current power supply of 220/240V - 50/60Hz with power current selected through adjustable with DIP-switch 350 mA - 7,3W / 400mA - 8,4W / 450 mA - 9,4W / 500 mA - 10,5W

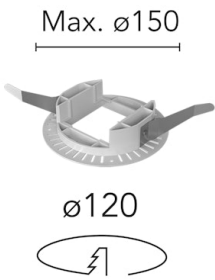


REQUIRED  
Power supply

Electrical

60.9826

Continuous current power supply of 12-20W, 110/240V - 50/60Hz with power current selected through DIP-switch 350mA - 15W / 500mA - 21W / 600mA - 26W / 700mA - 30W dimmable Dali 1, Dali 2 & PUSH



REQUIRED  
Frame

Installation

08.9103.00

Installation frame No Trim



REQUIRED  
Power supply

Electrical

60.9207

Casambi continuous current power supply, dimmable 220/240V - 50/60Hz, 300mA - 16W / 350mA - 18,5W / 400mA - 21,5W / 450 mA - 24W / 500mA - 27W / 600mA - 32W / 650 mA - 35W / 700 mA - 36W / 750 / 800 / 900 / 1000 / 1050 / 1200 mA - 38W.

