

# FLOS

05.7140.B1 White

## Kap Ø 105 Wall-Washer

Designed by FLOS Architectural, 2019



Recessed 12V LED lamp luminaire. Remote transformer not included.

Are you a professional and your project needs consulting and support?

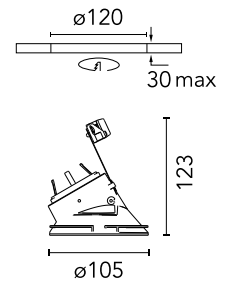
[BOOK AN APPOINTMENT](#)

### Main specifications

Mounting	Ceiling recessed
Environments	Indoor dry location
Light Source Type	Bulb
Lamp category	LED
Lamp type	QR-CBC 51
Lamp holders	GX5.3
Ilcos	No

### Physical

Colour	White
Trim	No
Orientation	Fixed
Recessed depth (mm)	130
Spot diameter (mm)	105
Net weight (kg)	0.21
Package height (mm)	190
Package width (mm)	175
Package length (mm)	220
IP internal	54
IP external	54



### Download

Mounting instructions [↓ PDF](#)

### Photometric Files

LDT / IES [↓ ZIP](#)

### Technical Drawings

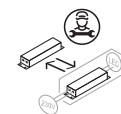
[Bim](#) [↓ ZIP](#)



### Ecodesign and Energy Labelling



Replaceable (LED only) light source by an end-user



Replaceable control gear by a professional

## Photometric

Lighting type	Direct
Light distribution	Asymmetric

## Electrical

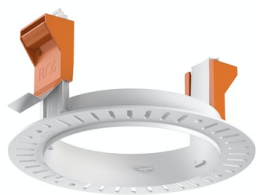
Insulation class	II
Frequency (Hz)	0
Main voltage (Vac)	12
Forward voltage (V)	12
LED current (mA)	-9
Driver	Remote excluded
Dimming type	Electronic 12V
Emergency type	No

## Notes

Not suitable for lens accessories.  
Pre-installation frame. To be ordered separately.

---

## Accessories & Power Supply



ø120



REQUIRED  
Frame

Installation

08.0132.00

Installation frame No Trim



REQUIRED  
Power supply

Electrical

60.9424

12V Electronic Transformer 35-105W



REQUIRED  
Power supply

Electrical

60.9398

12V Electronic Transformer 20-70W