

FLOS

05.7140.74 Black

Kap Ø 105 Wall-Washer

Designed by FLOS Architectural, 2019



Recessed 12V LED lamp luminaire. Remote transformer not included.

Are you a professional and your project needs consulting and support?

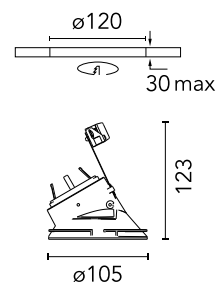
[BOOK AN APPOINTMENT](#)

Main specifications

| | |
|-------------------|---------------------|
| Mounting | Ceiling recessed |
| Environments | Indoor dry location |
| Light Source Type | Bulb |
| Lamp category | LED |
| Lamp type | QR-CBC 51 |
| Lamp holders | GX5.3 |
| Ilcos | No |

Physical

| | |
|---------------------|-------|
| Colour | Black |
| Trim | No |
| Orientation | Fixed |
| Recessed depth (mm) | 130 |
| Spot diameter (mm) | 105 |
| Net weight (kg) | 0.21 |
| Package height (mm) | 190 |
| Package width (mm) | 175 |
| Package length (mm) | 220 |
| IP internal | 54 |
| IP external | 54 |



Download

Mounting instructions [↓ PDF](#)

Photometric Files

LDT / IES [↓ ZIP](#)

Technical Drawings

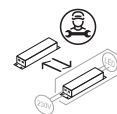
[Bim](#) [↓ ZIP](#)



Ecodesign and Energy Labelling



Replaceable (LED only) light source by an end-user



Replaceable control gear by a professional

Photometric

| | |
|--------------------|------------|
| Lighting type | Direct |
| Light distribution | Asymmetric |

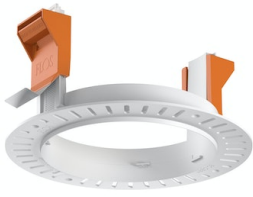
Electrical

| | |
|---------------------|-----------------|
| Insulation class | II |
| Frequency (Hz) | 0 |
| Main voltage (Vac) | 12 |
| Forward voltage (V) | 12 |
| LED current (mA) | -9 |
| Driver | Remote excluded |
| Dimming type | Electronic 12V |
| Emergency type | No |

Notes

Not suitable for lens accessories.
Pre-installation frame. To be ordered separately.

Accessories & Power Supply



ø120



REQUIRED
Frame

Installation

08.0132.00

Installation frame No Trim



REQUIRED
Power supply

Electrical

60.9424

12V Electronic Transformer 35-105W



REQUIRED
Power supply

Electrical

60.9398

12V Electronic Transformer 20-70W