

FLOS

05.7106.B1 White

Kap Ø 105 Fixed Optic Medium

Designed by FLOS Architectural, 2019

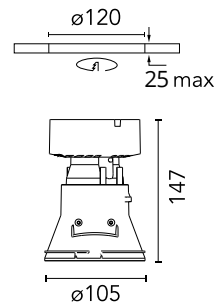
LED - LED array - 22.8W - 2222lm - 3000K - CRI> 90 - Beam° 27



Recessed luminaire with LED light source. Remote transformer not included. Pre-installation frame. To be ordered separately. Diffusing lens included.

Are you a professional and your project needs consulting and support?

[BOOK AN APPOINTMENT](#)



Main specifications

| | |
|-------------------|---------------------|
| Mounting | Ceiling recessed |
| Environments | Indoor dry location |
| Light Source Type | LED |
| LED type | LED array |
| Lamp category | LED |
| Iicos | No |
| Bulb finish | Clear |
| Number of heads | 1 |
| Power (W) | 22.8 |
| System power (W) | 25.9 |
| Source flux (lm) | 2767 |
| System flux (lm) | 2222 |
| Efficacy (lm/W) | 85 |

Physical

| | |
|---------------------|-------|
| Colour | White |
| Trim | No |
| Orientation | Fixed |
| Recessed depth (mm) | 150 |
| Spot diameter (mm) | 105 |
| Net weight (kg) | 0.48 |
| Package height (mm) | 190 |
| Package width (mm) | 175 |
| Package length (mm) | 220 |
| IP internal | 20 |
| IP external | 54 |

Download

Mounting instructions [↓ PDF](#)

Photometric Files

LDT / IES [↓ ZIP](#)

Technical Drawings

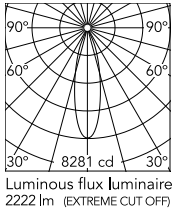
2D [↓ ZIP](#)

3D [↓ ZIP](#)

[🔒 Bim](#) [↓ ZIP](#)



Schematic light drawing



Beam Angle: 27°

| h(m) | E(lx) | D(m) |
|------|-------|------|
| 1 | 8281 | 0.48 |
| 2 | 2070 | 0.97 |
| 3 | 920 | 1.45 |
| 4 | 518 | 1.93 |
| 5 | 331 | 2.41 |

8281 cd

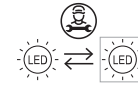
Photometric

| | |
|--------------------------|-----------|
| Lighting type | Direct |
| Light distribution | Symmetric |
| CCT (K) | 3000 |
| CRI> | 90 |
| McAdam steps (SDCM) | 3 |
| LED Life / Failure Ratio | L80B50 |
| Beam angle C0-180 (°) | 27 |
| Beam angle C90-270 (°) | 27 |
| UGR _L | 17 |

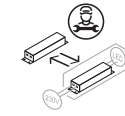
Electrical

| | |
|---------------------|--|
| Insulation class | III |
| Frequency (Hz) | 0 |
| Main voltage (Vac) | 34 |
| Forward voltage (V) | 34 |
| LED current (mA) | 650 |
| Driver | Remote excluded |
| Dimmable | Yes |
| Dimming type | Non Dimmable, Dimmable DALI 2, Dimmable Casambi, Dimmable 1-10V |
| Emergency type | No |

Ecodesign and Energy Labelling

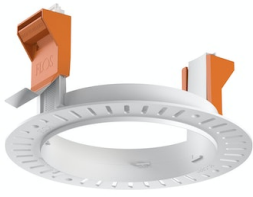


Replaceable (LED only)
light source by a
professional



Replaceable control
gear by a professional

Accessories & Power Supply



ø120



REQUIRED
Frame

Installation

08.0132.00

Installation frame No Trim



REQUIRED
Power supply

Electrical

60.9207

Continuous current power supply, dimmable Casambi, 220/240V - 50/60Hz, 300mA - 16W / 350mA - 18,5W / 400mA - 21,5W / 450 mA - 24W / 500mA - 27W / 600mA - 32W / 650 mA - 35W / 700 mA - 36W /750 /800 /900 /1000 /1050 /1200 mA - 38W.



REQUIRED
Power supply

Electrical

60.9439

Continuous current power supply, 0/1-10V dimmable, 220/240V - 50/60Hz, 300mA- 16W / 350mA-18W / 400mA- 21W / 500mA-27W / 600mA- 32W / 650mA-35W /700 /750 /800 /900/ 950/ 1000 /1050mA- 36W



REQUIRED
Power supply

Electrical

60.9186

Continuous current supply source of 240V - 50/60Hz with dimmable Dali 2, push dimming. 300mA - 16W / 350mA - 18W / 400mA - 21W / 500mA - 27W / 600mA - 32W / 650 mA - 35W / 700 / 750 / 800 / 900 / 1000 / 1050 mA - 36W



REQUIRED
Power supply

Electrical

60.9592



REQUIRED
Power supply

Electrical

60.9692

30W, 220-240V - 50/60Hz
Constant current power supply, with dip-switch programmable power supply current.

Non dimmable continuous
current power supply. 15-30W,
220/240V -50/60Hz with power
current selected through
adjustable switch. 350mA - 15W /
400mA - 17W / 450mA - 19W /
500mA - 22W / 550mA - 24W /
600mA - 26W / 650mA - 28W /
700mA - 30W.