

# FLOS

05.7115.74 Black

## Kap Ø 105 Adjustable Optic Spot

Designed by FLOS Architectural, 2019

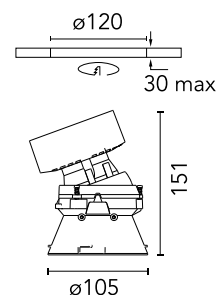
LED - LED array - 22.8W - 1930lm - 3000K - CRI> 90 - Beam° 16



Recessed luminaire with LED light source. Remote transformer not included. Pre-installation frame. To be ordered separately. Diffusing lens included.

Are you a professional and your project needs consulting and support?

[BOOK AN APPOINTMENT](#)



### Main specifications

Mounting	Ceiling recessed
Environments	Indoor dry location
Light Source Type	LED
LED type	LED array
Lamp category	LED
Ilcos	No
Bulb finish	Clear
Number of heads	1
Power (W)	22.8
System power (W)	25.9
Source flux (lm)	2767
System flux (lm)	1930
Efficacy (lm/W)	74

### Physical

Colour	Black
Trim	No
Orientation	Adjustable
Rotation (°)	360
Longitudinal tilting (°)	20
Transversal tilting (°)	20
Recessed depth (mm)	144
Spot diameter (mm)	105
Net weight (kg)	0.7
Package height (mm)	190
Package width (mm)	175
Package length (mm)	220
IP internal	20
IP external	54

### Download

[Mounting instructions](#)  PDF

### Photometric Files

[LDT / IES](#)  ZIP

### Technical Drawings

[2D](#)  ZIP

[3D](#)  ZIP

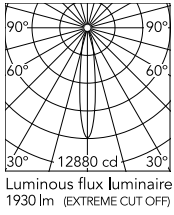
[Bim](#)  ZIP



<https://professional.flos.com/en/global/product/kap-105-adjustable-optic-spot-05.7115.74/>

05.7115.74

## Schematic light drawing



Beam Angle: 16°

h(m)	E(lx)	D(m)
1	12880	0.29
2	3220	0.57
3	1431	0.86
4	805	1.15
5	515	1.43

Luminous flux Luminaire  
1930 lm (EXTREME CUT OFF)

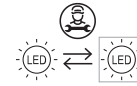
## Photometric

Lighting type	Direct
Light distribution	Symmetric
CCT (K)	3000
CRI>	90
McAdam steps (SDCM)	3
LED Life / Failure Ratio	L80B50
Beam angle C0-180 (°)	16
Beam angle C90-270 (°)	16
UGR <sub>L</sub>	1

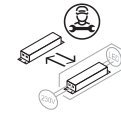
## Electrical

Insulation class	III
Frequency (Hz)	0
Main voltage (Vac)	34
Forward voltage (V)	34
LED current (mA)	650
Driver	Remote excluded
Dimmable	Yes
Dimming type	Non Dimmable, Dimmable DALI 2, Dimmable Casambi, Dimmable 1-10V
Emergency type	No

## Ecodesign and Energy Labelling

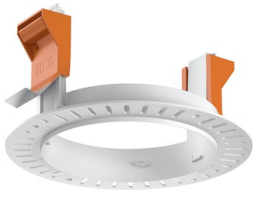


Replaceable (LED only)  
light source by a  
professional



Replaceable control  
gear by a professional

## Accessories & Power Supply



ø120



REQUIRED  
Frame

Installation

08.0132.00

Installation frame No Trim



REQUIRED  
Power supply

Electrical

60.9207

Continuous current power supply, dimmable Casambi, 220/240V - 50/60Hz, 300mA - 16W / 350mA - 18,5W / 400mA - 21,5W / 450 mA - 24W / 500mA - 27W / 600mA - 32W / 650 mA - 35W / 700 mA - 36W /750 /800 /900 /1000 /1050 /1200 mA - 38W.



REQUIRED  
Power supply

Electrical

60.9439

Continuous current power supply, 0/1-10V dimmable, 220/240V - 50/60Hz, 300mA- 16W / 350mA-18W / 400mA- 21W / 500mA-27W / 600mA- 32W / 650mA-35W /700 /750 /800 /900/ 950/ 1000 /1050mA- 36W



REQUIRED  
Power supply

Electrical

60.9186

Continuous current supply source of 240V - 50/60Hz with dimmable Dali 2, push dimming. 300mA - 16W / 350mA - 18W / 400mA - 21W / 500mA - 27W / 600mA - 32W / 650 mA - 35W / 700 / 750 / 800 / 900 / 1000 / 1050 mA - 36W



REQUIRED  
Power supply

Electrical

60.9592



REQUIRED  
Power supply

Electrical

60.9692

30W, 220-240V - 50/60Hz  
Constant current power supply, with dip-switch programmable power supply current.

Non dimmable continuous  
current power supply. 15-30W,  
220/240V -50/60Hz with power  
current selected through  
adjustable switch. 350mA - 15W /  
400mA - 17W / 450mA - 19W /  
500mA - 22W / 550mA - 24W /  
600mA - 26W / 650mA - 28W /  
700mA - 30W.