

FLOS

05.7111.74 Black

Kap Ø 105 Adjustable Optic Medium

Designed by FLOS Architectural, 2019

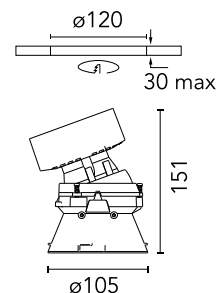
LED - LED array - 22.8W - 1410lm - 2700K - CRI> 90 - Beam° 27



Recessed luminaire with LED light source. Remote transformer not included. Pre-installation frame. To be ordered separately. Diffusing lens included.

Are you a professional and your project needs consulting and support?

[BOOK AN APPOINTMENT](#)



Main specifications

Mounting	Ceiling recessed
Environments	Indoor dry location
Light Source Type	LED
LED type	LED array
Lamp category	LED
Ilcos	No
Bulb finish	Clear
Number of heads	1
Power (W)	22.8
System power (W)	25.9
Source flux (lm)	2085
System flux (lm)	1410
Efficacy (lm/W)	54

Physical

Colour	Black
Trim	No
Orientation	Adjustable
Rotation (°)	360
Longitudinal tilting (°)	20
Transversal tilting (°)	20
Recessed depth (mm)	144
Spot diameter (mm)	105
Net weight (kg)	0.7
Package height (mm)	190
Package width (mm)	175
Package length (mm)	220
IP internal	20
IP external	54

Download

[Mounting instructions](#)  PDF

Photometric Files

[LDT / IES](#)  ZIP

Technical Drawings

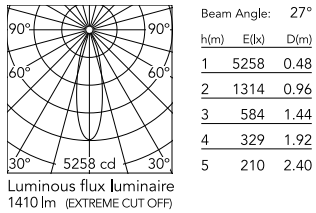
[2D](#)  ZIP

[3D](#)  ZIP

[Bim](#)  ZIP



Schematic light drawing



Photometric

Lighting type	Direct
Light distribution	Symmetric
CCT (K)	2700
CRI>	90
McAdam steps (SDCM)	3
LED Life / Failure Ratio	L80B50
Beam angle C0-180 (°)	27
Beam angle C90-270 (°)	27
UGR _L	3

Electrical

Insulation class	III
Frequency (Hz)	0
Main voltage (Vac)	34
Forward voltage (V)	34
LED current (mA)	650
Driver	Remote excluded
Dimmable	Yes
Dimming type	Non Dimmable, Dimmable DALI 2, Dimmable Casambi, Dimmable 1-10V
Emergency type	No

Ecodesign and Energy Labelling

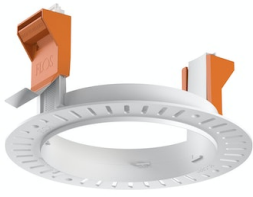


Replaceable (LED only)
light source by a
professional



Replaceable control
gear by a professional

Accessories & Power Supply



ø120



REQUIRED
Frame

Installation

08.0132.00

Installation frame No Trim



REQUIRED
Power supply

Electrical

60.9207

Continuous current power supply, dimmable Casambi, 220/240V - 50/60Hz, 300mA - 16W / 350mA - 18,5W / 400mA - 21,5W / 450 mA - 24W / 500mA - 27W / 600mA - 32W / 650 mA - 35W / 700 mA - 36W /750 /800 /900 /1000 /1050 /1200 mA - 38W.



REQUIRED
Power supply

Electrical

60.9439

Continuous current power supply, 0/1-10V dimmable, 220/240V - 50/60Hz, 300mA- 16W / 350mA-18W / 400mA- 21W / 500mA-27W / 600mA- 32W / 650mA-35W /700 /750 /800 /900/ 950/ 1000 /1050mA- 36W



REQUIRED
Power supply

Electrical

60.9186

Continuous current supply source of 240V - 50/60Hz with dimmable Dali 2, push dimming. 300mA - 16W / 350mA - 18W / 400mA - 21W / 500mA - 27W / 600mA - 32W / 650 mA - 35W / 700 / 750 / 800 / 900 / 1000 / 1050 mA - 36W



REQUIRED
Power supply

Electrical

60.9592



REQUIRED
Power supply

Electrical

60.9692

30W, 220-240V - 50/60Hz
Constant current power supply, with dip-switch programmable power supply current.

Non dimmable continuous
current power supply. 15-30W,
220/240V -50/60Hz with power
current selected through
adjustable switch. 350mA - 15W /
400mA - 17W / 450mA - 19W /
500mA - 22W / 550mA - 24W /
600mA - 26W / 650mA - 28W /
700mA - 30W.