

# FLOS

05.7117.B1 White

## Kap Ø 105 Adjustable Optic Flood

Designed by FLOS Architectural, 2019

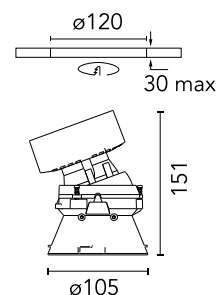
LED - LED array - 22.8W - 2407lm - 3000K - CRI> 90 - Beam° 51



Recessed luminaire with LED light source. Remote transformer not included. Pre-installation frame. To be ordered separately. Diffusing lens included.

Are you a professional and your project needs consulting and support?

[BOOK AN APPOINTMENT](#)



### Main specifications

Mounting	Ceiling recessed
Environments	Indoor dry location
Light source type	LED
Light sources included	Yes
LED type	LED array
Lamp category	LED
Number of lamps	1
Power (W)	22.8
System power (W)	25.9
Source flux (lm)	2767
Lumen Output (lm)	2407
Efficacy (lm/W)	92

### Physical

Colour	White
Trim	No
Orientation	Adjustable
Rotation (°)	360
Longitudinal tilting (°)	20
Transversal tilting (°)	20
Recessed depth (mm)	144
Spot diameter (mm)	105
Length (mm)	105
Net weight (kg)	0.7
Package height (mm)	190
Package width (mm)	175
Package length (mm)	220
IP internal	20
IP external	54

### Download

[Mounting instructions](#)  PDF


### Photometric Files

[LDT / IES](#)  ZIP

### Technical Drawings

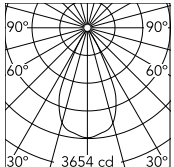
[2D](#)  ZIP

[3D](#)  ZIP

[Bim](#)  ZIP



## Schematic light drawing



Beam Angle: 51°

h(m)	E(lx)	D(m)
1	3654	0.96
2	914	1.91
3	406	2.87
4	228	3.82
5	146	4.78

Luminous flux luminaire  
2407 lm (EXTREME CUT OFF)

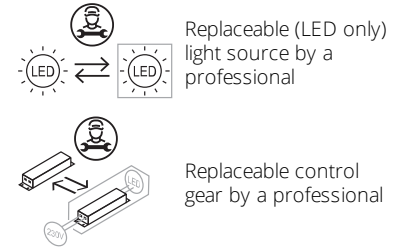
## Photometric

Lighting type	Direct
Light distribution	Symmetric
CCT (K)	3000
CRI>	90
McAdam steps (SDCM)	3
LED Life / Failure Ratio	L80B50 > 50.000h (Tc=85°C)
Beam angle C0-180 (°)	51
Beam angle C90-270 (°)	51

## Electrical

Insulation class	III
Frequency (Hz)	0
Forward voltage (V)	34
LED current (mA)	650
Power supply	Remote excluded
Dimmable	Yes
Power supply type	Non Dimmable, Dimmable DALI 2, Dimmable Casambi, Dimmable 1-10V

## Ecodesign and Energy Labelling



## Accessories & Power Supply



REQUIRED  
Power supply

Electrical

60.9439

Continuous current power supply, 0/1-10V dimmable, 220/240V - 50/60Hz, 300mA-16W / 350mA-18W / 400mA-21W / 500mA-27W / 600mA-32W / 650mA-35W / 700 / 750 / 800 / 900 / 950 / 1000 / 1050mA-36W



REQUIRED  
Power supply

Electrical

60.9592

Non dimmable continuous current power supply. 15-30W, 220/240V -50/60Hz with power current selected through adjustable switch. 350mA - 15W / 400mA - 17W / 450mA - 19W / 500mA - 22W / 550mA - 24W / 600mA - 26W / 650mA - 28W / 700mA - 30W.



REQUIRED  
Power supply

Electrical

60.9692

30W, 220-240V - 50/60Hz  
Constant current power supply, with dip-switch programmable power supply current.

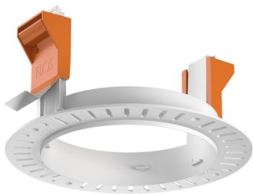


REQUIRED  
Power supply

Electrical

60.7709

Continuous current supply source of 220-240V - 50/60Hz with selectable current via switch. Dimmable Dali 1, Dali 2, push dimming. 150mA - 7.8W / 200mA - 10.4W / 250mA - 13W / 300mA - 15.6W / 350mA - 18.2W / 400mA - 20.8W / 450mA - 23.4W / 500mA - 26W /...



ø120



REQUIRED  
Frame

Installation

08.0132.00

Installation frame No Trim



REQUIRED  
Power supply

Electrical

60.9207

Casambi continuous current  
power supply, dimmable  
220/240V - 50/60Hz, 300mA -  
16W / 350mA - 18,5W / 400mA -  
21,5W / 450 mA - 24W / 500mA -  
27W / 600mA - 32W / 650 mA -  
35W / 700 mA - 36W /750 /800  
/900 /1000 /1050 /1200 mA -  
38W.