

# FLOS

05.7112.GL Gold

## Kap Ø 105 Adjustable Optic Flood

Designed by FLOS Architectural, 2019

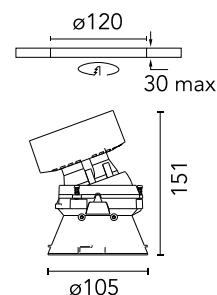
LED - LED array - 22.8W - 1786lm - 2700K - CRI> 90 - Beam° 50



Recessed luminaire with LED light source. Remote transformer not included. Pre-installation frame. To be ordered separately. Diffusing lens included.

Are you a professional and your project needs consulting and support?

[BOOK AN APPOINTMENT](#)



### Main specifications

|                   |                     |
|-------------------|---------------------|
| Mounting          | Ceiling recessed    |
| Environments      | Indoor dry location |
| Light Source Type | LED                 |
| LED type          | LED array           |
| Lamp category     | LED                 |
| Ilcos             | No                  |
| Bulb finish       | Clear               |
| Number of heads   | 1                   |
| Power (W)         | 22.8                |
| System power (W)  | 25.9                |
| Source flux (lm)  | 2085                |
| System flux (lm)  | 1786                |
| Efficacy (lm/W)   | 68                  |

### Physical

|                          |            |
|--------------------------|------------|
| Colour                   | Gold       |
| Trim                     | No         |
| Orientation              | Adjustable |
| Rotation (°)             | 360        |
| Longitudinal tilting (°) | 20         |
| Transversal tilting (°)  | 20         |
| Recessed depth (mm)      | 144        |
| Spot diameter (mm)       | 105        |
| Net weight (kg)          | 0.7        |
| Package height (mm)      | 190        |
| Package width (mm)       | 175        |
| Package length (mm)      | 220        |
| IP internal              | 20         |
| IP external              | 54         |

### Download

[Mounting instructions](#) PDF

### Photometric Files

[LDT / IES](#) ZIP

### Technical Drawings

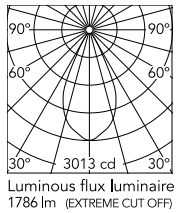
[2D](#) ZIP

[3D](#) ZIP

[Bim](#) ZIP



## Schematic light drawing



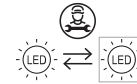
## Photometric

|                          |           |
|--------------------------|-----------|
| Lighting type            | Direct    |
| Light distribution       | Symmetric |
| CCT (K)                  | 2700      |
| CRI>                     | 90        |
| McAdam steps (SDCM)      | 3         |
| LED Life / Failure Ratio | L80B50    |
| Beam angle C0-180 (°)    | 50        |
| Beam angle C90-270 (°)   | 50        |
| UGR <sub>L</sub>         | 17        |

## Electrical

|                     |                                                                          |
|---------------------|--------------------------------------------------------------------------|
| Insulation class    | III                                                                      |
| Frequency (Hz)      | 0                                                                        |
| Main voltage (Vac)  | 34                                                                       |
| Forward voltage (V) | 34                                                                       |
| LED current (mA)    | 650                                                                      |
| Driver              | Remote excluded                                                          |
| Dimmable            | Yes                                                                      |
| Dimming type        | Non Dimmable,<br>Dimmable DALI 2,<br>Dimmable Casambi,<br>Dimmable 1-10V |
| Emergency type      | No                                                                       |

## Ecodesign and Energy Labelling

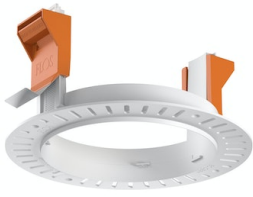


Replaceable (LED only)  
light source by a  
professional



Replaceable control  
gear by a professional

## Accessories & Power Supply



ø120



REQUIRED  
Frame

Installation

08.0132.00

Installation frame No Trim



REQUIRED  
Power supply

Electrical

60.9207

Continuous current power supply, dimmable Casambi, 220/240V - 50/60Hz, 300mA - 16W / 350mA - 18,5W / 400mA - 21,5W / 450 mA - 24W / 500mA - 27W / 600mA - 32W / 650 mA - 35W / 700 mA - 36W /750 /800 /900 /1000 /1050 /1200 mA - 38W.



REQUIRED  
Power supply

Electrical

60.9439

Continuous current power supply, 0/1-10V dimmable, 220/240V - 50/60Hz, 300mA- 16W / 350mA-18W / 400mA- 21W / 500mA-27W / 600mA- 32W / 650mA-35W /700 /750 /800 /900/ 950/ 1000 /1050mA- 36W



REQUIRED  
Power supply

Electrical

60.9186

Continuous current supply source of 240V - 50/60Hz with dimmable Dali 2, push dimming. 300mA - 16W / 350mA - 18W / 400mA - 21W / 500mA - 27W / 600mA - 32W / 650 mA - 35W / 700 / 750 / 800 / 900 / 1000 / 1050 mA - 36W



REQUIRED  
Power supply

Electrical

60.9592



REQUIRED  
Power supply

Electrical

60.9692

30W, 220-240V - 50/60Hz  
Constant current power supply, with dip-switch programmable power supply current.

Non dimmable continuous  
current power supply. 15-30W,  
220/240V -50/60Hz with power  
current selected through  
adjustable switch. 350mA - 15W /  
400mA - 17W / 450mA - 19W /  
500mA - 22W / 550mA - 24W /  
600mA - 26W / 650mA - 28W /  
700mA - 30W.