

FLOS

05.7136.GL Gold

Kap Ø 105 Adjustable

Designed by FLOS Architectural, 2019



Recessed luminaire with main voltage source.

Are you a professional and your project needs consulting and support?

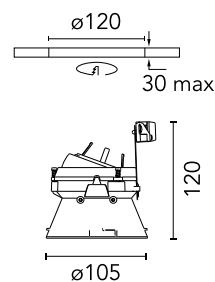
[BOOK AN APPOINTMENT](#)

Main specifications

| | |
|-------------------|---------------------|
| Mounting | Ceiling recessed |
| Environments | Indoor dry location |
| Light Source Type | Bulb |
| Lamp category | LED |
| Lamp type | PAR16 |
| Lamp holders | GZ10 |
| Ilcos | No |
| Number of heads | 1 |
| Power (W) | MAX 3.9 |
| System power (W) | 4.2 |

Physical

| | |
|--------------------------|------------|
| Colour | Gold |
| Trim | No |
| Orientation | Adjustable |
| Rotation (°) | 360 |
| Longitudinal tilting (°) | 20 |
| Transversal tilting (°) | 20 |
| Recessed depth (mm) | 155 |
| Spot diameter (mm) | 105 |
| Net weight (kg) | 0.45 |
| Package height (mm) | 190 |
| Package width (mm) | 175 |
| Package length (mm) | 220 |
| IP internal | 54 |
| IP external | 54 |



Download

[Mounting instructions](#)

[PDF](#)

Ecodesign and Energy Labelling



Replaceable (LED only) light source by an end-user



Photometric

| | |
|--------------------|-----------|
| Lighting type | Direct |
| Light distribution | Symmetric |

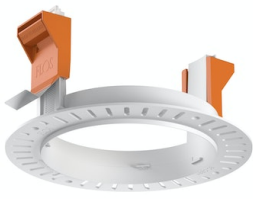
Electrical

| | |
|---------------------|-------|
| Insulation class | II |
| Frequency (Hz) | 50/60 |
| Main voltage (Vac) | 230 |
| Forward voltage (V) | 230 |
| LED current (mA) | -9 |
| Emergency type | No |

Notes

Not suitable for lens accessories.

Accessories & Power Supply



∅120



REQUIRED
Frame

Installation

08.0132.00

Installation frame No Trim