

FLOS

05.7136.B1 White

Kap Ø 105 Adjustable

Designed by FLOS Architectural, 2019



Recessed luminaire with main voltage source.

Are you a professional and your project needs consulting and support?

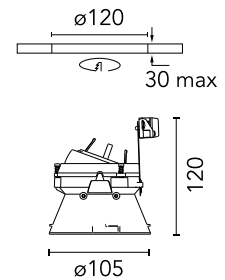
[BOOK AN APPOINTMENT](#)

Main specifications


Mounting	Ceiling recessed
Environments	Indoor dry location
Light Source Type	Bulb
Lamp category	LED
Lamp type	PAR16
Lamp holders	GZ10
Ilcos	No
Number of heads	1
Power (W)	MAX 3.9
System power (W)	4.2

Physical

Colour	White
Trim	No
Orientation	Adjustable
Rotation (°)	360
Longitudinal tilting (°)	20
Transversal tilting (°)	20
Recessed depth (mm)	155
Spot diameter (mm)	105
Net weight (kg)	0.45
Package height (mm)	190
Package width (mm)	175
Package length (mm)	220
IP internal	54
IP external	54



Download

[Mounting instructions](#)  PDF

Photometric Files

[LDT / IES](#)  ZIP

Technical Drawings

[2D](#)  ZIP

[3D](#)  ZIP

[Bim](#)  ZIP



Ecodesign and Energy Labelling



Replaceable (LED only) light source by an end-user

Photometric

Lighting type	Direct
Light distribution	Symmetric

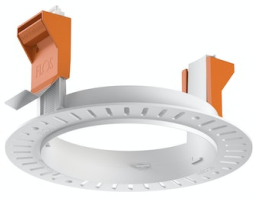
Electrical

Insulation class	II
Frequency (Hz)	50/60
Main voltage (Vac)	230
Forward voltage (V)	230
LED current (mA)	-9
Emergency type	No

Notes

Not suitable for lens accessories.

Accessories & Power Supply



ø120



REQUIRED
Frame

Installation

08.0132.00

Installation frame No Trim