

FLOS

F017D1DD006 Grey

Ingraze Fixed Frame L 1200

Designed by FLOS Outdoor, 2023

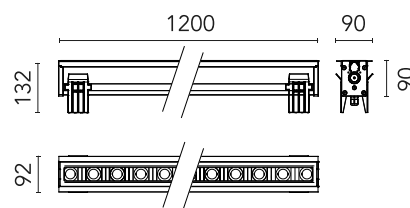


2572lm - 2200K - CRI> 80 - Beam° 12

High-power LED source included and rear lenses. 1-10V or DALI on-off and dimmable 220-240V power supply. Compulsory installation box to be ordered separately. Pre-wired with H2O Stop quick connectors, lug/socket included. ACT (Anti-Corrosion Treatment) upon request.

Are you a professional and your project needs consulting and support?

BOOK AN APPOINTMENT



Main specifications

EAN	8054793272566
Mounting	In-ground
Environments	Outdoor wet location
LED type	Power LED
System power (W)	33.5
Lumen Output (lm)	2572


Physical

Colour	Grey
Orientation	Fixed
Length (mm)	1200
Net weight (kg)	6.76
Package height (mm)	235
Package width (mm)	180
Package length (mm)	1272
Package volume (m3)	0.05
IP internal	66
IP external	67
Static load (kg)	2500.000


Download

Mounting instructions  ZIP

Photometric Files

LDT / IES  ZIP

Technical Drawings

2D  ZIP

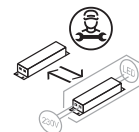
3D  ZIP



Ecodesign and Energy Labelling

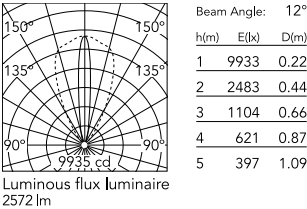


Replaceable (LED only) light source by a professional



Replaceable control gear by a professional

Schematic light drawing



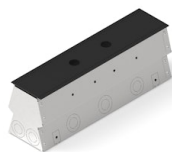
Photometric

Light distribution	Asymmetric
CCT (K)	2200
CRI>	80
Beam angle C0-180 (°)	12
Beam angle C90-270 (°)	50

Electrical

Insulation class	I
Frequency (Hz)	50/60
Main voltage (Vac)	220-240
Power supply	Integrated
Power supply type	Dimmable DALI 2

Accessories & Power Supply



REQUIRED
Frame

Installation

F017Z040000

Framed installation box for single flush installations L 1200



REQUIRED
Frame

Installation

F017Z140000

Framed/frameless installation box for single installations L 1200



REQUIRED
Accessory

Electrical

F990C082000

5-pin connector kit with detachable socket + EU plug.



REQUIRED
Accessory

Electrical

F990C083000

4-pin connector kit with detachable socket + EU plug.



OPTIONAL
Accessory

F990C010000

3/4 way terminal block 4 poles IP68 H2O stop. (ø5,5÷12mm cable)



OPTIONAL
Frame

Installation

F017Z240000

Framed flush continuous line module L 1200



OPTIONAL
Frame

Installation

F017Z241000

Framed/frameless continuous line module L 1200



OPTIONAL
Frame

Installation

F017Z490000

Standard end-plate cover kit.



OPTIONAL
Frame

Installation

F017Z530000

Standard connecting plate kit.



OPTIONAL
Frame

Installation

F017Z531000

Anti-theft connecting plate kit.



OPTIONAL
Frame

Installation

F017Z550006

Framed anti-theft bracket kit.



OPTIONAL
Frame

Installation

F017Z550033

Framed anti-theft bracket kit.



OPTIONAL
Frame

Installation

F017Z560006

Frameless anti-theft bracket kit.



OPTIONAL
Frame

Installation

F017Z560033

Frameless anti-theft bracket kit.



OPTIONAL
Frame

Installation

F017Z640000

Complete framed anti-theft
installation box for single flush
installations L 1200



OPTIONAL
Frame

Installation

F017Z740000

Framed/frameless anti-theft
installation box for single
installations L 1200



OPTIONAL
Accessory

F990C030000

4 way junction box 5 poles IP68
(6-14 mm cables)



OPTIONAL
Accessory

F990C00A000

2 way terminal block 4 poles IP68
H20 stop. (ø5,5÷12mm cable)



OPTIONAL
Accessory

F990C080000

Connector kit 5-pole flying socket
+ EU plug IP68.



OPTIONAL
Accessory

Electrical

F990C081000

4-pin connector kit with
detachable socket + IP68 EU
plug.