

FLOS

■ F3157030 Black

IC Lights C/W1 Double

Designed by Michael Anastassiades, 2020

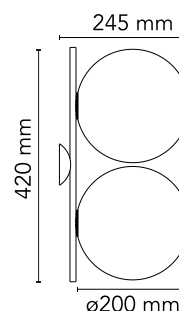


Halogen - 2 x 60W - CRI> 95

Wall-ceiling lamp providing diffused light. Frame in brass, brushed and transparent varnished or chrome steel. Blown glass opal diffuser.

Are you a professional and your project needs consulting and support?

BOOK AN APPOINTMENT



Main specifications

EAN	8059607000038
Mounting	Ceiling, Wall
Environments	Indoor dry location
Light source type	Bulb
Light sources included	No
Lamp category	Halogen
Lamp holders	E14
Iicos	HSGS
Number of lamps	2
Power (W)	60

Physical

Colour	Black
Length (mm)	245
Net weight (kg)	2.7
Package volume (m3)	0.06
IP internal	20

Download

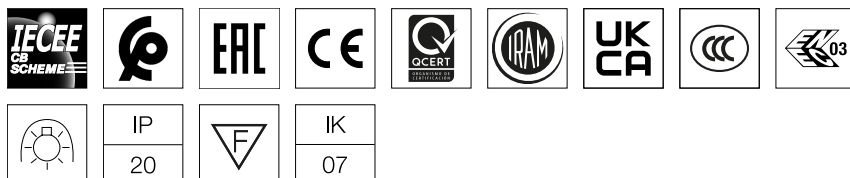
Mounting instructions  PDF

Photometric Files

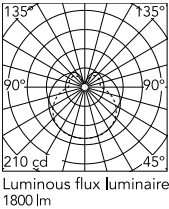
LDT / IES  LDT

Technical Drawings

 Bim  ZIP



Schematic light drawing



Photometric

Lighting type	Total
Light distribution	Symmetric
CRI>	95
Extreme cut off	No

Electrical

Insulation class	I
Frequency (Hz)	50/60
Main voltage (Vac)	220-250
Dimmable	Yes
Dimming interface	Remote Dimmable (Dimmer Not Included)
Batteries inside	No

Bulbs



NOT INCLUDED

RF32290

LED Lamp E14 8W 2700K T28

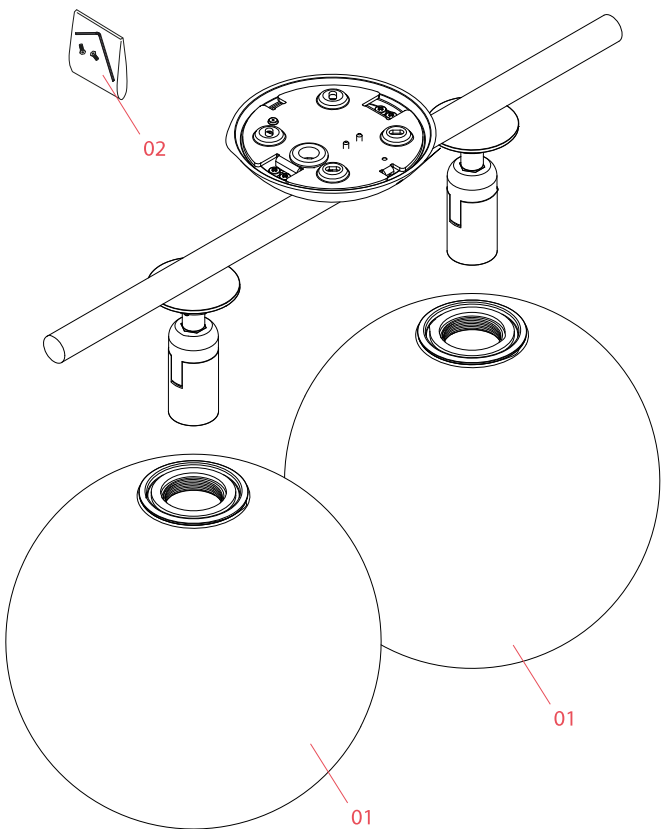


NOT INCLUDED

RF32291

LED Lamp E14 8W 3000K T28

Spare Parts



- | | | |
|-----|--|-----------|
| 01. | IC Lights 1 diffuser for black version | F3136030 |
| 02. | Kit with screws and allen key | RF3160100 |



F3136030

IC Lights 1 diffuser for black
version



RF3160100

Kit with screws and allen key