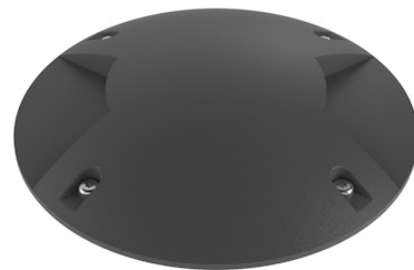


FLOS

FA53504933 Anthracite

Gobi 180 Double NEW

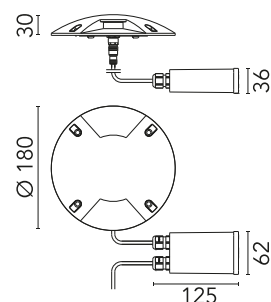
Designed by FLOS Outdoor, 2013



LED light source included. Integrated electric power supply 220-240V ON/OFF. Requires a junction box to be ordered separately. The luminaire is equipped with a protruding, neoprene, 400 mm cable with an M12 watertight screw-on connector towards the luminaire, and with a 300 mm cable for the connection to the power line. Adjustable light intensity version available upon request.

Are you a professional and your project needs consulting and support?

BOOK AN APPOINTMENT



Main specifications

EAN	8054793673844
Mounting	In-ground
Environments	Outdoor wet location
Light source type	LED
Light sources included	Yes
LED type	Power LED
Number of lamps	1
Power (W)	4
System power (W)	7
Source flux (lm)	466
Lumen Output (lm)	128

Physical

Colour	Anthracite
Orientation	Fixed
Net weight (kg)	0.82
Package height (mm)	150
Package width (mm)	190
Package length (mm)	190
Package volume (m3)	0.01
IP internal	67
IP external	66

Download

Mounting instructions [ZIP](#)

Photometric Files

LDT / IES [ZIP](#)

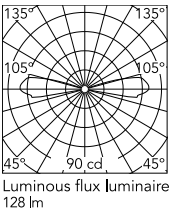
Technical Drawings

2D [ZIP](#)

3D [ZIP](#)



Schematic light drawing



Photometric

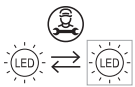
Light distribution	Asymmetric
CCT (K)	2700
CRI>	80
Extreme cut off	No

Electrical

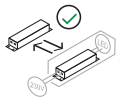
Insulation class	II
Frequency (Hz)	50/60
Main voltage (Vac)	220-240
Power supply	Remote included
Dimmable	No
Power supply type	Non Dimmable
Dimming interface	Not Dimmable
Emergency	No

Ecodesign and Energy Labelling

This product contains a light source of energy efficiency class E



Replaceable (LED only) light source by a professional



Replaceable control gear by an end-user

Notes

Dimmable version on request

Accessories & Power Supply



REQUIRED
Accessory

FA194
Box for Installation Gobi 180



REQUIRED
Accessory

FA195
High Resistance In-ground Box
Gobi 180



OPTIONAL
Accessory

F990C00A000
2 way terminal block 4 poles IP68
H2O stop. (ø5,5÷12mm cable)



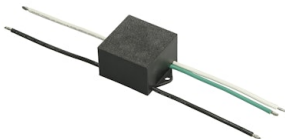
OPTIONAL
Accessory

F990C010000
3/4 way terminal block 4 poles
IP68 H2O stop. (ø5,5÷12mm
cable)



OPTIONAL
Accessory

F990C050000
2 way terminal block 2 poles IP68
H2O stop. (Ø4÷6,9mm cable)



OPTIONAL
Accessory

F990E00A000
S.P.D. (SURGE PROTECTION
DEVICE)