

# FLOS

FA53504133 Anthracite

## Gobi 130 Mono NEW

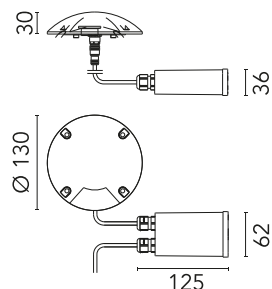
Designed by FLOS Outdoor



LED light source included. Integrated electric power supply 220-240V ON/OFF. Requires a junction box to be ordered separately. The luminaire is equipped with a protruding, neoprene, 400 mm cable with an M12 watertight screw-on connector towards the luminaire, and with a 300 mm cable for the connection to the power line. Adjustable light intensity version available upon request.

Are you a professional and your project needs consulting and support?

[BOOK AN APPOINTMENT](#)



### Main specifications

Mounting	Ground recessed
Environment	Outdoor wet location
LED type	Power LED
Number of heads	1
Power (W)	1.1
System power (W)	4
Source flux (lm)	129
System flux (lm)	35

### Physical

Colour	Anthracite
Orientation	Fixed
IP internal	66/67

### Download

[Mounting instructions](#) ZIP

### Photometric Files

[LDT / IES](#) ZIP

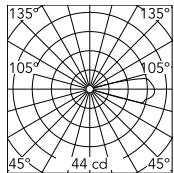
### Technical Drawings

[2D](#) ZIP

[3D](#) ZIP



## Schematic light drawing



Luminous flux luminaire  
35 lm

## Photometric

Lighting type	Direct
Light distribution	Asymmetric
CCT (K)	2700
CRI>	80

## Electrical

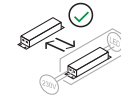
Insulation class	II
Frequency (Hz)	50-60
Main voltage (Vac)	220-240
Driver	Remote included
Dimmable	No
Dimming type	Non Dimmable
Emergency type	No

## Ecodesign and Energy Labelling

This product contains a light source of energy efficiency class E



Replaceable (LED only)  
light source by a  
professional



Replaceable control  
gear by an end-user

## Notes

Dimmable version on request

## Accessories & Power Supply



REQUIRED  
Accessory

FA192

Box for Installation Gobi 130



REQUIRED  
Accessory

FA193

High Resistance In-ground Box  
Gobi 130



OPTIONAL  
Accessory

F990C00A000

2 way terminal block 4 poles IP68  
H2O stop. ( $\varnothing 5,5 \div 12$ mm cable)



OPTIONAL  
Accessory

F990C010000

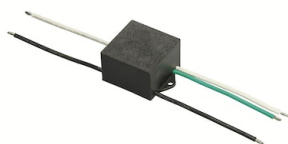
3/4 way terminal block 4 poles  
IP68 H2O stop. ( $\varnothing 5,5 \div 12$ mm  
cable)



OPTIONAL  
Accessory

F990C050000

2 way terminal block 2 poles IP68  
H2O stop. ( $\varnothing 4 \div 6,9$ mm cable)



OPTIONAL  
Accessory

F990E00A000

S.P.D. (SURGE PROTECTION  
DEVICE)