

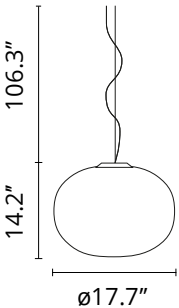
## Glo-Ball Suspension 2

Designed by Jasper Morrison, 1998



Incandescent - 150W

Marrying the functional with the otherworldly, the Glo-Ball Suspension by Jasper Morrison is a remarkably versatile design that punctuates any room it is featured in. This calming and versatile design is among the most sought-after form of modern designer pendant lighting. Material: The delicate glass globe diffuser of this contemporary pendant light is made of externally acid-etched, hand-blown, flashed opaline glass. The diffuser support is transparent PC. It features a 30% fiberglass reinforced injection-molded polyamide rose and includes a pressed and galvanized ceiling fitting, as well as a steel suspension cable. Inspiration behind the design: Jasper Morrison calls his designs "super normal," meaning that they do their job well and without disrupting their environment. Designed in 1998 to invoke the beauty of a full moon, the Glo Ball Suspension proves just how stunning the norm can be. Explore the entire Glo Ball collection, [here](#).



Are you a professional and your project needs consulting and support?

BOOK AN APPOINTMENT

### Main specifications

Mounting	Suspension
Environments	Indoor dry location
Light Source Type	Bulb
Light sources included	No
Lamp category	Incandescent
Lamp type	A
Lamp holders	E26
Number of lamps	1
Power (W)	150

### Physical

Color	White
Length (in)	17.72
Cord color	Clear
Cord length (in)	106.299
Canopy color	White
Canopy length/diameter (in)	5.748
Canopy height (in)	1.417
Net weight (lb)	8.75
Package volume (in)	7947.03
IP internal	20

### Download

Mounting instructions





Photometric

Lighting type	Total
Light distribution	Roto symmetric
Extreme cut off	No

Electrical

Insulation class	I
Frequency (Hz)	60
Main voltage (Vac)	120
Dimmable	Yes
Dimming interface	Remote Dimmable (Dimmer Not Included)
Batteries inside	No

Bulbs

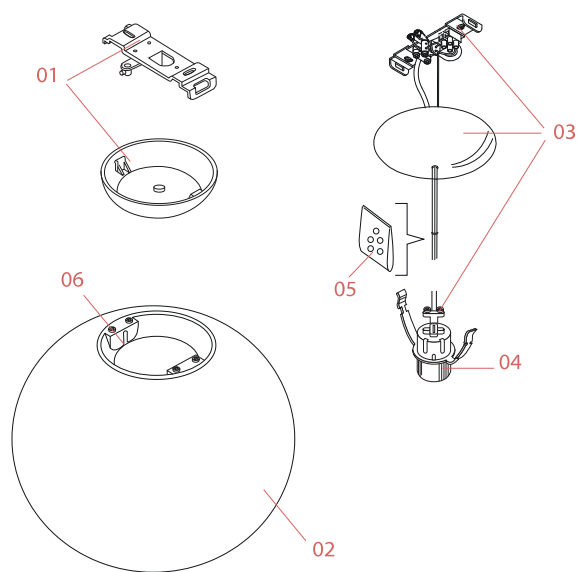


NOT INCLUDED

RF34655

15W E26 T38 Led Lamp

Spare Parts



- |     |   |           |
|-----|---|-----------|
| 01. | White Ceiling Rose Assembly                             | RAU369209 |
| 02. | Glo-Ball Suspension2 white diffuser                     | F3015061  |
| 03. | GloBall Suspension 2 Halogen Electrical Wiring Assembly | AU251200  |
| 04. | Lampholder Assembly                                     | RAU251001 |
| 05. | Kit of 5 or rings                                       | RF05382   |
| 06. | Glo-Ball Suspension 2 Ring nut assembly for diffuser    | RF09514   |



RAU369209  
White Ceiling Rose Assembly



F3015061  
Glo-Ball Suspension2 white  
diffuser



AU251200  
GloBall Suspension 2 Halogen  
Electrical Wiring Assembly



RAU251001  
Lampholder Assembly



RF05382  
Kit of 5 or rings



RF09514  
Glo-Ball Suspension 2 Ring nut  
assembly for diffuser