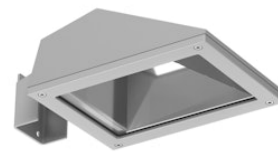


## Franco 1 CoB Led Symmetric Optic NEW

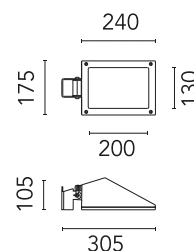
Designed by FLOS Outdoor, 2007



LED source included. Integrated electrical power supply 220-240V ON/OFF. Fixing bracket included. Equipped with a M16x1.5 cable guide (for 4.5mm<ø<10mm cables) and IP68 connector. To ensure the tightness of the cable guide it's recommended to use flexible electric cables suitable for exterior use. Optional accessories: posts; mounts and arms to install as a mast; protruding arm for wall mounting.

Are you a professional and your project needs consulting and support?

[BOOK AN APPOINTMENT](#)



### Main specifications

EAN	8054793620091
Mounting	Ground
Environments	Outdoor wet location
Light source type	LED
Light sources included	Yes
LED type	LED array
Number of lamps	1
Power (W)	22
System power (W)	24
Source flux (lm)	3221
Lumen Output (lm)	2166

### Physical

Colour	Grey
Orientation	Adjustable
Longitudinal tilting (°)	103
Net weight (kg)	2.2
Package height (mm)	130
Package width (mm)	190
Package length (mm)	315
Package volume (m3)	0.01
IP internal	65

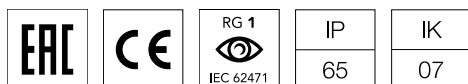
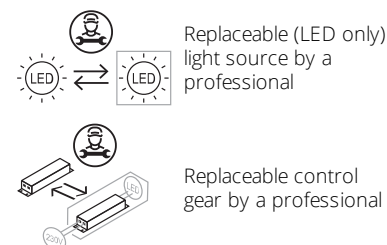
### Download

Mounting instructions



### Ecodesign and Energy Labelling

This product contains a light source of energy efficiency class D



Photometric

Light distribution	Symmetric
CCT (K)	4000
CRI>	80
Beam angle C0-180 (°)	75
Beam angle C90-270 (°)	76
Extreme cut off	No

Electrical

Insulation class	I
Frequency (Hz)	50/60
Main voltage (Vac)	220-240
Power supply	Integrated
Dimmable	No
Dimming interface	Not Dimmable
Emergency	No

Notes

Please check with your referent person in our Front Office if a code modification is needed to meet the required certification compliance

Accessories & Power Supply



OPTIONAL  
Accessory

FA116  
Base Plate and Fixing Bolts for  
Pole Ø 102 mm h 4000/5000  
mm with Base



OPTIONAL  
Accessory

FA110906  
Pole Franco 1 h 900(+300 mm  
Inground) mm Ø60 mm



OPTIONAL  
Accessory

FA110506  
Pole Franco 1 h 500(+300 mm  
Inground) mm Ø60 mm



OPTIONAL  
Accessory

FA11706  
Pole Franco 1 h 2000(with Base)  
mm Ø60 mm



OPTIONAL  
Bracket

FA22206  
Pole Bracket Franco 1/Perseo 3 Ø  
102 mm 180 mm Double



OPTIONAL  
Bracket

FA22106  
Pole Bracket Franco 1/Perseo 3 Ø  
102 mm 180 mm Single



OPTIONAL  
Bracket

FA22406  
Pole Bracket Franco 1/Perseo 3 Ø  
102 mm 500 mm Double



OPTIONAL  
Bracket

FA22306  
Pole Bracket Franco 1/Perseo 3 Ø  
102 mm 500 mm Single



OPTIONAL  
Pole

FA24806

Pole Ø76 mm h 3500 mm(with  
Base)



OPTIONAL  
Pole

FA25006

Pole Ø76 mm h 3500 mm (+500  
mm In-ground)



OPTIONAL  
Pole

FA24906

Pole Ø76 mm h 4500 mm(with  
Base)



OPTIONAL  
Pole

FA414006

Pole Ø 102 mm h 4000 mm With  
Base



OPTIONAL  
Pole

FA414506

Pole Ø 102 mm h 4000 mm  
(+500 mm In-ground)



OPTIONAL  
Pole

FA415006

Pole Ø 102 mm h 5000 mm With  
Base



OPTIONAL  
Pole

FA415506

Pole Ø 102 mm h 5000 mm  
(+500 mm In-ground)



OPTIONAL  
Accessory

FA8806

Wall Bracket 620 mm Franco  
1/Perseo 3



## OPTIONAL Accessory

FA243

Base Plate and Fixing Bolts Franco  
1



## OPTIONAL Bracket

FA22606

Pole Bracket Franco 1/Perseo 3 Ø  
60 mm 180 mm Double



## OPTIONAL Bracket

FA22506

Pole Bracket Franco 1/Perseo 3 Ø  
60 mm 180 mm Single



## OPTIONAL Bracket

FA22806

Pole Bracket Franco 1/Perseo 3 Ø  
60 mm 500 mm Double



## OPTIONAL Bracket

FA22706

Pole Bracket Franco 1/Perseo 3 Ø  
60 mm 500 mm Single



## OPTIONAL Bracket

FA23006

Pole Bracket Franco 1/Perseo 3 Ø  
76 mm 180 mm Double



## OPTIONAL Bracket

FA22906

Pole Bracket Franco 1/Perseo 3 Ø  
76 mm 180 mm Single



## OPTIONAL Bracket

FA23206

Pole Bracket Franco 1/Perseo 3 Ø  
76 mm 500 mm Double



OPTIONAL  
Bracket

FA23106

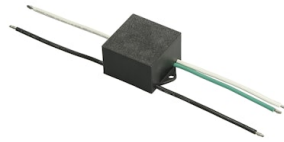
Pole Bracket Franco 1/Perseo 3 Ø  
76 mm 500 mm Single



OPTIONAL  
Pole

FA25106

Pole Ø76 mm h 4500 mm (+500  
mm In-ground)



OPTIONAL  
Accessory

F990E00A000

S.P.D. (SURGE PROTECTION  
DEVICE)



OPTIONAL  
Accessory

FA100906

Pole Franco 1 h 900(with Base)  
mm Ø60 mm



OPTIONAL  
Accessory

FA100506

Pole Franco 1 h 500(with Base)  
mm Ø60 mm