

# FLOS

05.8205.14.UQ Black

## Eclectic 90 Fixed Soft Power Led - Non IC

Designed by FLOS Architectural, 2022

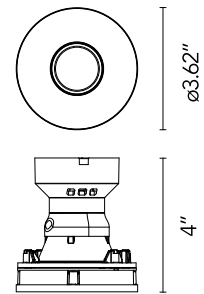


7.3W - 311lm - 2700K - CRI> 90 - Beam° 21

Eclectic Ø90. Non-adjustable Downlight. "Soft" style façade. Necessary installation pre-frames, not included (to be ordered separately). Recessed position of the LED: 41° cut-off angle. IP54 water tightness. Power LED light source\*. Alternative options for lenses, orientation modules and style façades are available as spare parts.

Are you a professional and your project needs consulting and support?

BOOK AN APPOINTMENT



### Main specifications

Mounting	Ceiling recessed
Environments	Indoor dry location
Light Source Type	LED
Light sources included	Yes
LED type	Power LED
Number of lamps	1
Power (W)	7.3
System flux (lm)	311

### Physical

Color	Black
Recessed depth (in)	4.49
Net weight (lb)	0.58
Package volume (in)	244.09
IP internal	54

### Download

Family spec sheet [↓ ZIP](#)  
Mounting instructions [↓ PDF](#)

### Photometric Files

LDT / IES [↓ ZIP](#)

### Technical Drawings

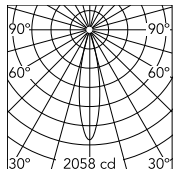
2D [↓ ZIP](#)  
3D [↓ ZIP](#)



### Ecodesign and Energy Labelling

 Replaceable (LED only) light source by an end-user

## Schematic light drawing



Beam Angle: 21°

h(m)	E(lx)	D(m)
1	2058	0.38
2	514	0.75
3	229	1.13
4	129	1.51
5	82	1.89

Luminous flux Luminaire  
311 lm

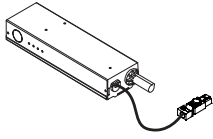
## Photometric

Lighting type	Direct
CCT (K)	2700
CRI>	90
McAdam steps (SDCM)	2700
Rf fidelity index	88
Rg gamut index	94
Beam angle C0-180 (°)	21
Beam angle C90-270 (°)	21

## Electrical

Insulation class	II
LED current (mA)	600
Driver	Attached Splice Box

## Accessories & Power Supply



REQUIRED

06.0399.00.90

Splice Box 600mA 1-10V for Eclectic 70&90



REQUIRED  
Frame

Installation

08.0671.14

Trim Frame

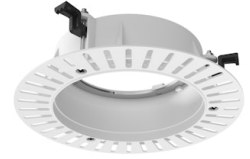


REQUIRED  
Frame

Installation

08.0671.40

Trim Frame

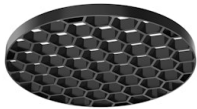


REQUIRED  
Frame

Installation

08.0673.00

No Trim Frame



OPTIONAL  
Accessory

Optical

08.0728.00

Honeycomb for Eclectic 90



OPTIONAL  
Filter

Optical

08.0735.00

Colour Temperature Increasing Filter for Eclectic 90



OPTIONAL  
Filter

Optical

08.0736.00

Colour Temperature Decreasing Filter for Eclectic 90

## Spare Parts



·	Super Spot Lens for Eclectic 90 Power Led	08.0718.00
·	Spot Lens for Eclectic 90 Power Led	08.0719.00
·	Medium Lens for Eclectic 90 Power Led	08.0720.00
·	Cone Frontal for Eclectic 90	08.0724.14
·	Cone Frontal for Eclectic 90	08.0724.40
·	Soft Frontal for Eclectic 90	08.0725.14
·	Soft Frontal for Eclectic 90	08.0725.40
·	Flat Frontal for Eclectic 90	08.0726.14
·	Flat Frontal for Eclectic 90	08.0726.40
·	Module Fix for Eclectic 90	08.0741.00
·	Module Adjustable for Eclectic 90	08.0742.00



08.0718.00  
Super Spot Lens for Eclectic 90  
Power Led



08.0719.00  
Spot Lens for Eclectic 90 Power  
Led



08.0720.00  
Medium Lens for Eclectic 90  
Power Led



08.0724.14  
Cone Frontal for Eclectic 90



08.0724.40  
Cone Frontal for Eclectic 90



08.0725.14  
Soft Frontal for Eclectic 90



08.0725.40  
Soft Frontal for Eclectic 90



08.0726.14  
Flat Frontal for Eclectic 90



08.0726.40

Flat Frontal for Eclectic 90



08.0741.00

Module Fix for Eclectic 90



08.0742.00

Module Adjustable for Eclectic 90