

FLOS

05.8204.40.UQ White

Eclectic 90 Fixed Soft Power Led - Non IC

Designed by FLOS Architectural, 2022

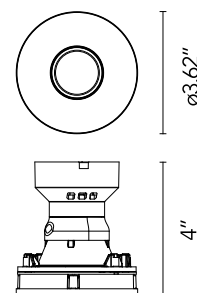


7.3W - 386lm - 2700K - CRI> 90 - Beam° 10

Eclectic Ø90. Non-adjustable Downlight. "Soft" style façade. Necessary installation pre-frames, not included (to be ordered separately). Recessed position of the LED: 41° cut-off angle. IP54 water tightness. Power LED light source*. Alternative options for lenses, orientation modules and style façades are available as spare parts.

Are you a professional and your project needs consulting and support?

[BOOK AN APPOINTMENT](#)



Main specifications

| | |
|------------------------|---------------------|
| Mounting | Ceiling recessed |
| Environments | Indoor dry location |
| Light Source Type | LED |
| Light sources included | Yes |
| LED type | Power LED |
| Number of lamps | 1 |
| Power (W) | 7.3 |
| System flux (lm) | 386 |

Physical

| | |
|---------------------|--------|
| Color | White |
| Recessed depth (in) | 4.49 |
| Net weight (lb) | 0.58 |
| Package volume (in) | 244.09 |
| IP internal | 54 |

Download

[Family spec sheet](#)  ZIP

[Mounting instructions](#)  PDF

Photometric Files

[LDT / IES](#)  ZIP

Technical Drawings

[2D](#)  ZIP

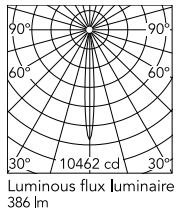
[3D](#)  ZIP



Ecodesign and Energy Labelling

 Replaceable (LED only) light source by an end-user

Schematic light drawing



| h(m) | E(lx) | D(m) |
|------|-------|------|
| 1 | 10462 | 0.17 |
| 2 | 2615 | 0.34 |
| 3 | 1162 | 0.50 |
| 4 | 654 | 0.67 |
| 5 | 418 | 0.84 |

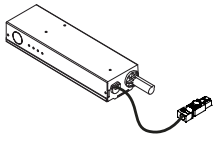
Photometric

| | |
|------------------------|--------|
| Lighting type | Direct |
| CCT (K) | 2700 |
| CRI> | 90 |
| McAdam steps (SDCM) | 2700 |
| Rf fidelity index | 88 |
| Rg gamut index | 94 |
| Beam angle C0-180 (°) | 10 |
| Beam angle C90-270 (°) | 10 |

Electrical

| | |
|------------------|---------------------|
| Insulation class | II |
| LED current (mA) | 600 |
| Driver | Attached Splice Box |

Accessories & Power Supply



REQUIRED

06.0399.00.90

Splice Box 600mA 1-10V for Eclectic 70&90



REQUIRED
Frame

Installation

08.0671.14

Trim Frame

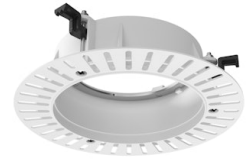


REQUIRED
Frame

Installation

08.0671.40

Trim Frame

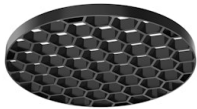


REQUIRED
Frame

Installation

08.0673.00

No Trim Frame



OPTIONAL
Accessory

Optical

08.0728.00

Honeycomb for Eclectic 90



OPTIONAL
Filter

Optical

08.0735.00

Colour Temperature Increasing Filter for Eclectic 90



OPTIONAL
Filter

Optical

08.0736.00

Colour Temperature Decreasing Filter for Eclectic 90

Spare Parts



| | |
|---|------------|
| Super Spot Lens for Eclectic 90 Power Led | 08.0718.00 |
| Spot Lens for Eclectic 90 Power Led | 08.0719.00 |
| Medium Lens for Eclectic 90 Power Led | 08.0720.00 |
| Cone Frontal for Eclectic 90 | 08.0724.14 |
| Cone Frontal for Eclectic 90 | 08.0724.40 |
| Soft Frontal for Eclectic 90 | 08.0725.14 |
| Soft Frontal for Eclectic 90 | 08.0725.40 |
| Flat Frontal for Eclectic 90 | 08.0726.14 |
| Flat Frontal for Eclectic 90 | 08.0726.40 |
| Module Fix for Eclectic 90 | 08.0741.00 |
| Module Adjustable for Eclectic 90 | 08.0742.00 |



08.0718.00
Super Spot Lens for Eclectic 90
Power Led



08.0719.00
Spot Lens for Eclectic 90 Power
Led



08.0720.00
Medium Lens for Eclectic 90
Power Led



08.0724.14
Cone Frontal for Eclectic 90



08.0724.40
Cone Frontal for Eclectic 90



08.0725.14
Soft Frontal for Eclectic 90



08.0725.40
Soft Frontal for Eclectic 90



08.0726.14
Flat Frontal for Eclectic 90



08.0726.40

Flat Frontal for Eclectic 90



08.0741.00

Module Fix for Eclectic 90



08.0742.00

Module Adjustable for Eclectic 90