

## Eclectic 90 Fixed Cone Led Array

Designed by FLOS Architectural, 2022

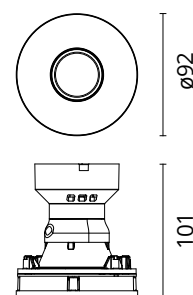


10.5W - 809lm - 2700K - CRI> 90 - Beam° 24

Eclectic Ø90. Non-adjustable Downlight. "Cone" style façade. Necessary installation pre-frames, not included (to be ordered separately). Recessed position of the LED: 41° cut-off angle. IP54 water tightness. Alternative options for lenses, orientation modules and style façades are available as spare parts.

Are you a professional and your project needs consulting and support?

BOOK AN APPOINTMENT



### Main specifications

|                        |                     |
|------------------------|---------------------|
| Mounting               | Ceiling recessed    |
| Environments           | Indoor dry location |
| Light source type      | LED                 |
| Light sources included | Yes                 |
| LED type               | LED array           |
| Number of lamps        | 1                   |
| Power (W)              | 10.5                |
| System power (W)       | 12.6                |
| Lumen Output (lm)      | 809                 |
| Efficacy (lm/W)        | 77                  |

### Physical

|                     |       |
|---------------------|-------|
| Colour              | Black |
| Orientation         | Fixed |
| Recessed depth (mm) | 114   |
| Spot diameter (mm)  | 95    |
| Length (mm)         | 95    |
| Net weight (kg)     | 0.29  |
| Package height (mm) | 157   |
| Package width (mm)  | 210   |
| Package length (mm) | 135   |
| IP internal         | 54    |

### Download

Mounting instructions [Download PDF](#)

### Photometric Files

LDT / IES [Download ZIP](#)

### Technical Drawings

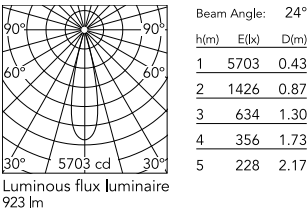
2D [Download ZIP](#)

3D [Download ZIP](#)

[Bim](#) [Download ZIP](#)



Schematic light drawing



Photometric

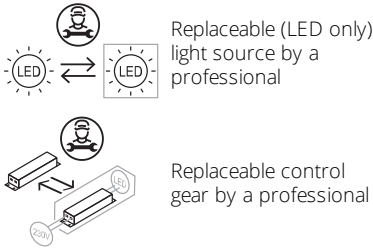
|                          |                        |
|--------------------------|------------------------|
| Lighting type            | Direct                 |
| Light distribution       | Symmetric              |
| CCT (K)                  | 2700                   |
| CRI>                     | 90                     |
| McAdam steps (SDCM)      | 2                      |
| Rf fidelity index        | 88                     |
| Rg gamut index           | 94                     |
| LED Life / Failure Ratio | L70B50>55.000h_Tc=85°C |
| Beam angle C0-180 (°)    | 24                     |
| Beam angle C90-270 (°)   | 24                     |
| UGR <sub>L</sub>         | <10                    |

Electrical

|                   |  |
|-------------------|--|
| Insulation class  | III  |
| LED current (mA)  | 300  |
| Power supply      | Remote   |
| Dimmable          | Yes  |
| Power supply type | Dimmable DALI 2,<br>Dimmable 0-10V,<br>Dimmable Casambi,<br>Dimmable Push,<br>Dimmable 1-10V,<br>Mains Cut Dimming |

Ecodesign and Energy Labelling

This product contains a light source of energy efficiency class E



Accessories & Power Supply



REQUIRED  
Power supply  
Electrical

60.9162  
Continuous current power supply  
220/240V - 50/60Hz. Adjustable  
Current 300mA-13W / 350mA-  
15W / 400mA-18W / 450mA-  
20W / 500mA-22W / 550mA-  
24W / 600mA-27W / 650mA-  
29W / 700mA-31W / 750mA-  
32W / 800mA-33W / 850mA-  
35W / 900mA-38W / 950mA-  
40W / 1000/1050mA-4...



REQUIRED  
Power supply  
Electrical

60.9160  
Non dimmable continuous  
current power supply of  
220/240V - 50/60Hz with power  
current selected through  
adjustable with switch 200 mA -  
8,5W / 250mA - 11W / 300 mA -  
13W / 350 mA - 15W / 400 mA -  
17,5W / 450 mA - 19,5W / 500  
mA - 22W



REQUIRED  
Power supply  
Electrical

60.9467  
20W Constant current power  
supply, AC phase-cut adjustable,  
trailing & leading edge dimming  
(mains dimming), 220/240V -  
50/60Hz, with dip-switch  
programmable power supply  
current. Output current: 900mA -  
20W / 850mA - 20W / 800mA -  
20W / 750mA - 20W / ...



REQUIRED  
Power supply  
Electrical

60.9208  
Continuous current power supply  
of 13-20W - Dim 1-10V&Push -  
110/240V - 50/60Hz with power  
current selected through  
adjustable



REQUIRED  
Power supply  
Electrical

60.9843



REQUIRED  
Power supply  
Electrical

60.9713.0300  
300mA, 20 W, 220/240 V - 50/60  
Hz constant current power  
supply. Dimmable by Dali2



REQUIRED  
Power supply  
Electrical

60.7678



REQUIRED  
Frame  
Installation

08.0671.14  
Trim Frame

Continuous current power supply  
20W, 220/240V - 50/60Hz with  
power current selected through  
adjustable switch. Dimmable 0-  
10V/PWM/RX. Output current:  
500mA - 21W / 450mA - 19W /  
400mA - 17W / 350mA - 15W /  
300mA - 12W / 250mA - 10W.

Continuous current supply  
source of 240V - 50/60Hz with  
dimmable Dali 2, Push dimming.  
150mA - 7.8W / 200mA - 10.4W /  
250mA - 13W / 300mA - 15.6W /  
350mA - 18.2W / 400mA - 20.8W  
/ 500mA - 26W / 600mA - 31.2W  
/ 700mA - 36.4W / 750mA - 39W  
/ 800mA - 41.6...

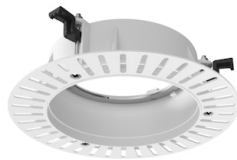


REQUIRED  
Frame

Installation

08.0671.40

Trim Frame



REQUIRED  
Frame

Installation

08.0673.00

No Trim Frame

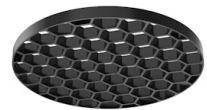


REQUIRED  
Power supply

Electrical

60.7785

Constant current power supply  
42W, 220-240V CASAMBI  
dimmable.



OPTIONAL  
Accessory

Optical

08.0728.00

Honeycomb for Eclectic 90



OPTIONAL  
Filter

Optical

08.0735.00

Colour Temperature Increaser  
Filter for Eclectic 90



OPTIONAL  
Filter

Optical

08.0736.00

Colour Temperature Decreaser  
for Eclectic 90

Spare Parts

|  |   |            |
|--|---|------------|
|  | Spot Lens for Eclectic 90 Led Array       | 08.0714.00 |
|  | Medium Lens for Eclectic 90 Led Array     | 08.0715.00 |
|  | Flood Lens for Eclectic 90 Led Array      | 08.0716.00 |
|  | Wide Flood Lens for Eclectic 90 Led Array | 08.0717.00 |
|  | Cone Frontal for Eclectic 90              | 08.0724.14 |
|  | Cone Frontal for Eclectic 90              | 08.0724.40 |
|  | Soft Frontal for Eclectic 90              | 08.0725.14 |
|  | Soft Frontal for Eclectic 90              | 08.0725.40 |
|  | Flat Frontal for Eclectic 90              | 08.0726.14 |
|  | Flat Frontal for Eclectic 90              | 08.0726.40 |
|  | Module Fix for Eclectic 90                | 08.0741.00 |
|  | Module Adjustable for Eclectic 90         | 08.0742.00 |



08.0714.00  
Spot Lens for Eclectic 90 Led  
Array



08.0715.00  
Medium Lens for Eclectic 90 Led  
Array



08.0716.00  
Flood Lens for Eclectic 90 Led  
Array



08.0717.00  
Wide Flood Lens for Eclectic 90  
Led Array



08.0724.14  
Cone Frontal for Eclectic 90



08.0724.40  
Cone Frontal for Eclectic 90



08.0725.14  
Soft Frontal for Eclectic 90



08.0725.40  
Soft Frontal for Eclectic 90



08.0726.14

Flat Frontal for Eclectic 90



08.0726.40

Flat Frontal for Eclectic 90



08.0741.00

Module Fix for Eclectic 90



08.0742.00

Module Adjustable for Eclectic 90