

# FLOS

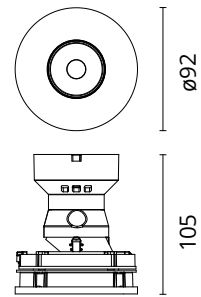
05.8226.14 Black

## Eclectic 90 Adjustable Flat Power Led

Designed by FLOS Architectural, 2022



Eclectic Ø90. Adjustable Downlight (40° tilt, 360° rotation). "Flat" style façade. Necessary installation pre-frames, not included (to be ordered separately). Recessed position of the LED: 49° cut-off angle. IP20 water tightness (for IP54, please ask the dedicated accessory). Power LED light source\*. Alternative options for lenses, orientation modules and style façades are available as spare parts.



Are you a professional and your project needs consulting and support?

BOOK AN APPOINTMENT

### Main specifications

Mounting	Ceiling recessed
Environments	Indoor dry location
Light source type	LED
Light sources included	Yes
LED type	Power LED
Number of lamps	1
Power (W)	7
System power (W)	9.3
Lumen Output (lm)	357
Efficacy (lm/W)	51

### Physical

Colour	Black
Orientation	Adjustable
Recessed depth (mm)	114
Spot diameter (mm)	95
Length (mm)	95
Net weight (kg)	0.28
Package height (mm)	157
Package width (mm)	210
Package length (mm)	135
IP internal	20

### Download

Mounting instructions [↓ PDF](#)

### Photometric Files

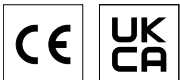
LDT / IES [↓ ZIP](#)

### Technical Drawings

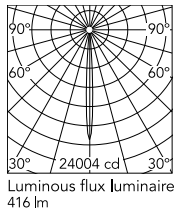
2D [↓ ZIP](#)

3D [↓ ZIP](#)

[Bim](#) [↓ ZIP](#)



## Schematic light drawing



Beam Angle: 7°

h(m)	E(lx)	D(m)
1	24004	0.12
2	6001	0.23
3	2667	0.35
4	1500	0.47
5	960	0.58

## Photometric

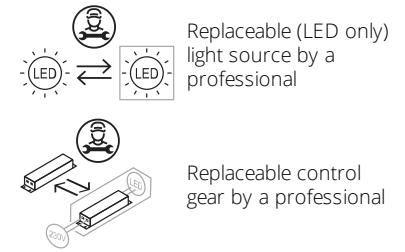
Lighting type	Direct
Light distribution	Symmetric
CCT (K)	2700
CRI>	90
McAdam steps (SDCM)	2
Rf fidelity index	88
Rg gamut index	94
LED Life / Failure Ratio	L90B50>60.000h_Tc=85°C
Beam angle C0-180 (°)	7
Beam angle C90-270 (°)	7
UGR <sub>L</sub>	<10

## Electrical

Insulation class	III
LED current (mA)	600
Power supply	Remote
Dimmable	Yes
Power supply type	Dimmable DALI 2, Dimmable 0-10V, Dimmable Casambi, Dimmable Push, Dimmable 1-10V, Mains Cut Dimming

## Ecodesign and Energy Labelling

This product contains a light source of energy efficiency class F



## Notes

The combination of models using Power LED and Array LED light sources can lead to slight differences in the chromaticity of the light. It is recommended to use the same light source in shared spaces.

## Accessories & Power Supply



REQUIRED  
Power supply

Electrical

60.9162

Continuous current power supply 220/240V - 50/60Hz. Adjustable Current 300mA-13W / 350mA-15W / 400mA-18W / 450mA-20W / 500mA-22W / 550mA-24W / 600mA-27W / 650mA-29W / 700mA-31W / 750mA-32W / 800mA-33W / 850mA-35W / 900mA-38W / 950mA-40W / 1000/1050mA-4...



REQUIRED  
Power supply

Electrical

60.9592

Non dimmable continuous current power supply. 15-30W, 220/240V -50/60Hz with power current selected through adjustable switch. 350mA - 15W / 400mA - 17W / 450mA - 19W / 500mA - 22W / 550mA - 24W / 600mA - 26W / 650mA - 28W / 700mA - 30W.



REQUIRED  
Power supply

Electrical

60.9208

Continuous current power supply of 13-20W - Dim 1-10V&Push - 110/240V - 50/60Hz with power current selected through adjustable



REQUIRED  
Power supply

Electrical

60.9845

Continuous current power supply 40W, 220/240V - 50/60Hz with power current selected through adjustable switch. Dimmable 0-10V/PWM/RX. Output current: 1050mA - 40W / 1000mA - 40W / 950mA - 40W / 900mA - 37W / 850mA - 35W / 800mA - 33W / 750mA - 31W / 70...



REQUIRED  
Power supply

Electrical

60.9713.0600

600mA, 20 W, 220/240 V - 50/60 Hz constant current power supply. Dimmable by Dali2



REQUIRED  
Power supply

Electrical

60.7678



REQUIRED  
Frame

Installation

08.0671.14

Trim Frame



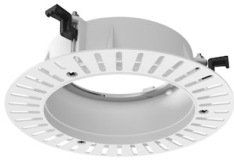
REQUIRED  
Frame

Installation

08.0671.40

Trim Frame

Continuous current supply  
source of 240V - 50/60Hz with  
dimmable Dali 2, Push dimming.  
150mA - 7.8W / 200mA - 10.4W /  
250mA - 13W / 300mA - 15.6W /  
350mA - 18.2W / 400mA - 20.8W  
/ 500mA - 26W / 600mA - 31.2W  
/ 700mA - 36.4W / 750mA - 39W  
/ 800mA - 41.6...



REQUIRED  
Frame

Installation

08.0673.00

No Trim Frame



REQUIRED  
Power supply

Electrical

60.7785

Constant current power supply  
42W, 220-240V CASAMBI  
dimnable.

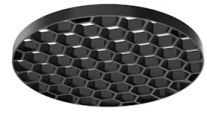


REQUIRED  
Power supply

Electrical

60.9467

Mains dimming 20W Constant  
current power supply, AC phase-  
cut adjustable, trailing & leading  
edge dimming, 220/240V -  
50/60Hz, with dip-switch  
programmable power supply  
current. Output current: 900mA -  
20W / 850mA - 20W / 800mA -  
20W / 750mA - 20W / 70...



OPTIONAL  
Accessory

Optical

08.0728.00

Honeycomb for Eclectic 90



OPTIONAL  
Accessory

Installation

08.0730.00

IP54 Lens for Eclectic 90  
Adjustable



OPTIONAL  
Filter

Optical

08.0735.00

Colour Temperature Increaser  
Filter for Eclectic 90



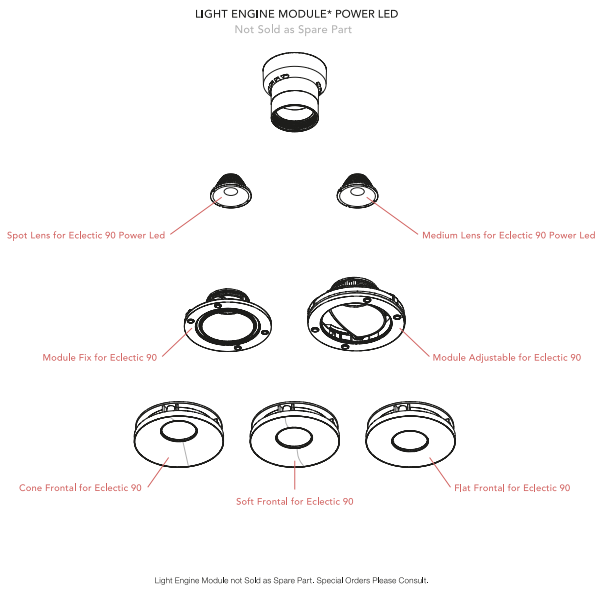
OPTIONAL  
Filter

Optical

08.0736.00

Colour Temperature Decreaser  
for Eclectic 90

## Spare Parts



Super Spot Lens for Eclectic 90 Power Led	08.0718.00
Spot Lens for Eclectic 90 Power Led	08.0719.00
Medium Lens for Eclectic 90 Power Led	08.0720.00
Cone Frontal for Eclectic 90	08.0724.14
Cone Frontal for Eclectic 90	08.0724.40
Soft Frontal for Eclectic 90	08.0725.14
Soft Frontal for Eclectic 90	08.0725.40
Flat Frontal for Eclectic 90	08.0726.14
Flat Frontal for Eclectic 90	08.0726.40
Module Fix for Eclectic 90	08.0741.00
Module Adjustable for Eclectic 90	08.0742.00



08.0718.00  
Super Spot Lens for Eclectic 90  
Power Led



08.0719.00  
Spot Lens for Eclectic 90 Power  
Led



08.0720.00  
Medium Lens for Eclectic 90  
Power Led



08.0724.14  
Cone Frontal for Eclectic 90



08.0724.40  
Cone Frontal for Eclectic 90



08.0725.14  
Soft Frontal for Eclectic 90



08.0725.40  
Soft Frontal for Eclectic 90



08.0726.14  
Flat Frontal for Eclectic 90



08.0726.40

Flat Frontal for Eclectic 90



08.0741.00

Module Fix for Eclectic 90



08.0742.00

Module Adjustable for Eclectic 90