

05.8162.40 White

## Eclectic 90 Adjustable Cone Led Array

Designed by FLOS Architectural, 2022

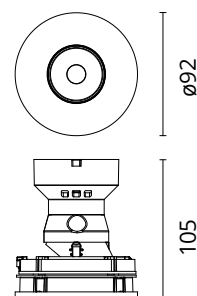


10.5W - 945lm - 3000K - CRI> 90 - Beam° 33

Eclectic Ø90. Adjustable Downlight (40° tilt, 360° rotation). "Cone" style façade. Necessary installation pre-frames, not included (to be ordered separately). Recessed position of the LED: 41° cut-off angle. IP20 water tightness (for IP54, please ask the dedicated accessory). Alternative options for lenses, orientation modules and style façades are available as spare parts.

Are you a professional and your project needs consulting and support?

BOOK AN APPOINTMENT



### Main specifications

Mounting	Ceiling recessed
Environments	Indoor dry location
Light source type	LED
Light sources included	Yes
LED type	LED array
Number of lamps	1
Power (W)	10.5
System power (W)	12.6
Lumen Output (lm)	945
Efficacy (lm/W)	90

### Physical

Colour	White
Orientation	Adjustable
Recessed depth (mm)	114
Spot diameter (mm)	95
Length (mm)	95
Net weight (kg)	0.29
Package height (mm)	157
Package width (mm)	210
Package length (mm)	135
IP internal	20

### Download

Mounting instructions [↓ PDF](#)

### Photometric Files

LDT / IES [↓ ZIP](#)

### Technical Drawings

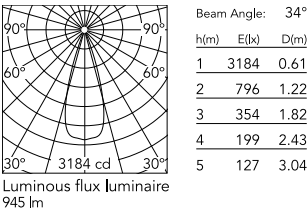
2D [↓ ZIP](#)

3D [↓ ZIP](#)

[Bim](#) [↓ ZIP](#)



Schematic light drawing



Photometric

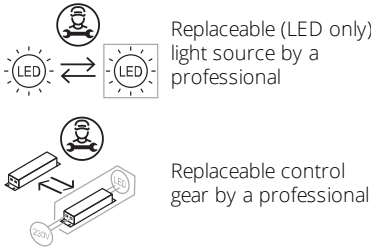
Lighting type	Direct
Light distribution	Symmetric
CCT (K)	3000
CRI>	90
McAdam steps (SDCM)	2
Rf fidelity index	92
Rg gamut index	98
LED Life / Failure Ratio	L70B50>55.000h_Tc=85°C
Beam angle C0-180 (°)	33
Beam angle C90-270 (°)	33
UGR <sub>L</sub>	<10

Electrical

Insulation class	III
LED current (mA)	300
Power supply	Remote
Dimmable	Yes
Power supply type	Dimmable DALI 2, Dimmable 0-10V, Dimmable Casambi, Dimmable Push, Dimmable 1-10V, Mains Cut Dimming

Ecodesign and Energy Labelling

This product contains a light source of energy efficiency class E



Accessories & Power Supply



REQUIRED  
Power supply  
Electrical

60.9162  
Continuous current power supply  
220/240V - 50/60Hz. Adjustable  
Current 300mA-13W / 350mA-  
15W / 400mA-18W / 450mA-  
20W / 500mA-22W / 550mA-  
24W / 600mA-27W / 650mA-  
29W / 700mA-31W / 750mA-  
32W / 800mA-33W / 850mA-  
35W / 900mA-38W / 950mA-  
40W / 1000/1050mA-4...



REQUIRED  
Power supply  
Electrical

60.9160  
Non dimmable continuous  
current power supply of  
220/240V - 50/60Hz with power  
current selected through  
adjustable with switch 200 mA -  
8,5W / 250mA - 11W / 300 mA -  
13W / 350 mA - 15W / 400 mA -  
17,5W / 450 mA - 19,5W / 500  
mA - 22W



REQUIRED  
Power supply  
Electrical

60.9208  
Continuous current power supply  
of 13-20W - Dim 1-10V&Push -  
110/240V - 50/60Hz with power  
current selected through  
adjustable



REQUIRED  
Power supply  
Electrical

60.9843  
Continuous current power supply  
20W, 220/240V - 50/60Hz with  
power current selected through  
adjustable switch. Dimmable 0-  
10V/PWM/RX. Output current:  
500mA - 21W / 450mA - 19W /  
400mA - 17W / 350mA - 15W /  
300mA - 12W / 250mA - 10W.



REQUIRED  
Power supply  
Electrical

60.9713.0300  
300mA, 20 W, 220/240 V - 50/60  
Hz constant current power  
supply. Dimmable by Dali2



REQUIRED  
Power supply  
Electrical

60.7678



REQUIRED  
Frame  
Installation

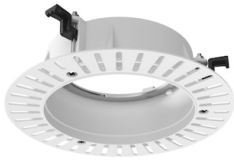
08.0671.14  
Trim Frame



REQUIRED  
Frame  
Installation

08.0671.40  
Trim Frame

Continuous current supply  
source of 240V - 50/60Hz with  
dimnable Dali 2, Push dimming.  
150mA - 7.8W / 200mA - 10.4W /  
250mA - 13W / 300mA - 15.6W /  
350mA - 18.2W / 400mA - 20.8W  
/ 500mA - 26W / 600mA - 31.2W  
/ 700mA - 36.4W / 750mA - 39W  
/ 800mA - 41.6...



REQUIRED  
Frame

Installation

08.0673.00

No Trim Frame



REQUIRED  
Power supply

Electrical

60.7785

Constant current power supply  
42W, 220-240V CASAMBI  
dimnable.

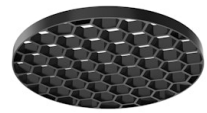


REQUIRED  
Power supply

Electrical

60.9467

Mains dimming 20W Constant  
current power supply, AC phase-  
cut adjustable, trailing & leading  
edge dimming, 220/240V -  
50/60Hz, with dip-switch  
programmable power supply  
current. Output current: 900mA -  
20W / 850mA - 20W / 800mA -  
20W / 750mA - 20W / 70...



OPTIONAL  
Accessory

Optical

08.0728.00

Honeycomb for Eclectic 90



OPTIONAL  
Accessory

Installation

08.0730.00

IP54 Lens for Eclectic 90  
Adjustable



OPTIONAL  
Filter

Optical

08.0735.00

Colour Temperature Increaser  
Filter for Eclectic 90



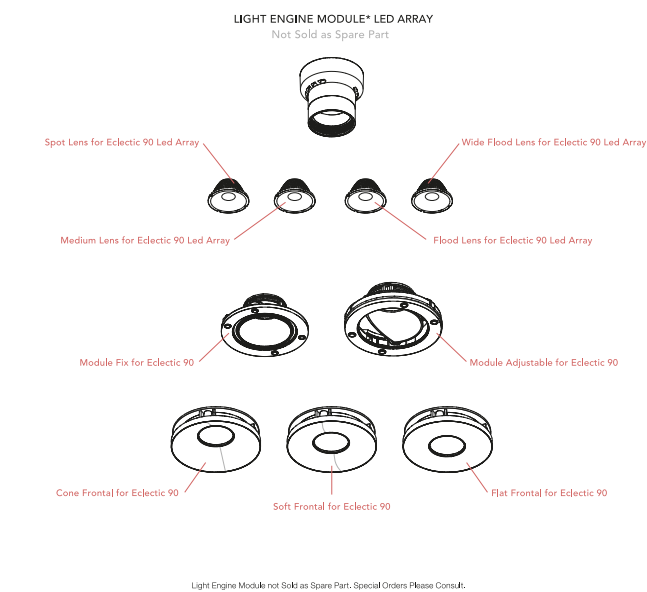
OPTIONAL  
Filter

Optical

08.0736.00

Colour Temperature Decreaser  
for Eclectic 90

Spare Parts



.	Spot Lens for Eclectic 90 Led Array	08.0714.00
.	Medium Lens for Eclectic 90 Led Array	08.0715.00
.	Flood Lens for Eclectic 90 Led Array	08.0716.00
.	Wide Flood Lens for Eclectic 90 Led Array	08.0717.00
.	Cone Frontal for Eclectic 90	08.0724.14
.	Cone Frontal for Eclectic 90	08.0724.40
.	Soft Frontal for Eclectic 90	08.0725.14
.	Soft Frontal for Eclectic 90	08.0725.40
.	Flat Frontal for Eclectic 90	08.0726.14
.	Flat Frontal for Eclectic 90	08.0726.40
.	Module Fix for Eclectic 90	08.0741.00
.	Module Adjustable for Eclectic 90	08.0742.00



08.0714.00  
Spot Lens for Eclectic 90 Led  
Array



08.0715.00  
Medium Lens for Eclectic 90 Led  
Array



08.0716.00  
Flood Lens for Eclectic 90 Led  
Array



08.0717.00  
Wide Flood Lens for Eclectic 90  
Led Array



08.0724.14  
Cone Frontal for Eclectic 90



08.0724.40  
Cone Frontal for Eclectic 90



08.0725.14  
Soft Frontal for Eclectic 90



08.0725.40  
Soft Frontal for Eclectic 90



08.0726.14

Flat Frontal for Eclectic 90



08.0726.40

Flat Frontal for Eclectic 90



08.0741.00

Module Fix for Eclectic 90



08.0742.00

Module Adjustable for Eclectic 90