

# FLOS

05.8020.14 Black

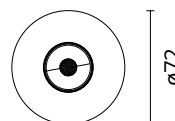
## Eclectic 70 Adjustable Cone

Designed by FLOS Architectural, 2022

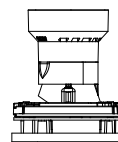


7.5W - 411lm - 2700K - CRI> 90 - Beam° 15

Eclectic Ø70. Adjustable Downlight (35° tilt, 360° rotation). "Cone" style façade. Necessary installation pre-frames, not included (to be ordered separately). Recessed position of the LED: 47° cut-off angle. IP20 water tightness (for IP54, please ask the dedicated accessory). Alternative options for lenses, orientation modules and style façades are available as spare parts.



Ø72



83

Are you a professional and your project needs consulting and support?

BOOK AN APPOINTMENT

### Main specifications

Mounting	Ceiling recessed
Environments	Indoor dry location
Light source type	LED
Light sources included	Yes
LED type	LED array
Number of lamps	1
Power (W)	7.5
System power (W)	9.9
Lumen Output (lm)	411
Efficacy (lm/W)	55

### Physical

Colour	Black
Orientation	Adjustable
Recessed depth (mm)	134
Spot diameter (mm)	75
Length (mm)	75
Net weight (kg)	0.16
Package height (mm)	90
Package width (mm)	140
Package length (mm)	105
IP internal	20

### Download

Mounting instructions [↓ PDF](#)

### Photometric Files

LDT / IES [↓ ZIP](#)

### Technical Drawings

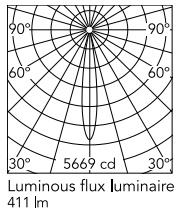
2D [↓ ZIP](#)

3D [↓ ZIP](#)

[Bim](#) [↓ ZIP](#)



## Schematic light drawing



Beam Angle: 15°

h(m)	E(lx)	D(m)
1	5669	0.26
2	1417	0.53
3	630	0.79
4	354	1.06
5	227	1.32

## Photometric

Lighting type	Direct
Light distribution	Symmetric
CCT (K)	2700
CRI>	90
McAdam steps (SDCM)	2
Rf fidelity index	88
Rg gamut index	94
LED Life / Failure Ratio	L70B50>55.000h_Tc=85°C
Beam angle C0-180 (°)	15
Beam angle C90-270 (°)	15
UGR <sub>L</sub>	<10

## Electrical

Insulation class	III
LED current (mA)	600
Power supply	Remote
Dimmable	Yes
Power supply type	Dimmable DALI 2, Dimmable 0-10V, Dimmable Casambi, Dimmable Push, Dimmable 1-10V, Mains Cut Dimming

## Ecodesign and Energy Labelling

This product contains a light source of energy efficiency class F



## Accessories & Power Supply



REQUIRED  
Power supply

Electrical

60.9162

Continuous current power supply 220/240V - 50/60Hz. Adjustable Current 300mA-13W / 350mA-15W / 400mA-18W / 450mA-20W / 500mA-22W / 550mA-24W / 600mA-27W / 650mA-29W / 700mA-31W / 750mA-32W / 800mA-33W / 850mA-35W / 900mA-38W / 950mA-40W / 1000/1050mA-4...



REQUIRED  
Power supply

Electrical

60.9592

Non dimmable continuous current power supply. 15-30W, 220/240V -50/60Hz with power current selected through adjustable switch. 350mA - 15W / 400mA - 17W / 450mA - 19W / 500mA - 22W / 550mA - 24W / 600mA - 26W / 650mA - 28W / 700mA - 30W.



REQUIRED  
Power supply

Electrical

60.9208

Continuous current power supply of 13-20W - Dim 1-10V&Push - 110/240V - 50/60Hz with power current selected through adjustable



REQUIRED  
Power supply

Electrical

60.9845

Continuous current power supply 40W, 220/240V - 50/60Hz with power current selected through adjustable switch. Dimmable 0-10V/PWM/RX. Output current: 1050mA - 40W / 1000mA - 40W / 950mA - 40W / 900mA - 37W / 850mA - 35W / 800mA - 33W / 750mA - 31W / 70...



REQUIRED  
Power supply

Electrical

60.9713.0600

600mA, 20 W, 220/240 V - 50/60 Hz constant current power supply. Dimmable by Dali2



REQUIRED  
Power supply

Electrical

60.7678



REQUIRED  
Frame

Installation

08.0670.14

Trim Frame



REQUIRED  
Frame

Installation

08.0670.40

Trim Frame

Continuous current supply  
source of 240V - 50/60Hz with  
dimmable Dali 2, Push dimming.  
150mA - 7.8W / 200mA - 10.4W /  
250mA - 13W / 300mA - 15.6W /  
350mA - 18.2W / 400mA - 20.8W  
/ 500mA - 26W / 600mA - 31.2W  
/ 700mA - 36.4W / 750mA - 39W  
/ 800mA - 41.6...



REQUIRED  
Frame

Installation

08.0672.00

No Trim Frame



REQUIRED  
Power supply

Electrical

60.7785

Constant current power supply  
42W, 220–240V CASAMBI  
dimnable.



REQUIRED  
Power supply

Electrical

60.9467

Mains dimming 20W Constant  
current power supply, AC phase-  
cut adjustable, trailing & leading  
edge dimming, 220/240V -  
50/60Hz, with dip-switch  
programmable power supply  
current. Output current: 900mA -  
20W / 850mA - 20W / 800mA -  
20W / 750mA - 20W / 70...



OPTIONAL  
Accessory

Optical

08.0727.00

Honeycomb for Eclectic 70



OPTIONAL  
Accessory

Installation

08.0729.00

IP54 Lens for Eclectic 70  
Adjustable



OPTIONAL  
Filter

Optical

08.0731.00

Colour Temperature Increaser for  
Eclectic 70



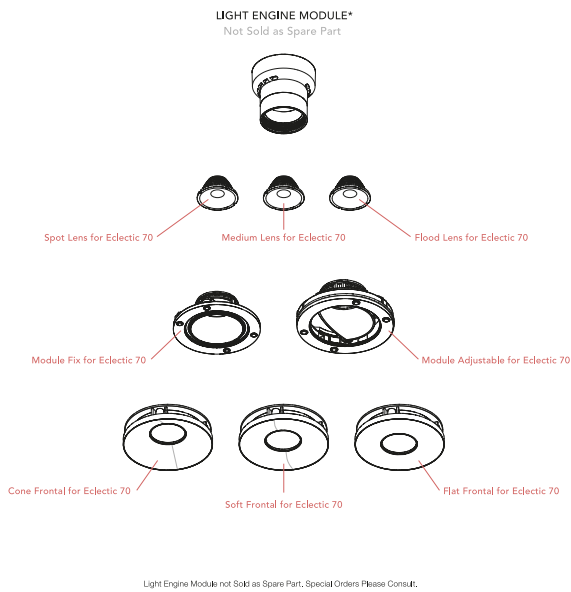
OPTIONAL  
Filter

Optical

08.0732.00

Colour Temperature Decreaser  
for Eclectic 70

## Spare Parts



Spot Lens for Eclectic 70	08.0711.00
Medium Lens for Eclectic 70	08.0712.00
Flood Lens for Eclectic 70	08.0713.00
Cone Frontal for Eclectic 70	08.0721.14
Cone Frontal for Eclectic 70	08.0721.40
Soft Frontal for Eclectic 70	08.0722.14
Soft Frontal for Eclectic 70	08.0722.40
Flat Frontal for Eclectic 70	08.0723.14
Flat Frontal for Eclectic 70	08.0723.40
Module Fix for Eclectic 70	08.0739.00
Module Adjustable for Eclectic 70	08.0740.00



08.0711.00

Spot Lens for Eclectic 70



08.0712.00

Medium Lens for Eclectic 70



08.0713.00

Flood Lens for Eclectic 70



08.0721.14

Cone Frontal for Eclectic 70



08.0721.40

Cone Frontal for Eclectic 70



08.0722.14

Soft Frontal for Eclectic 70



08.0722.40

Soft Frontal for Eclectic 70



08.0723.14

Flat Frontal for Eclectic 70



08.0723.40

Flat Frontal for Eclectic 70



08.0739.00

Module Fix for Eclectic 70



08.0740.00

Module Adjustable for Eclectic 70