

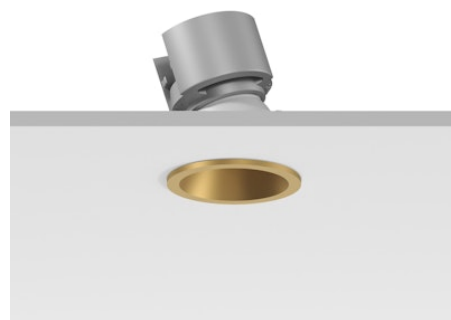
FLOS

05.7610.GLA Gold

Easy Kap Ø30 Adjustable

Designed by FLOS Architectural, 2023

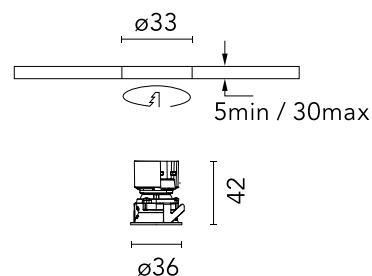
LED - Power LED - 3W - 201lm - 2700K - CRI> 90 - Beam° 19



Recessed luminaire with LED light source. Power supply not included. Installation frame not required.

Are you a professional and your project needs consulting and support?

[BOOK AN APPOINTMENT](#)



Main specifications

Mounting	Ceiling recessed
Light source type	LED
Light sources included	Yes
LED type	Power LED
Lamp category	LED
Number of lamps	1
Power (W)	3
System power (W)	4.7
Source flux (lm)	222
Lumen Output (lm)	201

Physical

Colour	Gold
Trim	Yes
Orientation	Adjustable
Longitudinal tilting (°)	17
Transversal tilting (°)	17
Recessed depth (mm)	54
Length (mm)	37
Net weight (kg)	0.04
Package height (mm)	70
Package width (mm)	61
Package length (mm)	85
IP internal	20
IP external	54

Download

Mounting instructions [↓ PDF](#)

Photometric Files

LDT / IES [↓ ZIP](#)

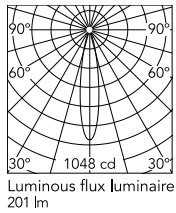
Technical Drawings

2D [↓ ZIP](#)

3D [↓ ZIP](#)



Schematic light drawing



Beam Angle: 19°

h(m)	E(lx)	D(m)
1	1048	0.34
2	262	0.69
3	116	1.03
4	66	1.37
5	42	1.71

1048 cd
Luminous flux Luminaire
201 lm

Photometric

Lighting type	Direct
Light distribution	Symmetric
CCT (K)	2700
CRI>	90
McAdam steps (SDCM)	3
Rf fidelity index	89
Rg gamut index	101
LED Life / Failure Ratio	L90B50>51.000h_Tc85°C
Beam angle C0-180 (°)	19
Beam angle C90-270 (°)	19
Extreme cut off	No
UGR _L	<10

Electrical

Insulation class	III
Forward voltage (V)	3.3
LED current (mA)	900
Power supply	Remote excluded
Power supply type	Non Dimmable, Dimmable DALI 2, Dimmable 1-10V, Mains Cut Dimming
Dimming interface	Remote Dimmable (Dimmer Not Included)

Ecodesign and Energy Labelling

This product contains a light source of energy efficiency class **G**



 ⚠ A: Driver pass-through		Recommended power supply		Serial Con.	⚠
 ⚠ B: Register for service operation is required	 POWER SUPPLY	Non Dimmable 220-240V 700mA	60.9988	1	A
		Non Dimmable 220-240V 900mA	60.9958	1 - 11	B
		Dali 2 220-240V 900mA	60.9602	1 - 5	B
		Dali 2 220-240V 900mA	60.9957	3 - 11	B
		1-10V 220-240V 900mA	60.9414	1 - 5	B
		1-10V 110-127 / 220-240 900mA	60.9208	2 - 5	B
		Casambi 220-240V 900mA	06.1974.00	1 - 5	B
		Mains Dimming 220-240V 900mA	60.9467	2 - 7	B
		Mains Dimming 220-240V 900mA	60.9692	4 - 9	B
		** Minimum embedding height 65mm only for 30mm ceiling thickness			