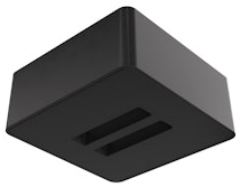


08.0195.00

Double Surface Feed Box
Designed by Ronan & Erwan Bouroullec



Driver not included.

Are you a professional and your project needs consulting and support?

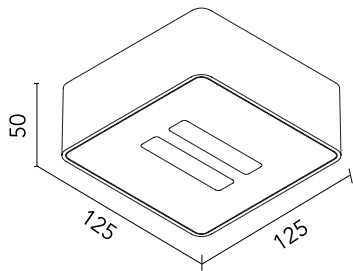
BOOK AN APPOINTMENT

Main specifications

| | |
|------------------------|-------------------------------|
| Mounting | Ceiling surface, Wall surface |
| Environments | Indoor dry location |
| Light sources included | no |

Physical

| | |
|---------------------|------|
| Net weight (kg) | 0.36 |
| Package height (mm) | 157 |
| Package width (mm) | 210 |
| Package length (mm) | 135 |
| IP internal | 20 |



Download

Mounting instructions



Photometric

Extreme cut off No

Notes

Driver not included.

Accessories & Power Supply



REQUIRED
Power supply
Electrical

60.9170
LED power supply source for
remote installation, 48V/120W.
220/240 Vac

REQUIRED
Power supply
Electrical

60.9607
LED power supply source for
remote installation, 110Vac-150W
/ 220Vac-200W