

FLOS

03.1258.ESB Brushed Bronze

C1 Mono Spot Ceiling Large Ø 56

UPGRADE

Designed by Vincent Van Duysen, 2021

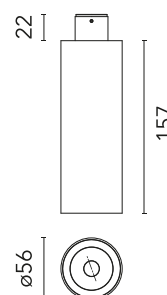


14W - 1146lm - 3000K - CRI> 90 - Beam° 45

Adjustable luminaire with LED for indoor use, suitable for wall installation. The body can be extracted from the installation surface for 60° orientation on the vertical axis and 180° on the horizontal axis. Integrated Full cut-off optical group. The remote power supply (not included) must be placed in an accessible location. The installation frame must be ordered separately.

Are you a professional and your project needs consulting and support?

BOOK AN APPOINTMENT



Main specifications

Mounting	Ceiling surface
Environments	Indoor dry location
Light source type	LED
Light sources included	Yes
LED type	Power LED
Power (W)	14
Source flux (lm)	1400
Lumen Output (lm)	1146

Physical

Colour	Brushed Bronze
Orientation	Adjustable
Rotation (°)	355
Longitudinal tilting (°)	60
Spot diameter (mm)	56
Net weight (kg)	0.46
IP internal	20

Download

Mounting instructions [↓ PDF](#)

Photometric Files

LDT / IES [↓ ZIP](#)

Technical Drawings

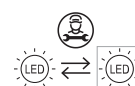
2D [↓ ZIP](#)

3D [↓ ZIP](#)

[Bim](#) [↓ ZIP](#)

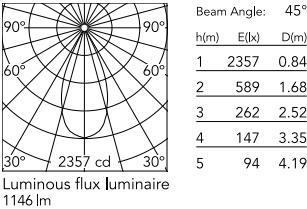


Ecodesign and Energy Labelling



Replaceable (LED only) light source by a professional

Schematic light drawing



Photometric

Lighting type	Direct
Light distribution	Symmetric
CCT (K)	3000
CRI>	90
Rf fidelity index	91
Rg gamut index	98
LED Life / Failure Ratio	L80B20 >36,000h (Tc=85°C)
Beam angle C0-180 (°)	45
Beam angle C90-270 (°)	45

Electrical

Insulation class	III
LED current (mA)	950-1200
Power supply	Remote excluded
Dimmable	Yes

Accessories & Power Supply



REQUIRED
Power supply
Electrical

60.9162
Continuous current power supply
220/240V - 50/60Hz. Adjustable
Current 300mA-13W / 350mA-
15W / 400mA-18W / 450mA-
20W / 500mA-22W / 550mA-
24W / 600mA-27W / 650mA-
29W / 700mA-31W / 750mA-
32W / 800mA-33W / 850mA-
35W / 900mA-38W / 950mA-
40W / 1000/1050mA-4...



REQUIRED
Power supply
Electrical

60.9276
Continuous current power supply
of 20-40W, DALI 2 110/240V -
50/60Hz. Power current selected
through adjustable 350mA-18,5W
/ 400mA-21W / 500mA-26,5W /
600mA-31,5W / 650mA-34,5W /
700mA-37W / 750mA-39,5W /
800 / 850 / 900 / 950 / 1000 /
1050 / 1200 mA...



REQUIRED
Power supply
Electrical

60.9439
Continuous current power
supply, 0/1-10V dimmable,
220/240V - 50/60Hz, 300mA-
16W / 350mA-18W / 400mA-
21W / 500mA-27W / 600mA-
32W / 650mA-35W /700 /750
/800 /900/ 950/ 1000 /1050mA-
36W



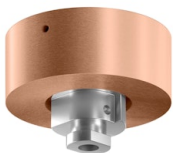
REQUIRED
Accessory
Installation

08.0212.DRA
Coated aluminum mount for
surface installation (ceiling)



REQUIRED
Accessory
Installation

08.0212.DYA
Coated aluminum mount for
surface installation (ceiling)



REQUIRED
Accessory
Installation

08.0212.EQA
Coated aluminum mount for
surface installation (ceiling)



REQUIRED
Accessory
Installation

08.0212.ERA
Coated aluminum mount for
surface installation (ceiling)



REQUIRED
Accessory
Installation

08.0212.ESA
Coated aluminum mount for
surface installation (ceiling)



REQUIRED Power supply

Electrical

60.7678

Continuous current supply source of 240V - 50/60Hz with dimmable Dali 2, Push dimming.
150mA - 7.8W / 200mA - 10.4W / 250mA - 13W / 300mA - 15.6W / 350mA - 18.2W / 400mA - 20.8W / 500mA - 26W / 600mA - 31.2W / 700mA - 36.4W / 750mA - 39W / 800mA - 41.6...



REQUIRED Frame

08.0207.00A

No Trim installation frame for ceiling mounting



REQUIRED Power supply

Electrical

60.9207

Casambi continuous current power supply, dimmable
220/240V - 50/60Hz, 300mA - 16W / 350mA - 18,5W / 400mA - 21,5W / 450 mA - 24W / 500mA - 27W / 600mA - 32W / 650 mA - 35W / 700 mA - 36W /750 /800 /900 /1000 /1050 /1200 mA - 38W.



OPTIONAL Control interface

Electrical

60.9392

Casambi controller. Requires 1-10V or Dali driver. It must be ordered separately