

FLOS

03.1253.ERB Brushed Steel

C1 Mono Spot Ceiling Large Ø 56 UPGRADE

Designed by Vincent Van Duysen, 2021

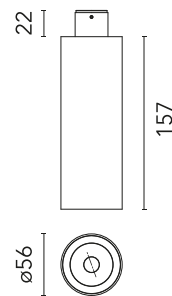


14W - 1063lm - 2700K - CRI> 90 - Beam° 45

Adjustable luminaire with LED for indoor use, suitable for wall installation. The body can be extracted from the installation surface for 60° orientation on the vertical axis and 180° on the horizontal axis. Integrated Full cut-off optical group. The remote power supply (not included) must be placed in an accessible location. The installation frame must be ordered separately.

Are you a professional and your project needs consulting and support?

[BOOK AN APPOINTMENT](#)



Main specifications

Mounting	Ceiling surface
Environments	Indoor dry location
Light source type	LED
Light sources included	Yes
LED type	Power LED
Power (W)	14
Source flux (lm)	1321
System flux (lm)	1063

Physical

Colour	Brushed Steel
Orientation	Adjustable
Rotation (°)	355
Longitudinal tilting (°)	60
Spot diameter (mm)	56
Net weight (kg)	0.46
IP internal	20

Download

Mounting instructions [↓ PDF](#)

Photometric Files

LDT / IES [↓ ZIP](#)

Technical Drawings

2D [↓ ZIP](#)

3D [↓ ZIP](#)

[Bim](#) [↓ ZIP](#)

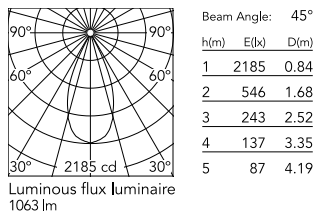


Ecodesign and Energy Labelling



Replaceable (LED only) light source by a professional

Schematic light drawing



Photometric

Lighting type	Direct
Light distribution	Symmetric
CCT (K)	2700
CRI>	90
Rf fidelity index	90
Rg gamut index	99
LED Life / Failure Ratio	L80B20 >36.000h (Tc=85°C)
Beam angle C0-180 (°)	45
Beam angle C90-270 (°)	45

Electrical

Insulation class	III
LED current (mA)	950-1200
Power supply	Remote excluded
Dimmable	Yes

Accessories & Power Supply



REQUIRED
Power supply

Electrical

60.9162

Continuous current power supply 220/240V - 50/60Hz. Adjustable Current 300mA-13W / 350mA-15W / 400mA-18W / 450mA-20W / 500mA-22W / 550mA-24W / 600mA-27W / 650mA-29W / 700mA-31W / 750mA-32W / 800mA-33W / 850mA-35W / 900mA-38W / 950mA-40W / 1000/1050mA-4...



REQUIRED
Power supply

Electrical

60.9276

Continuous current power supply of 20-40W, DALI 2 110/240V - 50/60Hz. Power current selected through adjustable 350mA-18,5W / 400mA-21W / 500mA-26,5W / 600mA-31,5W / 650mA-34,5W / 700mA-37W / 750mA-39,5W / 800 / 850 / 900 / 950 / 1000 / 1050 / 1200 mA...



REQUIRED
Power supply

Electrical

60.9207

Continuous current power supply, dimmable Casambi, 220/240V - 50/60Hz, 300mA - 16W / 350mA - 18,5W / 400mA - 21,5W / 450 mA - 24W / 500mA - 27W / 600mA - 32W / 650 mA - 35W / 700 mA - 36W /750 /800 /900 /1000 /1050 /1200 mA - 38W.



REQUIRED
Power supply

Electrical

60.9439

Continuous current power supply, 0/1-10V dimmable, 220/240V - 50/60Hz, 300mA-16W / 350mA-18W / 400mA-21W / 500mA-27W / 600mA-32W / 650mA-35W /700 /750 /800 /900/ 950/ 1000 /1050mA-36W



REQUIRED
Frame

08.0207.00A

No Trim installation frame for ceiling mounting



REQUIRED
Accessory

Installation

08.0212.DRA

Coated aluminum mount for surface installation (ceiling)

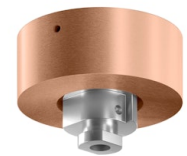


REQUIRED
Accessory

Installation

08.0212.DYA

Coated aluminum mount for surface installation (ceiling)



REQUIRED
Accessory

Installation

08.0212.EQA

Coated aluminum mount for surface installation (ceiling)



REQUIRED
Accessory

Installation

08.0212.ERA

Coated aluminum mount for surface installation (ceiling)



REQUIRED
Accessory

Installation

08.0212.ESA

Coated aluminum mount for surface installation (ceiling)



REQUIRED
Power supply

Electrical

60.7678

Continuous current supply source of 240V - 50/60Hz with dimmable Dali 2, Push dimming.
150mA - 7.8W / 200mA - 10.4W / 250mA - 13W / 300mA - 15.6W / 350mA - 18.2W / 400mA - 20.8W / 500mA - 26W / 600mA - 31.2W / 700mA - 36.4W / 750mA - 39W / 800mA - 41.6...



OPTIONAL
Control interface

Electrical

60.9392

Casambi controller. Requires 1-10V or Dali driver. It must be ordered separately