

# FLOS

03.1253.DRB Anthracite

## C1 Mono Spot Ceiling Large Ø 56 UPGRADE

Designed by Vincent Van Duysen, 2020

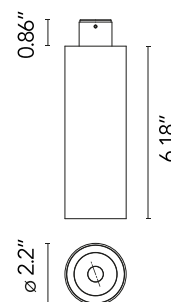


14W - 1063lm - 2700K - CRI> 90 - Beam° 45

Adjustable luminaire with LED for indoor use, suitable for wall installation. The body can be extracted from the installation surface for 60° orientation on the vertical axis and 180° on the horizontal axis. Integrated Full cut-off optical group. The remote power supply (not included) must be placed in an accessible location. The installation frame must be ordered separately.

Are you a professional and your project needs consulting and support?

[BOOK AN APPOINTMENT](#)



### Main specifications

|                        |                     |
|------------------------|---------------------|
| Mounting               | Ceiling surface     |
| Environments           | Indoor dry location |
| Light Source Type      | LED                 |
| Light sources included | Yes                 |
| LED type               | Power LED           |
| Power (W)              | 14                  |
| Source flux (lm)       | 1321                |
| System flux (lm)       | 1063                |

### Physical

|                          |            |
|--------------------------|------------|
| Color                    | Anthracite |
| Orientation              | Adjustable |
| Rotation (°)             | 355        |
| Longitudinal tilting (°) | 60         |
| IP internal              | 20         |

### Download

|                       |                     |
|-----------------------|---------------------|
| Family spec sheet     | <a href="#">ZIP</a> |
| Mounting instructions | <a href="#">PDF</a> |

### Photometric Files

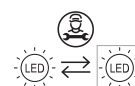
|           |                     |
|-----------|---------------------|
| LDT / IES | <a href="#">ZIP</a> |
|-----------|---------------------|

### Technical Drawings

|    |                     |
|----|---------------------|
| 2D | <a href="#">ZIP</a> |
| 3D | <a href="#">ZIP</a> |

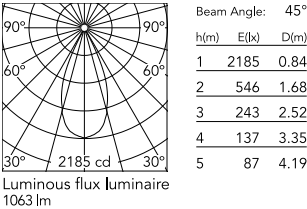


### Ecodesign and Energy Labelling



Replaceable (LED only)  
light source by a  
professional

Schematic light drawing



Photometric

|                          |                              |
|--------------------------|------------------------------|
| Lighting type            | Direct                       |
| Light distribution       | Symmetric                    |
| CCT (K)                  | 2700                         |
| CRI>                     | 90                           |
| Rf fidelity index        | 90                           |
| Rg gamut index           | 99                           |
| LED Life / Failure Ratio | L80B20 >36.000h<br>(Tc=85°C) |
| Beam angle C0-180 (°)    | 45                           |
| Beam angle C90-270 (°)   | 45                           |

Electrical

|                  |                 |
|------------------|-----------------|
| Insulation class | III             |
| LED current (mA) | 950-1200        |
| Driver           | Remote excluded |
| Dimmable         | Yes             |

Accessories & Power Supply



Ø 3.23"

REQUIRED  
Accessory

Installation

08.0207.00A9S

C1 Ceiling Large No Trim  
Installation Frame.



REQUIRED  
Accessory

Installation

08.0212.DYA9S

C1 Ceiling Large Surface Mounted  
Canopy



REQUIRED  
Accessory

Installation

08.0212.DRA9S

C1 Ceiling Large Surface Mounted  
Canopy



REQUIRED  
Accessory

Installation

08.0212.ERA9S

C1 Ceiling Large Surface Mounted  
Canopy

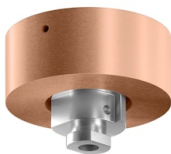


REQUIRED  
Accessory

Installation

08.0212.ESA9S

C1 Ceiling Large Surface Mounted  
Canopy

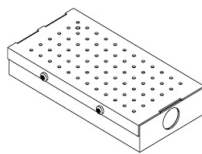


REQUIRED  
Accessory

Installation

08.0212.EQA9S

C1 Ceiling Large Surface Mounted  
Canopy

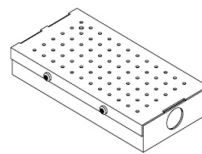


REQUIRED  
Power supply

Electrical

SP40W1200MA-10V-A01

Splice Box 40W, 1% dim, 0-10V,  
1200mA 120/277V.



REQUIRED  
Power supply

Electrical

SP20W1200MA-PEQ-S01

Lutron EcoSystem Splice Box  
20W, 1% dim, listed driver with  
enclosure, 1200mA 120/277V.