

FLOS

FU099535 Tomato

Bilboquet

Designed by Philippe Malouin, 2023

6W

LED bulb table lamp with adjustable head integrating bulb and cut-off providing direct lighting. Body made of a special pigmented polycarbonate deriving from a by-product of paper production rather than from petroleum. Adjustability through steel sphere treated with protective layer deposited in PVD. Useful length of the cable 2 mt. The cable can be adjusted and locked in place through a special slit in the base of the lamp. The product has been designed according to the ISCC standards and it is assembled with total absence of glued components so that it can be completely separated for future recyclability.

Are you a professional and your project needs consulting and support?

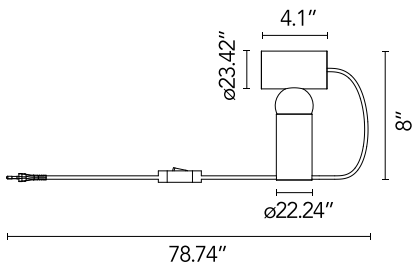
BOOK AN APPOINTMENT

Main specifications

EAN	8059607059234
Mounting	Table
Environments	Indoor dry location
Light Source Type	Bulb
Light sources included	No
Lamp holders	GU10
Number of lamps	1
Power (W)	6
System power (W)	6

Physical

Color	Tomato
Length (in)	4.09
Cord color	Tomato
Cord length (in)	78.740
Net weight (lb)	3.97
Package height (in)	3.74
Package width (in)	11.81
Package length (in)	14.96
Package volume (in)	660.89
IP internal	20



Download

Mounting instructions [Download PDF](#)

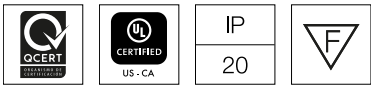
Photometric Files

LDT / IES [Download ZIP](#)

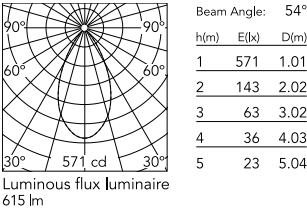
Technical Drawings

2D [Download ZIP](#)

3D [Download ZIP](#)



Schematic light drawing



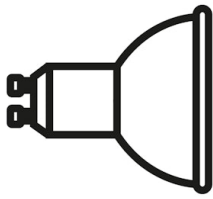
Photometric

Extreme cut off No

Electrical

Insulation class	II
Frequency (Hz)	60
Main voltage (Vac)	120
Dimmable	No
Dimming interface	Switch Integrated (Not Dimmable)
Plug type	Type A
Batteries inside	No

Bulbs



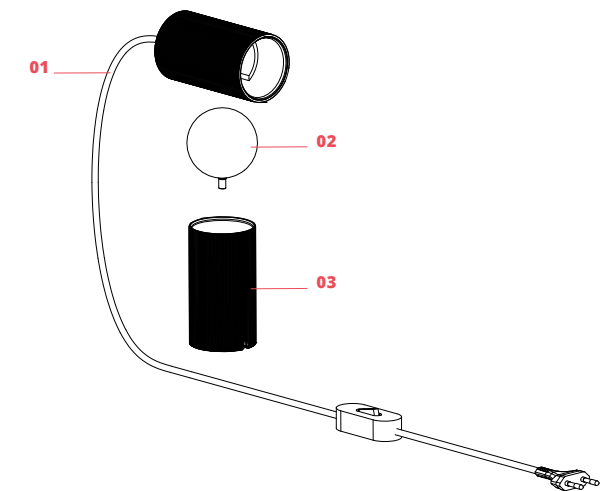
NOT INCLUDED

RF36658

LED Lamp 6,5W GU10 120V
2700K White

Spare Parts

- | | | |
|-----|---|-----------|
| 01. | Red electric mounting with On/Off switch and diffuser | RFU099035 |
| 02. | Sphere with pin | RF36760 |
| 03. | Red base assembly | RFU099135 |





RFU099035

Red electric mounting with On/Off switch and diffuser



RF36760

Sphere with pin



RFU099135

Red base assembly