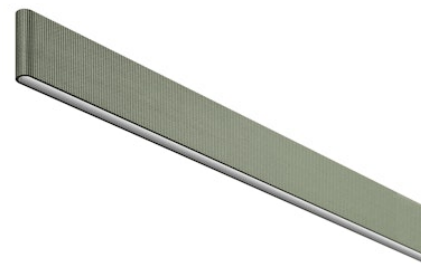


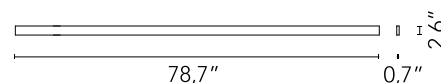
03.8500.GO.CB Grey Olive

## Belt Fabric L 2000 mm Casambi integrated

Designed by Ronan & Erwan Bouroullec



'Electromechanical profile for interior use with integrated linear lighting for suspended installation available with 78.75" or 118.12" lengths. Installation via suspension leather or fabric straps on the ceiling and remote power kit, to be ordered separately. Up&Down system controlled via DALI or CASAMBI individually and via 1-10V all together (Broadcast).



Are you a professional and your project needs consulting and support?

[BOOK AN APPOINTMENT](#)

### Main specifications

Mounting	Suspension
Environments	Indoor dry location
Light Source Type	LED
Light sources included	Yes
LED type	Top LED
Power (W)	55
System flux (lm)	1694

### Physical

Color	Grey Olive
Orientation	Fixed
Length (in)	78.75
Net weight (lb)	4.64
Package height (in)	5
Package width (in)	102.37
Package length (in)	5
IP internal	20

### Download

Family spec sheet	<a href="#">ZIP</a>
Mounting instructions	<a href="#">PDF</a>

### Photometric Files

LDT / IES	<a href="#">ZIP</a>
-----------	---------------------

### Technical Drawings

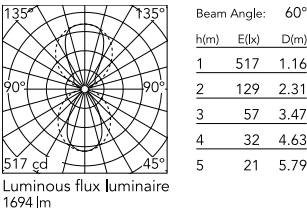
2D	<a href="#">ZIP</a>
3D	<a href="#">ZIP</a>



### Ecodesign and Energy Labelling



Schematic light drawing



Photometric

Lighting type	Indirect, Direct
Light distribution	Asymmetric
CCT (K)	2700
CRI>	95
McAdam steps (SDCM)	3
Beam angle C0-180 (°)	60
Beam angle C90-270 (°)	100
Beam angle indirect C0-180 (°)	70
Beam angle indirect C90-270 (°)	90

Electrical

Insulation class	III
Forward voltage (V)	48
Driver	Remote excluded
Dimmable	Yes
Dimming type	Dimmable Casambi
Dimming interface	Remote Dimmable (Dimmer Not Included)

Notes

Power kit and suspension straps sold separately. For the sizing of the installation keep a safety margin of 15% of the maximum power of the LED power source.

Accessories & Power Supply



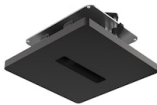
REQUIRED  
Power supply

LEDSB60W48V-NDM-D01  
LED Driver, 48VDC, 60W, Non-Dimming, 120-277V



REQUIRED  
Power supply

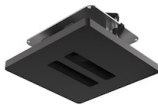
LEDSB96W48V-NDM-D01  
LED Driver, 48VDC, 96W, Non-Dimming, 120-277V



REQUIRED  
Accessory

Installation

08.0180.00  
Individual Ceiling Feed Box



REQUIRED  
Accessory

Installation

08.0181.00  
Double Ceiling Feed Box



REQUIRED  
Accessory

Installation

08.0182.00  
Wall Mounted Feed Box



REQUIRED  
Accessory

Installation

03.8510.GO  
Suspension strap L 1000 mm



REQUIRED  
Accessory

Installation

03.8511.GO  
Suspension strap L 2000 mm



REQUIRED  
Accessory

Installation

03.8512.GO  
Suspension strap L 3000 mm



REQUIRED  
Accessory

Installation

03.8513.GO

Suspension strap L 1500 mm



REQUIRED  
Accessory

Installation

03.8514.GO

Suspension strap L 2500 mm



REQUIRED  
Accessory

Installation

03.8520.GO

48-V Power Loop L 1500 mm



REQUIRED  
Accessory

Installation

03.8521.GO

48-V Power Loop L 2500 mm



REQUIRED  
Accessory

Installation

03.8522.GO

48-V Power Loop L 3500 mm