


# FLOS

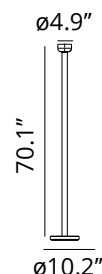
 F1070026 Cioko

## Bellhop Floor

Designed by Edward Barber and Jay Osgerby, 2020

26W - 1023lm - 2700K - CRI> 90

The Bellhop collection designed by Barber Osgerby expands with the introduction of an eccentric up-lit floor lamp. Originating from the Bellhop table lamp design, the designers have flipped the arched diffuser upside down and elongated the body to nearly 6ft high. Bellhop Floor is constructed from painted glass, aluminum, and an eco-friendly concrete base. Finishes: Floor Lamp Body /Diffuser Combo Brown Body / White Diffuser Green Body / White Diffuser Red Body / White Diffuser White Body / Grey Diffuser "Following the Bellhop portable and outdoor lamps, we decided to work on a floor-standing version, one that fits the collection but gives a totally different quality of light. While table lamps are often discreet and offer direct lighting, the new Bellhop Floor has a more sculptural character." - Edward Barber & Jay Osgerby



Are you a professional and your project needs consulting and support?

[BOOK AN APPOINTMENT](#)

### Main specifications

EAN	8059607039700
Mounting	Floor
Environments	Indoor dry location
Light Source Type	LED
Light sources included	Yes
LED type	LED array
Power (W)	26
System power (W)	26
System flux (lm)	1023

### Physical

Color	Cioko
Length (in)	10.24
Cord color	Black
Cord length (in)	106.299
Net weight (lb)	21.66
Package volume (in)	2797.58
IP internal	20

### Download

<a href="#">Mounting instructions</a>	<a href="#">Download PDF</a>
<a href="#">Mounting instructions</a>	<a href="#">Download PDF</a>

### Photometric Files

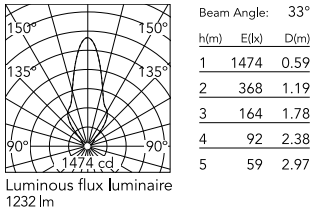
<a href="#">LDT / IES</a>	<a href="#">Download LDT</a>
---------------------------	------------------------------

### Technical Drawings

<a href="#">3D</a>	<a href="#">Download ZIP</a>
--------------------	------------------------------

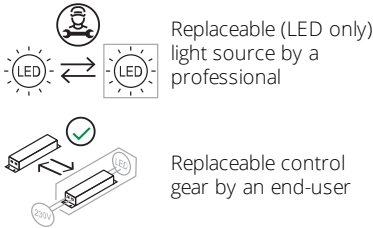


### Schematic light drawing



### Ecodesign and Energy Labelling

This product contains a light source of energy efficiency class **G**



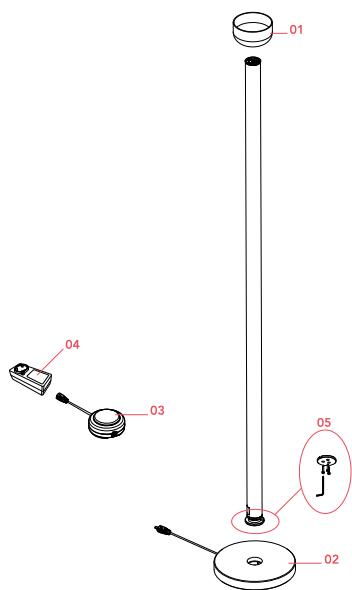
### Photometric

Lighting type	Indirect
Light distribution	Roto symmetric
CCT (K)	2700
CRI>	90
Extreme cut off	No

### Electrical

Insulation class	III
Frequency (Hz)	50/60
Main voltage (Vac)	100-240
LED current (mA)	700
Driver	Remote included
Dimmable	Yes
Dimming type	Electronic 48V
Dimming interface	Switch Integrated (Remote Dimmable)
Plug type	Type G, Type A, Type C
Batteries inside	No

Spare Parts

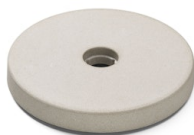


01.	Bellhop Floor Reflector White	F1073009
02.	Bellhop Floor Base Concrete	F1072009
03.	Bellhop Floor Switch Dimmer Assembly 700mA	RF30216
04.	Black plug assembly kit & 48V driver	RF6600130
05.	Bellhop F Kit screws for base	RF1070100



F1073009

Bellhop Floor Reflector White



F1072009

Bellhop Floor Base Concrete



RF30216

Bellhop Floor Switch Dimmer  
Assembly 700mA



RF6600130

Black plug assembly kit & 48V  
driver



RF1070100

Bellhop F Kit screws for base