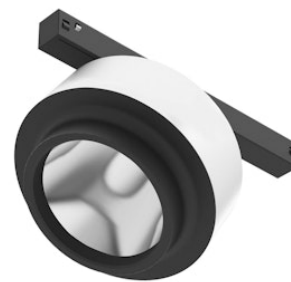


03.8025.40.1V White

Anthony Spot Track Dimmable 1-10V

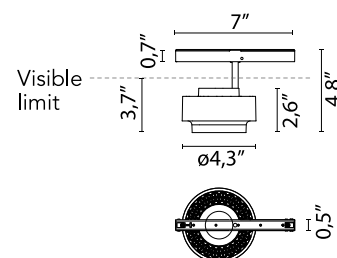
Designed by Antonio Citterio, 2018



Accent lighting LED module to be installed in The Tracking Magnet System. To obtain flood optics (35°) order Anthony Spot Medium + flood lens.

Are you a professional and your project needs consulting and support?

BOOK AN APPOINTMENT



Main specifications

Mounting	Track
Environments	Indoor dry location
Light Source Type	LED
Light sources included	Yes
LED type	LED array
Lamp category	LED
Number of lamps	1
Power (W)	16.5
System power (W)	17.6
Source flux (lm)	1620
System flux (lm)	1241
Efficacy (lm/W)	70.51

Physical

Color	White
Trim	No
Orientation	Adjustable
Rotation (°)	360
Longitudinal tilting (°)	90
Length (in)	7
Net weight (lb)	0.95
IP internal	20
IP external	20

Download

Family spec sheet	ZIP
Mounting instructions	PDF

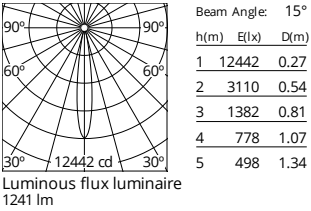
Photometric Files

LDT / IES	ZIP
-----------	-----

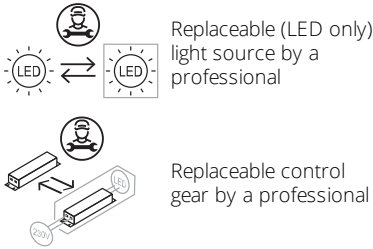
Technical Drawings

2D	ZIP
3D	ZIP

Schematic light drawing



Ecodesign and Energy Labelling



Photometric

Lighting type	Direct
Light distribution	Symmetric
CCT (K)	2700
CRI>	90
McAdam steps (SDCM)	2
LED Life / Failure Ratio	L80B50 > 50.000h (Tc=85°C)
Beam angle C0-180 (°)	15
Beam angle C90-270 (°)	15
UGR _L	<16

Electrical

Insulation class	III
Forward voltage (V)	48
LED current (mA)	450
Driver	Remote excluded
Dimmable	Yes
Dimming type	Dimmable 1-10V
Dimming range (%)	20-100
Dimming interface	Remote Dimmable (Dimmer Not Included)
Emergency type	No

Notes

Only compatible with 1-10V profile version. For wireless lighting control, choose integrated Casambi versions.

Accessories & Power Supply



OPTIONAL
Accessory

Optical

08.0050.00

Flood lens



OPTIONAL
Accessory

Optical

08.8418.68A

Elliptical lens



OPTIONAL
Accessory

Optical

08.8419.14A

Honeycomb