

# FLOS

FA53404756 Matte Stainless Steel

## A-Rise 290 High Emission

NEW

Designed by FLOS Outdoor

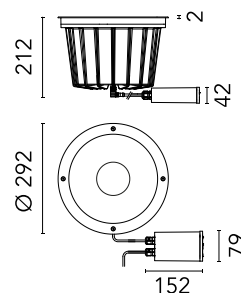


32W - 3411lm - 4000K - CRI> 80 - Beam° 40

LED light source included. Integrated 24V dc ON/OFF remote electric power supply. Adjustment on vertical axis: 15° max. Rotation on horizontal axis: 359° max. Remote power supply that must be placed in a junction box, equipped with a protruding, 400 mm cable with an M12 screw-on connector that guarantees the water tightness of the luminaire, and with a 250 mm cable for the connection to the power line. Extra clear transparent glass.

Are you a professional and your project needs consulting and support?

BOOK AN APPOINTMENT



### Main specifications

Mounting	Ground recessed
Environment	Outdoor wet location
LED type	LED array
Number of heads	1
Power (W)	32
System power (W)	38
Source flux (lm)	4496
System flux (lm)	3411

### Physical

Colour	Matte Stainless Steel
Orientation	Adjustable
Rotation (°)	359
Longitudinal tilting (°)	15
IP internal	66/67

### Download

Mounting instructions [ZIP](#)

### Photometric Files

LDT / IES [ZIP](#)

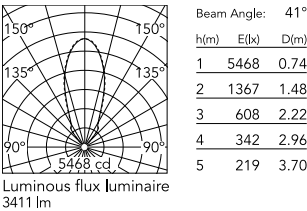
### Technical Drawings

2D [ZIP](#)

3D [ZIP](#)



Schematic light drawing



Photometric

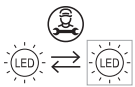
Lighting type	Direct
Light distribution	Symmetric
CCT (K)	4000
CRI>	80
Beam angle C0-180 (°)	40
Beam angle C90-270 (°)	40

Electrical

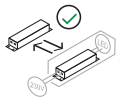
Insulation class	II
Frequency (Hz)	50-60
Main voltage (Vac)	220-240
Driver	Remote included
Dimmable	No
Dimming type	Non Dimmable
Emergency type	No

Ecodesign and Energy Labelling

This product contains a light source of energy efficiency class D



Replaceable (LED only) light source by a professional



Replaceable control gear by an end-user

Accessories & Power Supply



REQUIRED  
Accessory

F4599000

Box for installation



OPTIONAL  
Accessory

F990C00A000

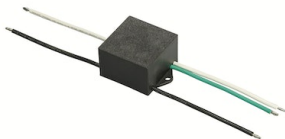
2 way terminal block 4 poles IP68  
H2O stop. (ø5,5÷12mm cable)



OPTIONAL  
Accessory

F990C010000

3/4 way terminal block 4 poles  
IP68 H2O stop. (ø5,5÷12mm  
cable)



OPTIONAL  
Accessory

F990E00A000

S.P.D. (SURGE PROTECTION  
DEVICE)