

FLOS

09.4442.30BDA White

UT Spot Track Ø 57 Dali Version

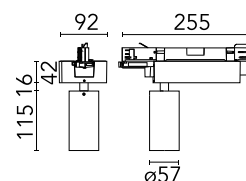
Designed by FLOS Architectural, 2017



Spotlight to be installed on 3-phase track. with LED light source. 220-240V, 50-60Hz power supply integrated.

Are you a professional and your project needs consulting and support?

[BOOK AN APPOINTMENT](#)



Main specifications

| | |
|------------------------|---------------------|
| Mounting | Track |
| Environments | Indoor dry location |
| Light source type | LED |
| Light sources included | Yes |
| LED type | LED array |
| Lamp category | LED |
| Number of lamps | 1 |
| Power (W) | 23.2 |
| System power (W) | 23.2 |
| Source flux (lm) | 2498.52 |
| Lumen Output (lm) | 1394 |

Physical

| | |
|--------------------------|------------|
| Colour | White |
| Trim | No |
| Orientation | Adjustable |
| Rotation (°) | 360 |
| Longitudinal tilting (°) | 90 |
| Spot diameter (mm) | 57 |
| Net weight (kg) | 0.57 |
| IP internal | 20 |
| IP external | 20 |

Download

[Mounting instructions](#)  ZIP

Photometric Files

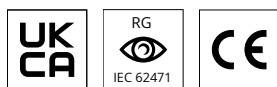
[LDT / IES](#)  ZIP

Technical Drawings

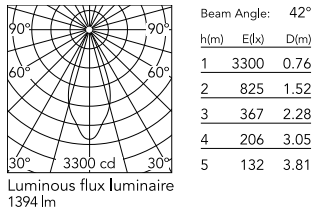
[2D](#)  ZIP

[3D](#)  ZIP

[Bim](#)  ZIP



Schematic light drawing



Photometric

| | |
|------------------------|-----------|
| Lighting type | Direct |
| Light distribution | Symmetric |
| CCT (K) | 3000 |
| CRI> | 80 |
| Beam angle C0-180 (°) | 42 |
| Beam angle C90-270 (°) | 42 |
| Extreme cut off | No |
| UGR _L | <16 |

Electrical

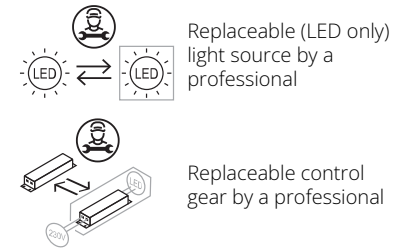
| | |
|--------------------|---------------------------------------|
| Insulation class | II |
| Frequency (Hz) | 50/60 |
| Main voltage (Vac) | 220-240 |
| LED current (mA) | 550 |
| Power supply | Integrated |
| Dimmable | Yes |
| Power supply type | Dimmable DALI 1 |
| Dimming interface | Remote Dimmable (Dimmer Not Included) |

Notes

Screening crosspiece, lenses and Honeycomb directly installable on the head of the luminaire without needing any fastening accessory. FLOS three-phase lighting track luminaires are designed and fully tested for tracks recommended by FLOS. Compatibility is guaranteed with three-phase track produced by Nordic Aluminium. Compatibility with Eutrac under request. FLOS three-phase DALI track luminaires are designed for Pulse DALI from Nordic Aluminium.

Ecodesign and Energy

Labelling



Accessories & Power Supply



OPTIONAL
Accessory

Optical

08.0526.00

Snoot shielding cone

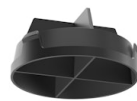


OPTIONAL
Accessory

Optical

08.8428.00

Honeycomb



OPTIONAL
Accessory

Optical

08.8429.00

Screening crosspiece



OPTIONAL
Accessory

Optical

08.8431.00

Elliptical lens



OPTIONAL
Accessory

Optical

08.8432.00

Flood lens



OPTIONAL
Accessory

Optical

08.0526.40

Snoot shielding cone



OPTIONAL
Accessory

Optical

08.0526.BW

Snoot shielding cone