

# FLOS

05.4510.40.DA White

## The Glowing Track Surface Integrated Driver

Designed by FLOS Architectural, 2025

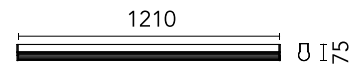


Length: 1210 - Surface

Surface lighting system that combines ambient lighting with a track that allows the installation of a wide range of projectors and accent lighting modules. Available in three lengths (1200 mm, 1800 mm, and 2400 mm). Driver included.

Are you a professional and your project needs consulting and support?

[BOOK AN APPOINTMENT](#)



### Main specifications

|                        |                     |
|------------------------|---------------------|
| Mounting               | Surface             |
| Environments           | Indoor dry location |
| Light source type      | LED                 |
| Light sources included | Yes                 |
| LED type               | Top LED             |
| Lamp category          | LED                 |
| Number of lamps        | 1                   |
| Power (W)              | 24.8                |
| System power (W)       | 27.6                |
| Source flux (lm)       | 2824                |
| Lumen Output (lm)      | 1746                |

### Physical

|             |       |
|-------------|-------|
| Colour      | White |
| Orientation | Fixed |
| Length (mm) | 1210  |
| IP internal | 20    |

### Download

Mounting instructions [↓ PDF](#)

### Photometric Files

LDT / IES [↓ ZIP](#)

### Technical Drawings

2D [↓ ZIP](#)

3D [↓ ZIP](#)

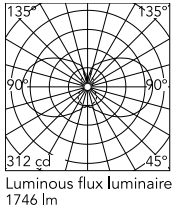


### Ecodesign and Energy Labelling

 Replaceable (LED only) light source by a professional

 Replaceable control gear by a professional

## Schematic light drawing



### Photometric

|                          |                       |
|--------------------------|-----------------------|
| Lighting type            | Total                 |
| Light distribution       | Symmetric             |
| CCT (K)                  | 2700                  |
| CRI>                     | 90                    |
| McAdam steps (SDCM)      | 3                     |
| Rf fidelity index        | 87                    |
| Rg gamut index           | 104                   |
| LED Life / Failure Ratio | L80B10>72.000h_Tc65°C |

### Electrical

|                    |                                       |
|--------------------|---------------------------------------|
| Insulation class   | II                                    |
| Frequency (Hz)     | 50/60                                 |
| Main voltage (Vac) | 220-240                               |
| Power supply       | Integrated                            |
| Dimmable           | Yes                                   |
| Power supply type  | Dimmable DALI 2                       |
| Dimming range (%)  | 1-100                                 |
| Dimming interface  | Remote Dimmable (Dimmer Not Included) |
| Batteries inside   | No                                    |

## Accessories & Power Supply



REQUIRED  
Accessory

Installation

08.1240.40

Ceiling fixing kit for Driver  
Integrated Versions



OPTIONAL  
Connector

08.1209.40

Linear Joint Surface Integrated  
Driver



OPTIONAL  
Connector

08.1210.40

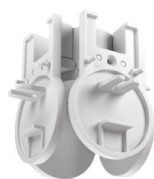
Corner Joint 2 Surface Integrated  
Driver



OPTIONAL  
Connector

08.1211.40

Corner Joint 3 Surface Integrated  
Driver



OPTIONAL  
Connector

08.1212.40

Corner Joint 4 Surface Integrated  
Driver