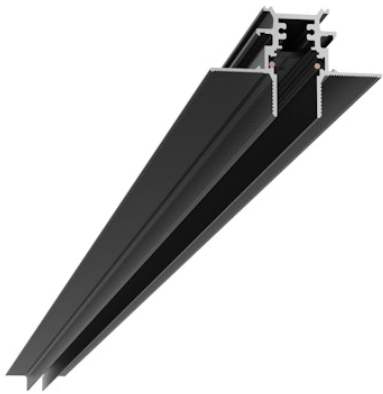


T.MAGNET EVO RECESSED PROFILE 1500 BK 48V

Designed by FLOS Architectural, 2018



Electromechanical profile for recessed installation in plasterboard ceilings and walls, available in lengths from 1m to 3m.

Are you a professional and your project needs consulting and support?

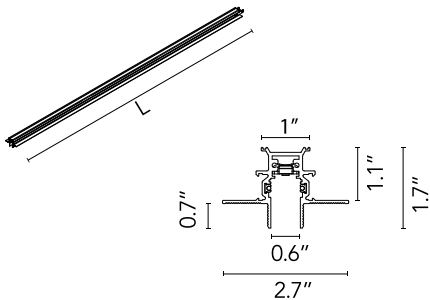
BOOK AN APPOINTMENT

Main specifications

Mounting	Wall recessed, Ceiling recessed
Environments	Indoor dry location
Light sources included	no

Physical

Color	Black
Trim	No
Field cuttable	Yes
Length (in)	59.05
Net weight (lb)	4.12
IP internal	20
IP external	20



Download

Family spec sheet	ZIP
Mounting instructions	PDF



Photometric

Extreme cut off No

Electrical

Forward voltage (V)	48
Driver	Remote excluded
Dimmable	Yes
Dimming type	Non Dimmable, Dimmable
Emergency type	No

Notes

Version compatible with "On board dimmer" luminaries and version compatible with system controlled luminaries (DALI, 1-10V, FLOS SMART CONTROL) available. Corners, connectors and accessories common for the two profile versions. Feed connector, intermediated connector and end-caps to be ordered separately. Mechanical 90° corners available in the same plane (symmetrical element for left and right corners), symmetrical 90° inner and outer corners in different planes. Intermediate connectors to be ordered separately if electrical continuity on corners is required. Corners do not admit installation of spots. Fixed or adjustable fastening kits available (optional). The fastening kits for the roof permit installing without using aluminium fastening profiles. Recommended for installations where the Tracking Magnet can be installed before the suspended plasterboard ceiling.

Accessories & Power Supply



REQUIRED
Accessory
Electrical

08.0611.14
The Tracking Magnet Profile Feed Connector



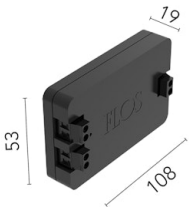
REQUIRED
Accessory
Electrical

08.0612.14
The Tracking Magnet Profile Intermediate Connector Straight



REQUIRED
Accessory
Electrical

08.0614.14
The Tracking Magnet Profile Intermediate Connector Flexible/Electrical Corner



REQUIRED
Power supply
Electrical

08.0613.14A
Dimmable control box 1-10V, 24/48V. For remote installation.



REQUIRED
Power supply
Electrical

LEDSB30W48V-NDM-D01
LED power supply source for remote installation, 48V/30W



REQUIRED
Power supply

LEDSB96W48V-NDM-D01
LED Driver, 48VDC, 96W, Non-Dimming, 120-277V



REQUIRED
Power supply

LEDSB96W48V-NDM-U01
LED Driver, 48VDC, 96W, Non-Dimming, 120-277V



REQUIRED
Power supply

LEDSB60W48V-NDM-U01
LED Driver, 48VDC, 60W, Non-Dimming, 120-277V



REQUIRED
Power supply

LEDSB60W48V-NDM-D01
LED Driver, 48VDC, 60W, Non-Dimming, 120-277V



REQUIRED
Power supply

LEDSB40W48V-NDM-U01
LED Driver, 48VDC, 40W, Non-Dimming, 120-277V



OPTIONAL
Installation

08.8866.14
Fixed ceiling kit. 2 unit kit



OPTIONAL
Accessory

06.5008.14
The Tracking Magnet Recessed Profile End Caps



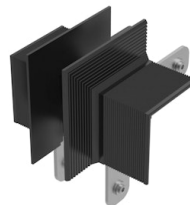
OPTIONAL
Corner

06.5006.14
The Tracking Magnet Recessed Profile Inner Mechanical Corner



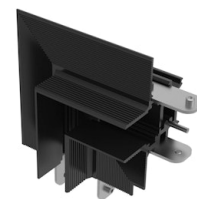
OPTIONAL
Bracket

08.8867.14UL
Track Ceiling Mounting clip 1/4" Kit - 1 Units



OPTIONAL
Corner

06.5007.14
The Tracking Magnet Recessed Profile Outer Mechanical Corner



OPTIONAL
Corner

06.5005.14
The Tracking Magnet Recessed Profile 90° Mechanical Corner