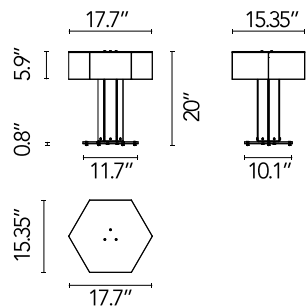


SuperWire T

Designed by Formafantasma, 2024

18W - 1200lm - 2700K - CRI> 90

SuperWire is the first family of modular lamps designed by Formafantasma for Flos. A magical and poetic project, with an essential design but a great stage presence, which recalls the work of the great glass masters of the last century. Made of planar glass and polished aluminum, its design originated from the development of a custom-made light source that emits a warm and homogeneous light. Made up of one or more hexagons of planar glass connected by a polished aluminum element, SuperWire lights up its entire surface thanks to a new source developed by the Flos R&D team: a very thin, flat, soft, flexible LED strip measuring up to one meter, which emits a warm and homogeneous light along its entire length and which can be easily removed for replacement and repair, unique in the panorama of LED bulb-less lamps. This table version, consists of a single module h 45 cm, surmounted by a hexagonal glass cover.



Are you a professional and your project needs consulting and support?

BOOK AN APPOINTMENT

### Main specifications

EAN	8059607070222
Mounting	Table
Environments	Indoor dry location
Light Source Type	LED
Light sources included	Yes
LED type	Filament LED
Power (W)	18
System power (W)	18
System flux (lm)	1200

### Physical

Color	Steel
Length (in)	17.68
Cord color	Clear
Net weight (lb)	19.84
Gross weight (lb)	35.72
Package volume (in)	14323.61
IP internal	20

### Download

Mounting instructions [Download PDF](#)

### Photometric Files

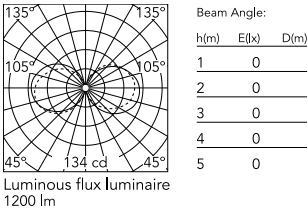
ULD [Download ULD](#)  
LDT / IES [Download ZIP](#)

### Technical Drawings

2D [Download ZIP](#)  
3D [Download ZIP](#)

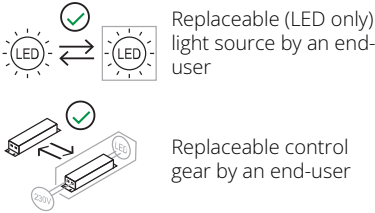


### Schematic light drawing



Ecodesign and Energy Labelling

This product contains a light source of energy efficiency class E



### Photometric

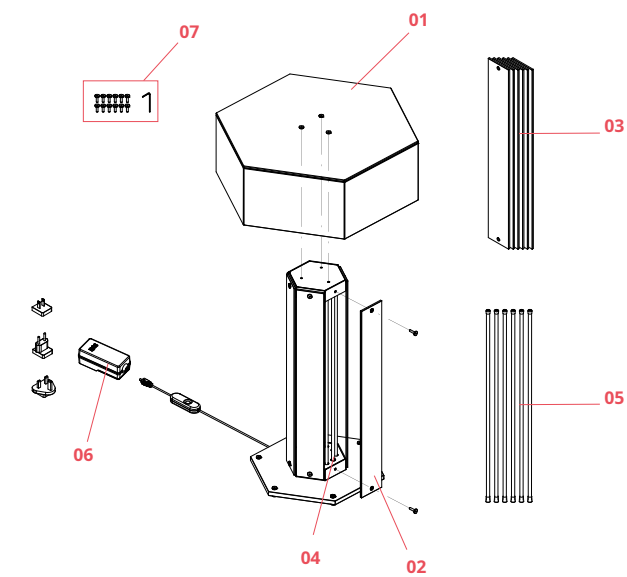
Lighting type	Total
Light distribution	Asymmetric
CCT (K)	2700
CRI>	90
Extreme cut off	No

### Electrical

Insulation class	III
Frequency (Hz)	50/60
Main voltage (Vac)	100-240
Driver	Remote included
Dimmable	Yes
Dimming type	Dimmable
Dimming interface	Switch Integrated (Remote Dimmable)
Plug type	Type A, Type C, Type G
Batteries inside	No

Spare Parts

06.    Black plug assembly kit & 48V driver    RF6600130





RF6600130

Black plug assembly kit & 48V  
driver