

FLOS

03.9501.ET Brushed Brass

Super Line Up&Down Direct

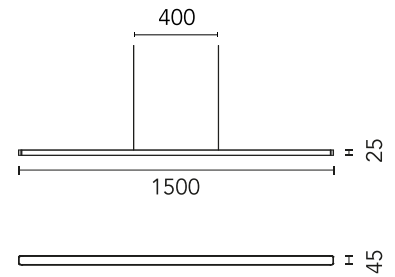
Designed by FLOS Architectural



LED luminaire for direct and indirect lighting with a signature minimalist and compact design, to be installed on ceilings by means of suspension. Power source included in installation kits must be ordered separately.

Are you a professional and your project needs consulting and support?

[BOOK AN APPOINTMENT](#)



Main specifications

Mounting	Suspension
Environments	Indoor dry location
Light source type	LED
Light sources included	Yes
LED type	Top LED
Lamp category	LED
Number of lamps	1
Power (W)	58
System power (W)	60
Source flux (lm)	7351
Lumen Output (lm)	5472
Efficacy (lm/W)	91.2

Physical

Colour	Brushed Brass
Orientation	Fixed
Length (mm)	1500
Net weight (kg)	1.45
IP internal	20
IP external	20

Download

Mounting instructions [↓ PDF](#)

Photometric Files

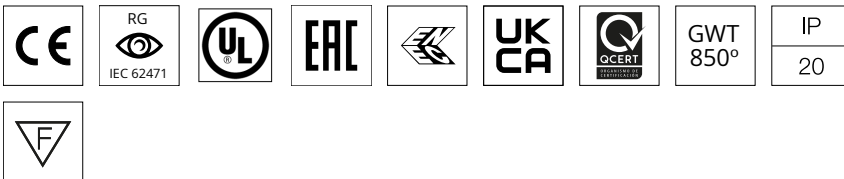
LDT / IES [↓ ZIP](#)

Technical Drawings

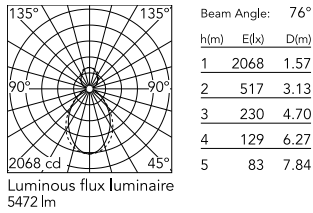
2D [↓ ZIP](#)

3D [↓ ZIP](#)

[Bim](#) [↓ ZIP](#)



Schematic light drawing



Photometric

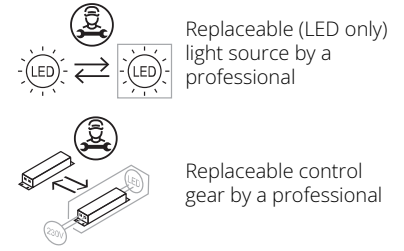
Lighting type	Direct, Indirect
Light distribution	Asymmetric
CCT (K)	4000
CRI>	90
McAdam steps (SDCM)	3
LED Life / Failure Ratio	L80B50 - 50.0000h (Tc 85°C)
Beam angle C0-180 (°)	76
Beam angle C90-270 (°)	82
Beam angle indirect C0-180 (°)	110
Beam angle indirect C90-270 (°)	110
Extreme cut off	No

Notes

Cable 4.25 m

Ecodesign and Energy

Labelling



Electrical

Insulation class	III
Forward voltage (V)	55.8
LED current (mA)	1050
Power supply	Remote
Dimmable	Yes
Power supply type	Dimmable
Dimming interface	Remote Dimmable (Dimmer Not Included)

Accessories & Power Supply



REQUIRED
Power supply

Electrical

08.0524.14

Remote Power Supply Kit 60W.
Non Dimmable



REQUIRED
Power supply

Electrical

08.0524.02

Remote Power Supply Kit 60W.
Non Dimmable



REQUIRED
Power supply

Electrical

08.0525.02A

Remote Power Supply Kit 60W.
Dali Version

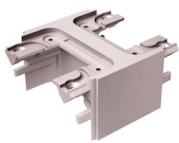


REQUIRED
Power supply

Electrical

08.0522.14A

Recessed Kit 60W. Non Dimmable

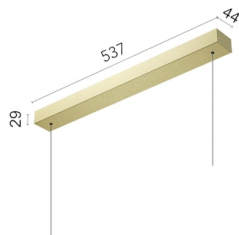


REQUIRED
Accessory

Installation

08.9076.EU

Interconnection Accessory



REQUIRED
Power supply

Electrical

08.0521.ETA

Surface Kit 60W. Dali Version



REQUIRED
Power supply

Electrical

08.0524.40

Remote Power Supply Kit 60W.
Non Dimmable

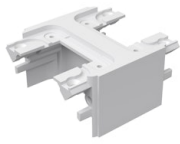


REQUIRED
Power supply

Electrical

08.0523.ETA

Recessed Kit 60W. Dali Version



REQUIRED
Accessory

Installation

08.9076.40

Interconnection Accessory

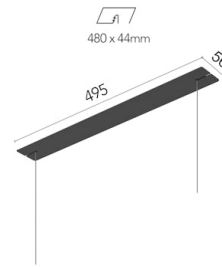


REQUIRED
Power supply

Electrical

08.0524.ET

Remote Power Supply Kit 60W.
Non Dimmable



REQUIRED
Power supply

Electrical

08.0523.14A

Recessed Kit 60W. Dali Version

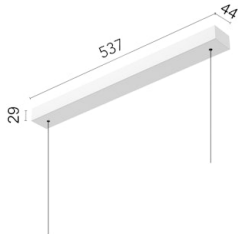


REQUIRED
Power supply

Electrical

08.0525.14A

Remote Power Supply Kit 60W.
Dali Version

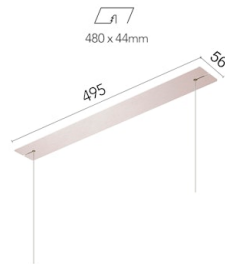


REQUIRED
Power supply

Electrical

08.0521.40A

Surface Kit 60W. Dali Version

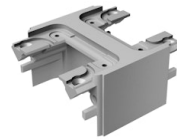


REQUIRED
Power supply

Electrical

08.0523.EUA

Recessed Kit 60W. Dali Version



REQUIRED
Accessory

Installation

08.9076.02

Interconnection Accessory

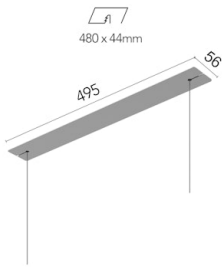


REQUIRED
Power supply

Electrical

08.0525.EUA

Remote Power Supply Kit 60W.
Dali Version



REQUIRED
Power supply
Electrical

08.0523.02A

Recessed Kit 60W. Dali Version



REQUIRED
Power supply
Electrical

08.0525.40A

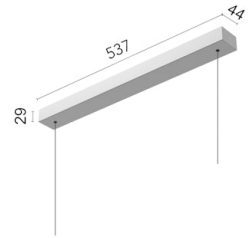
Remote Power Supply Kit 60W.
Dali Version



REQUIRED
Power supply
Electrical

08.0524.EU

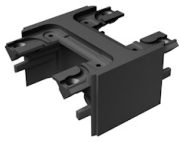
Remote Power Supply Kit 60W.
Non Dimmable



REQUIRED
Power supply
Electrical

08.0521.02A

Surface Kit 60W. Dali Version



REQUIRED
Accessory
Installation

08.9076.14

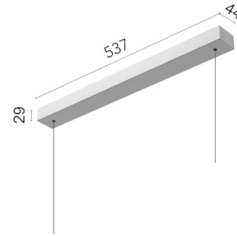
Interconnection Accessory



REQUIRED
Power supply
Electrical

08.0525.ETA

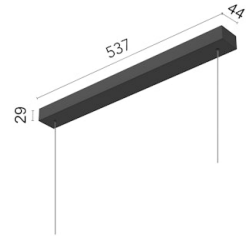
Remote Power Supply Kit 60W.
Dali Version



REQUIRED
Power supply
Electrical

08.0520.02A

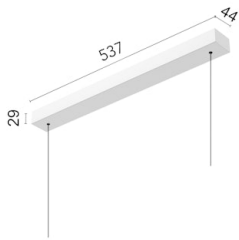
Surface Kit 60W. Non Dimmable



REQUIRED
Power supply
Electrical

08.0520.14A

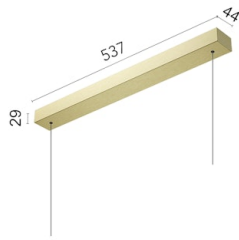
Surface Kit 60W. Non Dimmable



REQUIRED
Power supply
Electrical

08.0520.40A

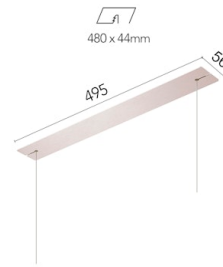
Surface Kit 60W. Non Dimmable



REQUIRED
Power supply
Electrical

08.0520.ETA

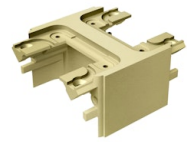
Surface Kit 60W. Non Dimmable



REQUIRED
Power supply
Electrical

08.0522.EUA

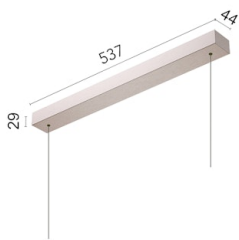
Recessed Kit 60W. Non Dimmable



REQUIRED
Accessory
Installation

08.9076.ET

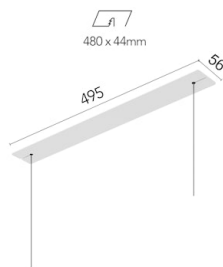
Interconnection Accessory



REQUIRED
Power supply
Electrical

08.0520.EUA

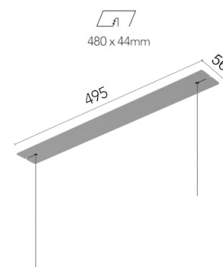
Surface Kit 60W. Non Dimmable



REQUIRED
Power supply
Electrical

08.0522.40A

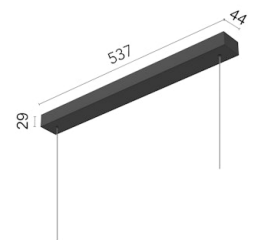
Recessed Kit 60W. Non Dimmable



REQUIRED
Power supply
Electrical

08.0522.02A

Recessed Kit 60W. Non Dimmable



REQUIRED
Power supply
Electrical

08.0521.14A

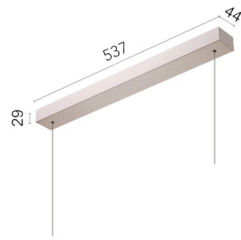
Surface Kit 60W. Dali Version



REQUIRED
Power supply
Electrical

08.0522.ETA

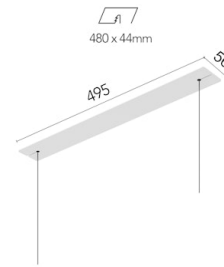
Recessed Kit 60W. Non Dimmable



REQUIRED
Power supply
Electrical

08.0521.EUA

Surface Kit 60W. Dali Version



REQUIRED
Power supply
Electrical

08.0523.40A

Recessed Kit 60W. Dali Version