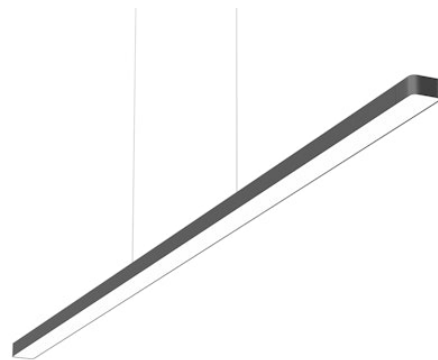


# FLOS

03.9500.14 Black

## Super Line Up&Down Direct

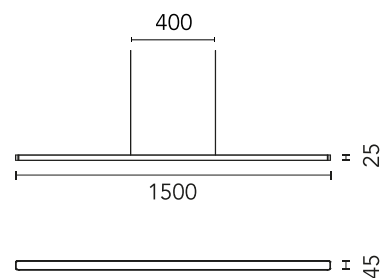
Designed by FLOS Architectural, 2017



LED luminaire for direct and indirect lighting with a signature minimalist and compact design, to be installed on ceilings by means of suspension. Power source included in installation kits must be ordered separately.

Are you a professional and your project needs consulting and support?

[BOOK AN APPOINTMENT](#)



### Main specifications

|                        |                     |
|------------------------|---------------------|
| Mounting               | Suspension          |
| Environments           | Indoor dry location |
| Light source type      | LED                 |
| Light sources included | Yes                 |
| LED type               | Top LED             |
| Lamp category          | LED                 |
| Number of lamps        | 1                   |
| Power (W)              | 58                  |
| System power (W)       | 60                  |
| Source flux (lm)       | 6927                |
| Lumen Output (lm)      | 5154                |
| Efficacy (lm/W)        | 85.9                |

### Physical

|                 |       |
|-----------------|-------|
| Colour          | Black |
| Trim            | No    |
| Orientation     | Fixed |
| Length (mm)     | 1500  |
| Net weight (kg) | 1.45  |
| IP internal     | 20    |
| IP external     | 20    |

### Download

Mounting instructions [↓ PDF](#)

### Photometric Files

LDT / IES [↓ ZIP](#)

### Technical Drawings

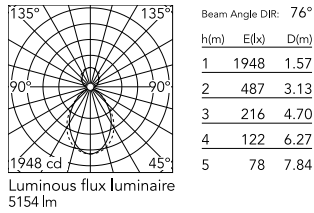
2D [↓ ZIP](#)

3D [↓ ZIP](#)

[Bim](#) [↓ ZIP](#)

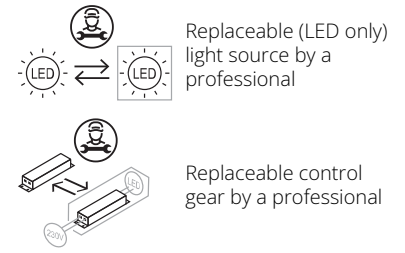


## Schematic light drawing



## Ecodesign and Energy

### Labelling



## Photometric

|                          |                            |
|--------------------------|----------------------------|
| Lighting type            | Direct, Indirect           |
| Light distribution       | Asymmetric                 |
| CCT (K)                  | 3000                       |
| CRI>                     | 90                         |
| McAdam steps (SDCM)      | 3                          |
| LED Life / Failure Ratio | L80B50 > 50.000h (Tc=85°C) |
| Beam angle C0-180 (°)    | 76                         |
| Beam angle C90-270 (°)   | 82                         |

## Electrical

|                     |                                       |
|---------------------|---------------------------------------|
| Insulation class    | III                                   |
| Forward voltage (V) | 55.8                                  |
| LED current (mA)    | 1050                                  |
| Power supply        | Remote                                |
| Dimmable            | Yes                                   |
| Power supply type   | Dimmable                              |
| Dimming interface   | Remote Dimmable (Dimmer Not Included) |
| Emergency           | No                                    |

## Notes

Cable 4.25 m

## Accessories & Power Supply



REQUIRED  
Power supply

Electrical

08.0524.14

Remote Power Supply Kit 60W.  
Non Dimmable

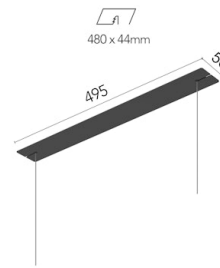


REQUIRED  
Power supply

Electrical

08.0524.02

Remote Power Supply Kit 60W.  
Non Dimmable



REQUIRED  
Power supply

Electrical

08.0522.14A

Recessed Kit 60W. Non Dimmable



REQUIRED  
Power supply

Electrical

08.0524.40

Remote Power Supply Kit 60W.  
Non Dimmable

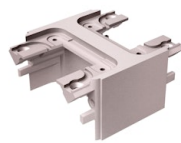


REQUIRED  
Power supply

Electrical

08.0524.ET

Remote Power Supply Kit 60W.  
Non Dimmable

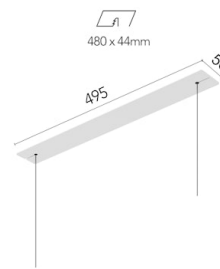


REQUIRED  
Accessory

Installation

08.9076.EU

Interconnection Accessory



REQUIRED  
Power supply

Electrical

08.0523.40A

Recessed Kit 60W. Dali Version

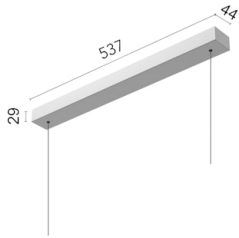


REQUIRED  
Power supply

Electrical

08.0524.EU

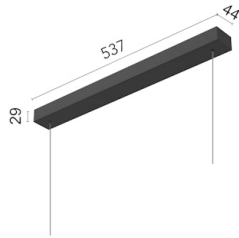
Remote Power Supply Kit 60W.  
Non Dimmable



REQUIRED  
Power supply  
Electrical

08.0520.02A

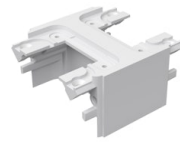
Surface Kit 60W. Non Dimmable



REQUIRED  
Power supply  
Electrical

08.0520.14A

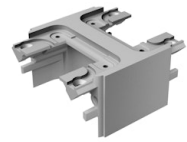
Surface Kit 60W. Non Dimmable



REQUIRED  
Accessory  
Installation

08.9076.40

Interconnection Accessory



REQUIRED  
Accessory  
Installation

08.9076.02

Interconnection Accessory



REQUIRED  
Power supply  
Electrical

08.0525.40A

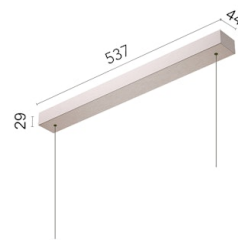
Remote Power Supply Kit 60W.  
Dali Version



REQUIRED  
Power supply  
Electrical

08.0522.EUA

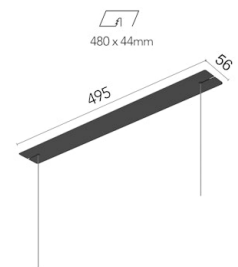
Recessed Kit 60W. Non Dimmable



REQUIRED  
Power supply  
Electrical

08.0521.EUA

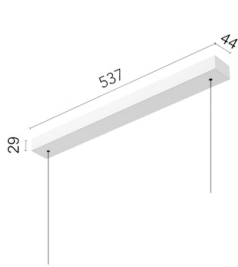
Surface Kit 60W. Dali Version



REQUIRED  
Power supply  
Electrical

08.0523.14A

Recessed Kit 60W. Dali Version



REQUIRED  
Power supply  
Electrical

08.0520.40A

Surface Kit 60W. Non Dimmable



REQUIRED  
Power supply  
Electrical

08.0523.ETA

Recessed Kit 60W. Dali Version



REQUIRED  
Power supply  
Electrical

08.0525.ETA

Remote Power Supply Kit 60W.  
DALI Version



REQUIRED  
Power supply  
Electrical

08.0522.ETA

Recessed Kit 60W. Non Dimmable



REQUIRED  
Power supply  
Electrical

08.0525.14A

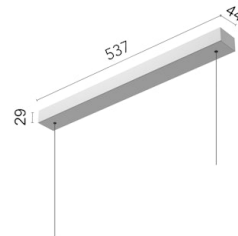
Remote Power Supply Kit 60W.  
DALI Version



REQUIRED  
Power supply  
Electrical

08.0525.EUA

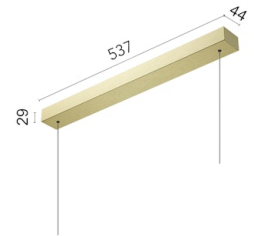
Remote Power Supply Kit 60W.  
DALI Version



REQUIRED  
Power supply  
Electrical

08.0521.02A

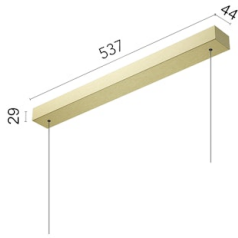
Surface Kit 60W. Dali Version



REQUIRED  
Power supply  
Electrical

08.0521.ETA

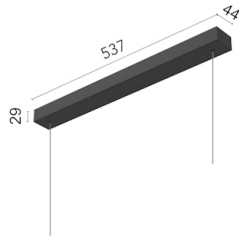
Surface Kit 60W. Dali Version



REQUIRED  
Power supply  
Electrical

08.0520.ETA

Surface Kit 60W. Non Dimmable



REQUIRED  
Power supply  
Electrical

08.0521.14A

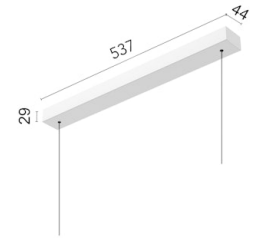
Surface Kit 60W. Dali Version



REQUIRED  
Power supply  
Electrical

08.0525.02A

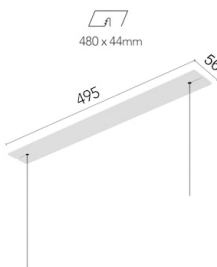
Remote Power Supply Kit 60W.  
Dali Version



REQUIRED  
Power supply  
Electrical

08.0521.40A

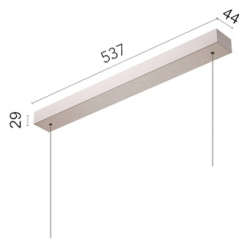
Surface Kit 60W. Dali Version



REQUIRED  
Power supply  
Electrical

08.0522.40A

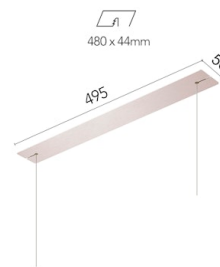
Recessed Kit 60W. Non Dimmable



REQUIRED  
Power supply  
Electrical

08.0520.EUA

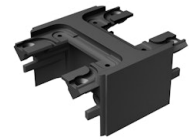
Surface Kit 60W. Non Dimmable



REQUIRED  
Power supply  
Electrical

08.0523.EUA

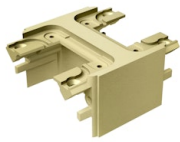
Recessed Kit 60W. Dali Version



REQUIRED  
Accessory  
Installation

08.9076.14

Interconnection Accessory



REQUIRED  
Accessory

Installation

08.9076.ET

Interconnection Accessory

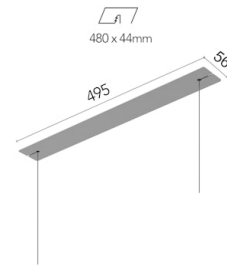


REQUIRED  
Power supply

Electrical

08.0523.02A

Recessed Kit 60W. Dali Version



REQUIRED  
Power supply

Electrical

08.0522.02A

Recessed Kit 60W. Non Dimmable