

FLOS

03.8042.14ADA Black

Spot 90 Dali Version

Designed by FLOS Architectural, 2017



Accent lighting LED module.

Are you a professional and your project needs consulting and support?

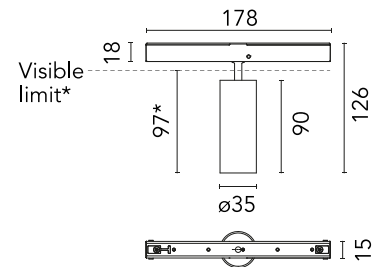
[BOOK AN APPOINTMENT](#)

Main specifications

Mounting	Track
Environments	Indoor dry location
Light source type	LED
Light sources included	Yes
LED type	Power LED
Lamp category	LED
Number of lamps	1
Power (W)	8.5
System power (W)	8.5
Source flux (lm)	610
Lumen Output (lm)	428
Efficacy (lm/W)	50.35


Physical

Colour	Black
Trim	No
Orientation	Adjustable
Rotation (°)	360
Longitudinal tilting (°)	90
Spot diameter (mm)	35
Length (mm)	178
Net weight (kg)	0.17
IP internal	20
IP external	20



*installed in The Tracking Magnet

Download

[Mounting instructions](#)  PDF

Photometric Files

[LDT / IES](#)  ZIP

Technical Drawings

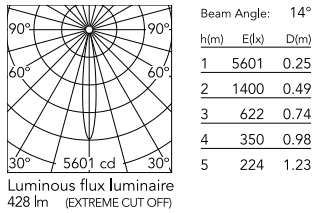
[2D](#)  ZIP

[3D](#)  ZIP

[Bim](#)  ZIP



Schematic light drawing



Photometric

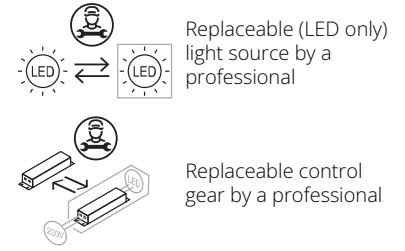
Lighting type	Direct
Light distribution	Symmetric
CCT (K)	2700
CRI>	90
McAdam steps (SDCM)	2
LED Life / Failure Ratio	L80B50 > 50.000h (Tc=85°C)
Beam angle C0-180 (°)	14
Beam angle C90-270 (°)	14
UGR _L	<10

Electrical

Insulation class	III
Forward voltage (V)	48
LED current (mA)	600
Power supply	Remote excluded
Dimmable	Yes
Power supply type	Dimmable DALI 2
Dimming range (%)	30-100
Dimming interface	Remote Dimmable (Dimmer Not Included)
Emergency	No

Ecodesign and Energy

Labelling



Notes

Accessories included (honeycomb and screening crosspiece). Only compatible with DALI profile version.