

FLOS

03.8075.14ADA Black

Spot 150 Dali Version

Designed by FLOS Architectural, 2017



Accent lighting LED module.

Are you a professional and your project needs consulting and support?

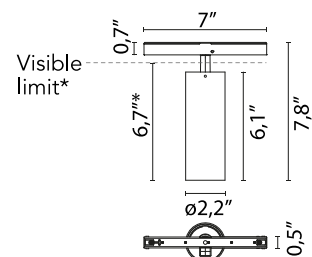
BOOK AN APPOINTMENT

Main specifications

Mounting	Track
Environments	Indoor dry location
Light Source Type	LED
Light sources included	Yes
LED type	LED array
Lamp category	LED
Number of lamps	1
Power (W)	22.5
System power (W)	24.1
Source flux (lm)	2569
System flux (lm)	1667
Efficacy (lm/W)	74

Physical

Color	Black
Trim	No
Orientation	Adjustable
Rotation (°)	360
Longitudinal tilting (°)	90
Transversal tilting (°)	90
Net weight (lb)	0.93
Gross weight (lb)	1.41
IP internal	20



*installed in The Tracking Magnet

Download

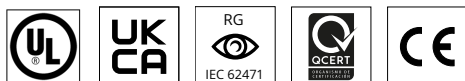
Family spec sheet	ZIP
Family spec sheet	ZIP
Mounting instructions	PDF

Photometric Files

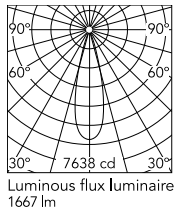
LDT / IES	ZIP
-----------	-----

Technical Drawings

2D	ZIP
3D	ZIP



Schematic light drawing



Photometric

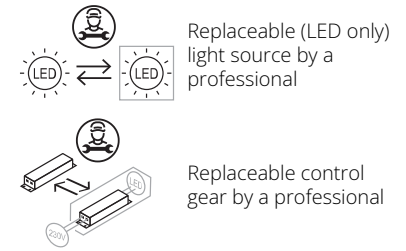
Lighting type	Direct
Light distribution	Symmetric
CCT (K)	3000
CRI>	90
McAdam steps (SDCM)	2
LED Life / Failure Ratio	L80B50>50.000h (Tc=85°C)
Beam angle C0-180 (°)	27
Beam angle C90-270 (°)	27
UGR _L	<10

Electrical

Insulation class	III
Forward voltage (V)	48
LED current (mA)	600
Driver	Remote excluded
Dimmable	Yes
Dimming type	Dimmable DALI 2
Dimming range (%)	10-100
Dimming interface	Remote Dimmable (Dimmer Not Included)

Ecodesign and Energy

Labelling



Notes

Screening crosspiece, lenses and honeycomb directly installable on the head of the luminaire without needing any fastening accessory. Installation compatible with honeycomb + lense at the same time. Only compatible with DALI profile version.

Accessories & Power Supply



OPTIONAL
Accessory

Optical

08.0526.00

Snoot shielding cone

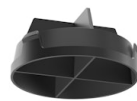


OPTIONAL
Accessory

Optical

08.8428.00

Honeycomb



OPTIONAL
Accessory

Optical

08.8429.00

Screening crosspiece



OPTIONAL
Accessory

Optical

08.8431.00

Elliptical lens



OPTIONAL
Accessory

Optical

08.8432.00

Flood lens



OPTIONAL
Accessory

Optical

08.0526.40

Snoot shielding cone