

FLOS

03.8154.05A Polished Aluminium

Spot 120 On Board Dimmer

Designed by FLOS Architectural, 2017



LED - LED array - 12.5W - 654lm - 2700K - CRI> 90 - Beam° 17

Accent lighting LED module.

Are you a professional and your project needs consulting and support?

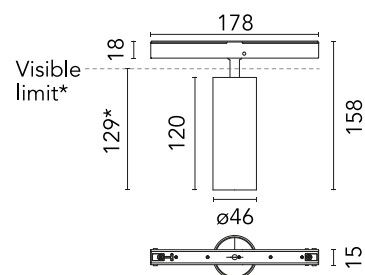
[BOOK AN APPOINTMENT](#)

Main specifications

Mounting	Track
Environments	Indoor dry location
Light source type	LED
Light sources included	Yes
LED type	LED array
Lamp category	LED
Number of lamps	1
Power (W)	12.5
System power (W)	12.5
Source flux (lm)	921
Lumen Output (lm)	654
Efficacy (lm/W)	52.32

Physical

Colour	Polished Aluminium
Trim	No
Orientation	Adjustable
Rotation (°)	360
Longitudinal tilting (°)	90
Spot diameter (mm)	46
Length (mm)	178
Net weight (kg)	0.29
IP internal	20



*installed in The Tracking Magnet

Download

Mounting instructions [↓ PDF](#)

Photometric Files

LDT / IES [↓ ZIP](#)

Technical Drawings

2D [↓ ZIP](#)

3D [↓ ZIP](#)

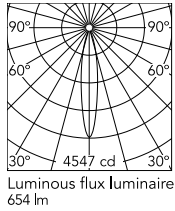


Ecodesign and Energy Labelling

 Replaceable (LED only) light source by a professional

 Replaceable control gear by a professional

Schematic light drawing



Photometric

Lighting type	Direct
Light distribution	Symmetric
CCT (K)	2700
CRI>	90
McAdam steps (SDCM)	2
LED Life / Failure Ratio	L80B50 > 50.000h (Tc=85°C)
Beam angle C0-180 (°)	17
Beam angle C90-270 (°)	17
Extreme cut off	No
UGR _L	<10

Electrical

Insulation class	III
Forward voltage (V)	48
LED current (mA)	350
Power supply	Remote excluded
Dimmable	Yes
Power supply type	Dimmer on board
Dimming range (%)	10-100
Dimming interface	Dimmer Integrated