

FLOS

03.8052.40A White

Spot 120 On Board Dimmer

Designed by FLOS Architectural, 2017



Accent lighting LED module.

Are you a professional and your project needs consulting and support?

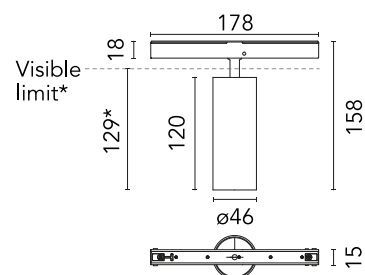
[BOOK AN APPOINTMENT](#)

Main specifications

Mounting	Track
Environments	Indoor dry location
Light source type	LED
Light sources included	Yes
LED type	Power LED
Lamp category	LED
Number of lamps	1
Power (W)	12
System power (W)	12
Source flux (lm)	724
Lumen Output (lm)	539
Efficacy (lm/W)	44.92

Physical

Colour	White
Trim	No
Orientation	Adjustable
Rotation (°)	360
Longitudinal tilting (°)	90
Spot diameter (mm)	46
Length (mm)	178
Net weight (kg)	0.29
IP internal	20
IP external	20



*installed in The Tracking Magnet

Download

[Mounting instructions](#) PDF

Photometric Files

[LDT / IES](#) ZIP

Technical Drawings

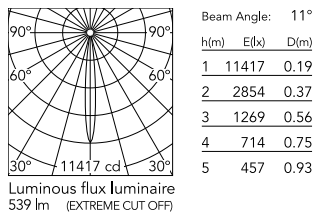
[2D](#) ZIP

[3D](#) ZIP

[Bim](#) ZIP



Schematic light drawing



Photometric

Lighting type	Direct
Light distribution	Symmetric
CCT (K)	2700
CRI>	90
McAdam steps (SDCM)	2
LED Life / Failure Ratio	L80B50 > 50.000h (Tc=85°C)
Beam angle C0-180 (°)	11
Beam angle C90-270 (°)	11
UGR _L	<10

Electrical

Insulation class	III
Forward voltage (V)	48
LED current (mA)	800
Power supply	Remote excluded
Dimmable	Yes
Power supply type	Dimmer on board
Dimming range (%)	10-100
Dimming interface	Dimmer Integrated
Emergency	No

Ecodesign and Energy

Labelling



Notes

Accessories included (honeycomb and screening crosspiece).