

# FLOS

03.8052.14A Black

## Spot 120 On Board Dimmer

Designed by FLOS Architectural, 2017



Accent lighting LED module.

Are you a professional and your project needs consulting and support?

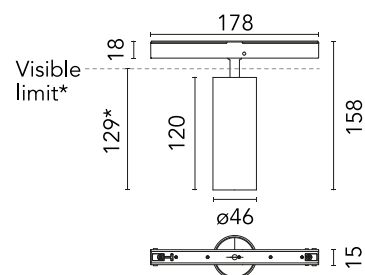
[BOOK AN APPOINTMENT](#)

### Main specifications

Mounting	Track
Environments	Indoor dry location
Light source type	LED
Light sources included	Yes
LED type	Power LED
Lamp category	LED
Number of lamps	1
Power (W)	12
System power (W)	12
Source flux (lm)	724
Lumen Output (lm)	539
Efficacy (lm/W)	44.92

### Physical

Colour	Black
Trim	No
Orientation	Adjustable
Rotation (°)	360
Longitudinal tilting (°)	90
Spot diameter (mm)	46
Length (mm)	178
Net weight (kg)	0.29
IP internal	20
IP external	20



\*installed in The Tracking Magnet

### Download

Mounting instructions [↓ PDF](#)

### Photometric Files

LDT / IES [↓ ZIP](#)

### Technical Drawings

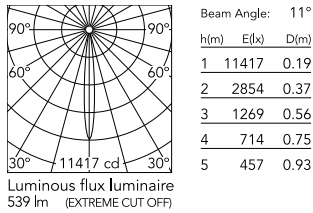
2D [↓ ZIP](#)

3D [↓ ZIP](#)

[Bim](#) [↓ ZIP](#)



## Schematic light drawing



## Photometric

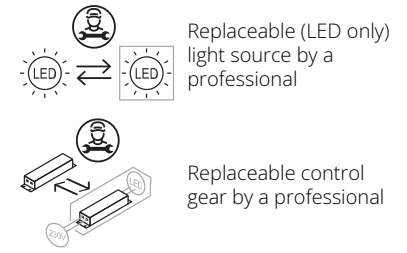
Lighting type	Direct
Light distribution	Symmetric
CCT (K)	2700
CRI>	90
McAdam steps (SDCM)	2
LED Life / Failure Ratio	L80B50 > 50.000h (Tc=85°C)
Beam angle C0-180 (°)	11
Beam angle C90-270 (°)	11
UGR <sub>L</sub>	<10

## Electrical

Insulation class	III
Forward voltage (V)	48
LED current (mA)	800
Power supply	Remote excluded
Dimmable	Yes
Power supply type	Dimmer on board
Dimming range (%)	10-100
Dimming interface	Dimmer Integrated
Emergency	No

## Ecodesign and Energy

### Labelling



## Notes

Accessories included (honeycomb and screening crosspiece).