

# FLOS

03.8157.05A1V Polished Aluminium

**Spot 120 Dimmable 1-10V**  
Designed by FLOS Architectural, 2017



Accent lighting LED module.

Are you a professional and your project needs consulting and support?

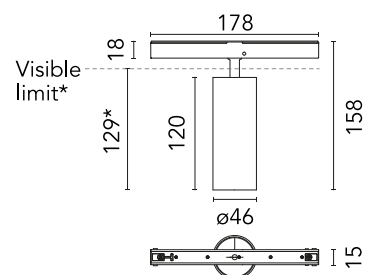
[BOOK AN APPOINTMENT](#)

## Main specifications

Mounting	Track
Environments	Indoor dry location
Light source type	LED
Light sources included	Yes
LED type	LED array
Lamp category	LED
Number of lamps	1
Power (W)	12.5
System power (W)	12.5
Source flux (lm)	968
Lumen Output (lm)	629
Efficacy (lm/W)	50.32

## Physical

Colour	Polished Aluminium
Trim	No
Orientation	Adjustable
Rotation (°)	360
Longitudinal tilting (°)	90
Spot diameter (mm)	46
Length (mm)	178
Net weight (kg)	0.29
IP internal	20



\*installed in The Tracking Magnet

## Download

Mounting instructions [↓ PDF](#)

## Photometric Files

LDT / IES [↓ ZIP](#)

## Technical Drawings

2D [↓ ZIP](#)

3D [↓ ZIP](#)

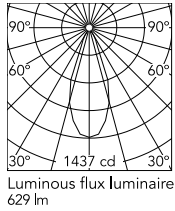


## Ecodesign and Energy Labelling

 Replaceable (LED only) light source by a professional

 Replaceable control gear by a professional

## Schematic light drawing



Beam Angle: 40°

h(m)	E(lx)	D(m)
1	1437	0.73
2	359	1.45
3	160	2.18
4	90	2.91
5	57	3.64

## Photometric

Lighting type	Direct
Light distribution	Symmetric
CCT (K)	3000
CRI>	90
McAdam steps (SDCM)	2
LED Life / Failure Ratio	L80B50 > 50.000h (Tc=85°C)
Beam angle C0-180 (°)	40
Beam angle C90-270 (°)	40
Extreme cut off	No
UGR <sub>L</sub>	<19

## Electrical

Insulation class	III
Forward voltage (V)	48
LED current (mA)	350
Power supply	Remote excluded
Dimmable	Yes
Power supply type	Dimmable 1-10V
Dimming range (%)	10-100
Dimming interface	Remote Dimmable (Dimmer Not Included)

## Notes

Only compatible with 1-10V profile version.