

FLOS

03.8154.40.1V White

Spot 120 Dimmable 1-10V

Designed by FLOS Architectural, 2017



Accent lighting LED module.

Are you a professional and your project needs consulting and support?

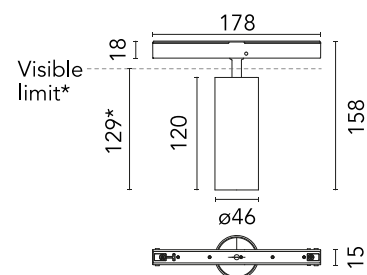
[BOOK AN APPOINTMENT](#)

Main specifications

| | |
|------------------------|---------------------|
| Mounting | Track |
| Environments | Indoor dry location |
| Light source type | LED |
| Light sources included | Yes |
| LED type | LED array |
| Lamp category | LED |
| Number of lamps | 1 |
| Power (W) | 12.5 |
| System power (W) | 12.5 |
| Source flux (lm) | 921 |
| Lumen Output (lm) | 654 |
| Efficacy (lm/W) | 52.32 |

Physical

| | |
|--------------------------|------------|
| Colour | White |
| Trim | No |
| Orientation | Adjustable |
| Rotation (°) | 360 |
| Longitudinal tilting (°) | 90 |
| Spot diameter (mm) | 46 |
| Length (mm) | 178 |
| Net weight (kg) | 0.29 |
| IP internal | 20 |
| IP external | 20 |



*installed in The Tracking Magnet

Download

[Mounting instructions](#) PDF

Photometric Files

[LDT / IES](#) ZIP

Technical Drawings

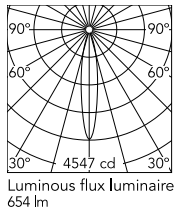
[2D](#) ZIP

[3D](#) ZIP

[Bim](#) ZIP



Schematic light drawing



Beam Angle: 17°

| h(m) | E(lx) | D(m) |
|------|-------|------|
| 1 | 4547 | 0.31 |
| 2 | 1137 | 0.61 |
| 3 | 505 | 0.92 |
| 4 | 284 | 1.23 |
| 5 | 182 | 1.53 |

Photometric

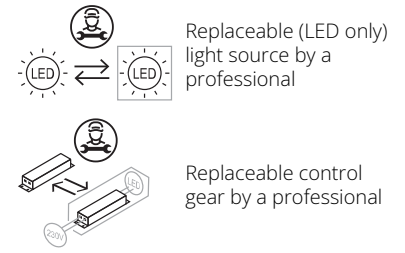
| | |
|--------------------------|----------------------------|
| Lighting type | Direct |
| Light distribution | Symmetric |
| CCT (K) | 2700 |
| CRI> | 90 |
| McAdam steps (SDCM) | 2 |
| LED Life / Failure Ratio | L80B50 > 50.000h (Tc=85°C) |
| Beam angle C0-180 (°) | 17 |
| Beam angle C90-270 (°) | 17 |
| UGR _L | <10 |

Electrical

| | |
|---------------------|---------------------------------------|
| Insulation class | III |
| Forward voltage (V) | 48 |
| LED current (mA) | 350 |
| Power supply | Remote excluded |
| Dimmable | Yes |
| Power supply type | Dimmable 1-10V |
| Dimming range (%) | 10-100 |
| Dimming interface | Remote Dimmable (Dimmer Not Included) |
| Emergency | No |

Ecodesign and Energy

Labelling



Notes

Accessories included (honeycomb and screening crosspiece). Only compatible with 1-10V profile version.