

FLOS

03.8054.14A1V Black

Spot 120 Dimmable 1-10V

Designed by FLOS Architectural, 2017



Accent lighting LED module.

Are you a professional and your project needs consulting and support?

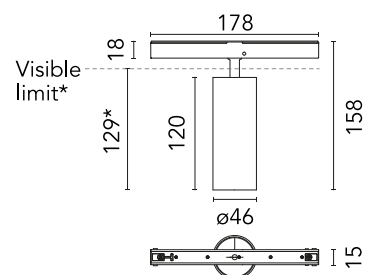
[BOOK AN APPOINTMENT](#)

Main specifications

Mounting	Track
Environments	Indoor dry location
Light source type	LED
Light sources included	Yes
LED type	Power LED
Lamp category	LED
Number of lamps	1
Power (W)	12
System power (W)	12
Source flux (lm)	724
Lumen Output (lm)	487
Efficacy (lm/W)	40.58

Physical

Colour	Black
Trim	No
Orientation	Adjustable
Rotation (°)	360
Longitudinal tilting (°)	90
Spot diameter (mm)	46
Length (mm)	178
Net weight (kg)	0.29
IP internal	20
IP external	20



*installed in The Tracking Magnet

Download

[Mounting instructions](#) PDF

Photometric Files

[LDT / IES](#) ZIP

Technical Drawings

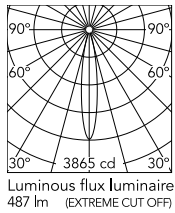
[2D](#) ZIP

[3D](#) ZIP

[Bim](#) ZIP



Schematic light drawing



h(m)	E(lx)	D(m)
1	3865	0.29
2	966	0.59
3	429	0.88
4	242	1.18
5	155	1.47

Photometric

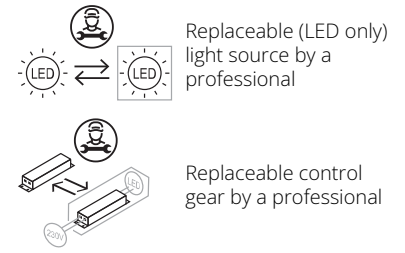
Lighting type	Direct
Light distribution	Symmetric
CCT (K)	2700
CRI>	90
McAdam steps (SDCM)	2
LED Life / Failure Ratio	L80B50 > 50.000h (Tc=85°C)
Beam angle C0-180 (°)	17
Beam angle C90-270 (°)	17
UGR _L	<10

Electrical

Insulation class	III
Forward voltage (V)	48
LED current (mA)	800
Power supply	Remote excluded
Dimmable	Yes
Power supply type	Dimmable 1-10V
Dimming range (%)	10-100
Dimming interface	Remote Dimmable (Dimmer Not Included)
Emergency	No

Ecodesign and Energy

Labelling



Notes

Accessories included (honeycomb and screening crosspiece). Only compatible with 1-10V profile version.