

FLOS

03.8156.14.CB Black

Spot 120 Casambi integrated

Designed by FLOS Architectural, 2020



Accent lighting LED module.

Are you a professional and your project needs consulting and support?

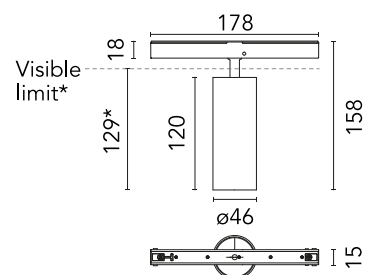
[BOOK AN APPOINTMENT](#)

Main specifications

Mounting	Track
Environments	Indoor dry location
Light source type	LED
Light sources included	Yes
LED type	LED array
Lamp category	LED
Number of lamps	1
Power (W)	12.5
System power (W)	12.5
Source flux (lm)	921
Lumen Output (lm)	599
Efficacy (lm/W)	47.92

Physical

Colour	Black
Trim	No
Orientation	Adjustable
Rotation (°)	360
Longitudinal tilting (°)	90
Spot diameter (mm)	46
Length (mm)	178
Net weight (kg)	0.29
IP internal	20
IP external	20



*installed in The Tracking Magnet

Download

[Mounting instructions](#) PDF

Photometric Files

[LDT / IES](#) ZIP

Technical Drawings

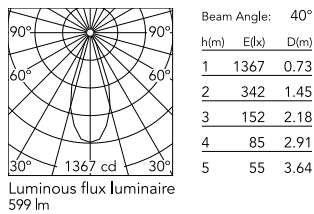
[2D](#) ZIP

[3D](#) ZIP

[Bim](#) ZIP



Schematic light drawing



Photometric

Lighting type	Direct
Light distribution	Symmetric
CCT (K)	2700
CRI>	90
McAdam steps (SDCM)	2
LED Life / Failure Ratio	L80B50 > 50.000h (Tc=85°C)
Beam angle C0-180 (°)	40
Beam angle C90-270 (°)	40
UGR _L	<19

Electrical

Insulation class	III
Forward voltage (V)	28.7
LED current (mA)	350
Power supply	Remote excluded
Dimmable	Yes
Power supply type	Dimmable Casambi
Dimming range (%)	10-100
Dimming interface	Remote Dimmable (Dimmer Not Included)
Emergency	No

Ecodesign and Energy

Labelling



Notes

Accessories included (honeycomb and screening crosspiece). The control system with the Casambi version of light fixtures is directly and individually regulated wirelessly using the application FLOS Control® by Casambi.