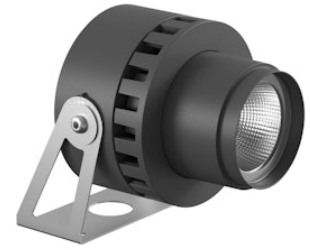


FLOS

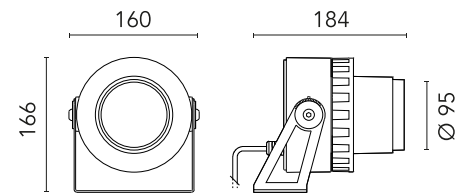
FA54103033 Anthracite

Spock 2 NEW

Designed by FLOS Outdoor



LED source included. Integrated electrical power supply 220-240V ON/OFF. Fixing bracket included. Equipped with a 1000 mm protruding section of neoprene cable and a kit with crimpable connectors and adhesive heat-shrinkable sleeves that guarantee the tightness of the connection. Optional IP68 connectors available. The metal nail for ground installation needs to be ordered separately. Optional accessories to regulate the light beam. Dimmable version available upon request.



Are you a professional and your project needs consulting and support?

[BOOK AN APPOINTMENT](#)

Main specifications

EAN	8054793693859
Mounting	Ground
Environments	Outdoor wet location
LED type	LED array
Power (W)	24
System power (W)	27
Source flux (lm)	3022
Lumen Output (lm)	2153

Physical

Colour	Anthracite
Orientation	Adjustable
Longitudinal tilting (°)	270
Net weight (kg)	1.8
Package height (mm)	235
Package width (mm)	185
Package length (mm)	180
Package volume (m3)	0.01
IP internal	66

Download

[Mounting instructions](#) ZIP

Photometric Files

[LDT / IES](#) ZIP

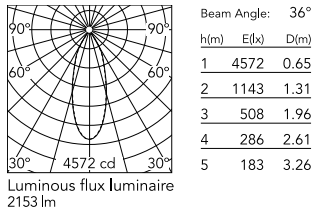
Technical Drawings

[2D](#) ZIP

[3D](#) ZIP



Schematic light drawing



Photometric

Light distribution	Symmetric
CCT (K)	2700
CRI>	80
Beam angle C0-180 (°)	40
Beam angle C90-270 (°)	40
Extreme cut off	No

Electrical

Insulation class	I
Frequency (Hz)	50/60
Main voltage (Vac)	220-240
Power supply	Integrated
Power supply type	Non Dimmable
Emergency	No

Ecodesign and Energy Labelling

This product contains a light source of energy efficiency class D



Notes

Please check with your referent person in our Front Office if a code modification is needed to meet the required certification compliance
Dimmable version on request

Accessories & Power Supply



OPTIONAL
Accessory

FA20930

Flood Diffuser Spock 2



OPTIONAL
Accessory

FA20630

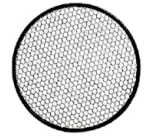
Visor Spock 2



OPTIONAL
Accessory

FA203

Kit Ground Spikes Spock 1/Spock
2/Spock 3



OPTIONAL
Accessory

FA21230

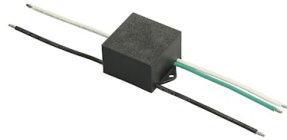
Anti-Glare Louvre Spock 2



OPTIONAL
Accessory

FA26230

Elliptical Lens Spock 2



OPTIONAL
Accessory

F990E00A000

S.P.D. (SURGE PROTECTION
DEVICE)



OPTIONAL
Accessory

F990C010000

3/4 way terminal block 4 poles
IP68 H2O stop. (ø5,5÷12mm
cable)



OPTIONAL
Accessory

F990C00A000

2 way terminal block 4 poles
IP68 H2O stop. (ø5,5÷12mm
cable)